

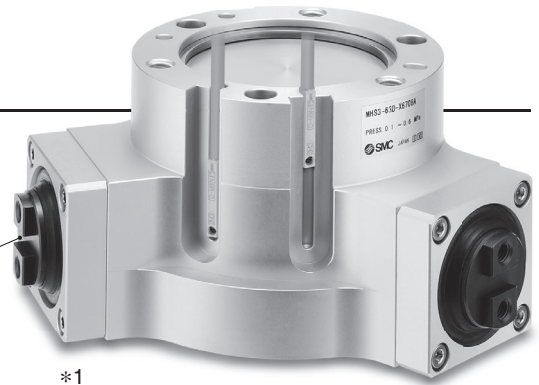
# Environmentally Resistant 3-Finger Air Gripper

RoHS

Ø 32, Ø 63

Applicable for environments  
with **water droplets** and **dust**

Moving part



**Durability 10 times or more** <sup>\*1</sup>

\*1 Compared with the standard model in environments with water splashing

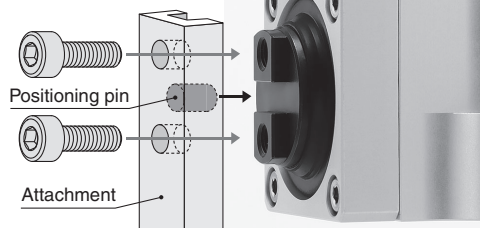
A variety of scrapers and Lube-retainers for various applications (environments) are available.

Water droplets		Dust	
In environments with water splashing	In dusty environments	In micro-powder (10 to 100 µm) environments	
<p><b>With water-resistant scraper + Lube-retainer</b></p> <p>* Applicable for environments in which coolant scatters in machine tools and water scatters in food machines, cleaning machines, etc. A grease film is formed on the finger by the Lube-retainer in order to improve durability.</p> <p>Water-resistant scraper Lube-retainer Finger</p> <p>For use in environments with coolant splashing</p>	<p><b>With heavy-duty scraper + Lube-retainer</b></p> <p>* Applicable for environments containing particles or foreign matter A grease film is formed on the finger by the Lube-retainer in order to improve durability.</p> <p>Heavy-duty scraper Lube-retainer Finger</p> <p>For machining equipment switching loaders</p>	<p><b>With double Lube-retainer</b></p> <p>* Prevents particles and foreign matter from entering the gripper The Lube-retainer ensures a consistent film of grease, improving gripper durability.</p> <p>Lube-retainer Finger</p> <p>For the transfer of containers filled with powder</p>	

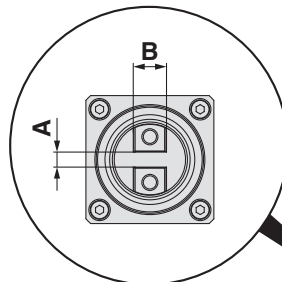
Improved attachment  
position reproducibility

Mounting example

Standardized positioning groove



\* The attachment, positioning pin, and bolts should be ordered separately by the customer.

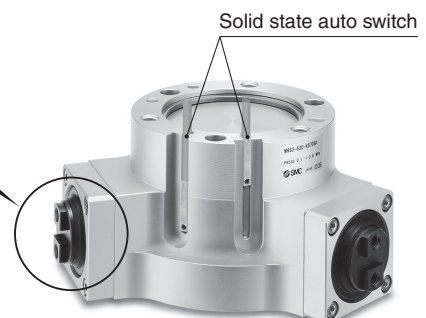


	A	B
Ø 32	2H9	8h9
Ø 63	6H9	12h9

\* Refer to pages 4 and 5 for details on the depth.

Solid state auto switches  
are mountable.

Applicable auto switch: D-M9□



**MHS3-X6708□**

**SMC**

19-EU727-UK

# MHS3-X6708□

## Model Selection

### Model Selection Example

#### Selection Procedure

**Step 1** Check the gripping force.

**Step 2** Check the gripping point.

#### Step 1 Check the gripping force.

Check the conditions.

Calculate the required gripping force.

Select the model from gripping force graph.

Example Workpiece mass: 0.4 kg

Gripping method:  
External gripping

Number of fingers: 3

Guidelines for the selection of the gripper with respect to workpiece mass

- Although differences will exist depending on the coefficient of friction between attachments and workpieces, select a model which will provide a gripping force as shown in the table below.
- \* Refer to the model selection illustration regarding multiples of the workpiece weight.

Model	Multiples of gripping force by workpiece weight
MHS3	7 to 13 times or more

- Further allowance should be provided when great acceleration or impact is expected during workpiece transfer.

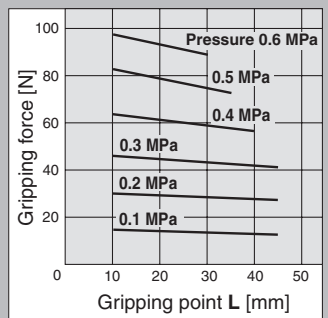
Example) For setting the gripping force to be at least 13 times greater than the workpiece weight:  
Required gripping force =  $0.4 \text{ kg} \times 13 \times 9.8 \text{ m/s}^2 \approx 50.9 \text{ N}$  or more

Gripping point: 20 mm

Operating pressure:  
0.4 MPa

#### MHS3-32D-X6708□

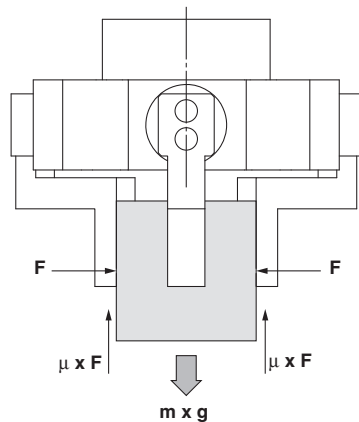
External Gripping Force



- When the MHS3-32D is selected  
A gripping force of 62 N is obtained from the intersection point of gripping point distance L = 20 mm and a pressure of 0.4 MPa.
- The gripping force is 15.5 times greater than the workpiece weight, and therefore satisfies a gripping force setting value of 13 times or more.

\* For **Step 2**, refer to the gripping point for the effective gripping force on page 2.

### Model Selection Illustration



When gripping a workpiece as in the figure to the left, and with the following definitions,

**3:** Number of fingers

**F:** Gripping force [N]

**μ:** Coefficient of friction between the attachments and the workpiece

**m:** Workpiece mass [kg]

**g:** Gravitational acceleration (9.8 m/s<sup>2</sup>)

**mg:** Workpiece weight [N]

the conditions under which the workpiece will not drop are

$$3 \times \mu F > mg$$

and therefore,

$$F > \frac{mg}{3 \times \mu}$$

With "a" as the safety margin, F is determined as follows:

$$F = \frac{a \times mg}{3 \times \mu}$$

### Multiples of Gripping Force by Workpiece Mass

**Number of fingers: When n = 3**

· SMC performs calculations allowing for impacts which occur during normal transfer, etc., using a safety margin of a = 4.

When $\mu = 0.2$	When $\mu = 0.1$
$F = \frac{mg}{3 \times 0.2} \times 4$ $= 10 \times mg$	$F = \frac{mg}{3 \times 0.1} \times 4$ $= 20 \times mg$

10 x Workpiece weight

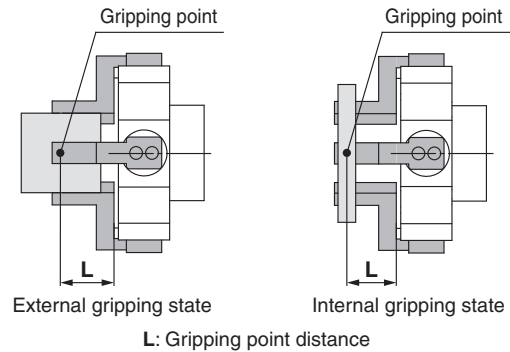
20 x Workpiece weight

\* · Even in cases where the coefficient of friction is greater than  $\mu = 0.2$ , for reasons of safety, select a gripping force which is at least 7 to 13 times greater than the workpiece weight, as recommended by SMC.

· If high acceleration, or impact forces are encountered during motion, a further margin should be considered.

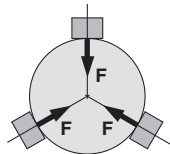
## Gripping Point

- The workpiece gripping point distance should be within the gripping force ranges given for each pressure in the effective gripping force graphs below.
- If operated with the workpiece gripping point beyond the indicated ranges, an excessive offset load will be applied to the sliding section of the fingers, which can have an adverse effect on the service life of the product.

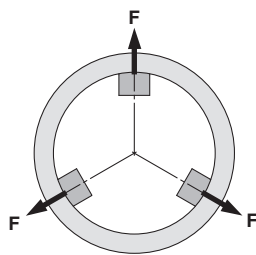


## Effective Gripping Force

- Indication of effective gripping force  
The effective gripping force shown in the graphs to the right is expressed as  $F$ , which is the thrust of one finger when all 3 of the fingers and attachments are in full contact with the workpiece as shown in the figure below.



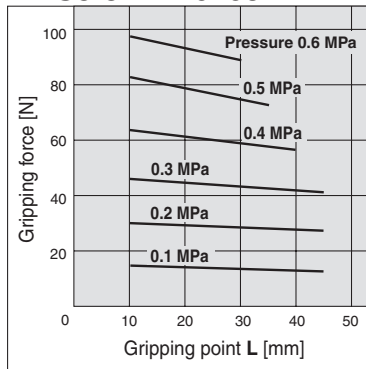
**External grip**



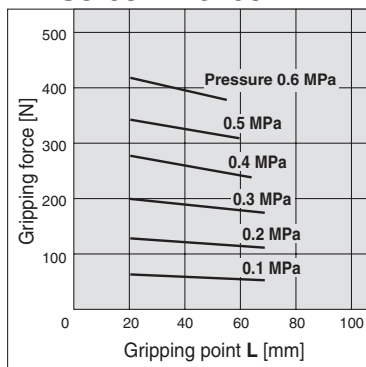
**Internal grip**

### External Gripping Force

#### MHS3-32 D-X6708

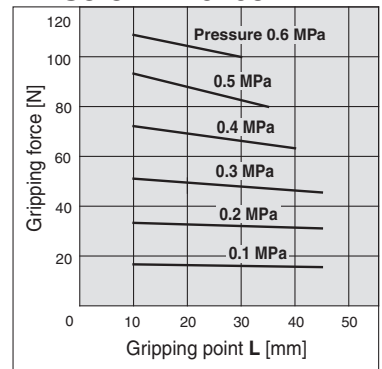


#### MHS3-63 D-X6708

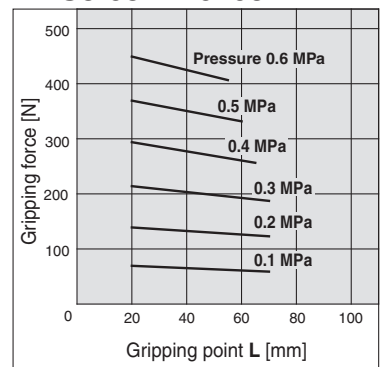


### Internal Gripping Force

#### MHS3-32 D-X6708



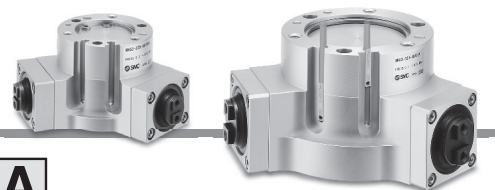
#### MHS3-63 D-X6708



# Environmentally Resistant 3-Finger Air Gripper

## MHS3-X6708

Ø 32, Ø 63



### How to Order

**MHS3-32 D-M9BA -X6708 A**

**Bore size**

32	32 mm
63	63 mm

**Auto switch**

—	Without auto switch (Built-in magnet)
---	---------------------------------------

\* For applicable auto switches, refer to the table below.

**Number of auto switches**

—	2
S	1

**Environmentally Resistant  
3-Finger Air Gripper**

### Specifications

<b>A: With heavy-duty scraper + Lube-retainer</b>	<b>B: With water-resistant scraper + Lube-retainer</b>
Heavy-duty scraper Lube-retainer	Water-resistant scraper Lube-retainer
<b>C: With double Lube-retainer</b>	
Lube-retainer	

### Applicable Auto Switches / Refer to the Web Catalogue for further information on auto switches.

Applicable Auto Switches																	
Notes: Refer to the Web Catalogue for further information on auto switches.																	
Type	Special function	Electrical entry	Indicator light	Wiring (Output)	Load voltage		Auto switch model		Lead wire length [m]*2					Pre-wired connector	Applicable load		
					DC	AC	Perpendicular	In-line	0.5 (—)	1 (M)	3 (L)	5 (Z)					
Solid state auto switch	—	Grommet	Yes	3-wire (NPN)	24 V	5 V,	—	M9NV	M9N	●	●	●	○	○	IC circuit	Relay, PLC	
				12 V		M9PV		M9P	●	●	●	○	○				
				12 V		M9BV		M9B	●	●	●	○	○	—			
	Diagnostic indication (2-colour indicator)			3-wire (NPN)		5 V,		M9NWV	M9NW	●	●	●	○	○	IC circuit		
				3-wire (PNP)		12 V		M9PWV	M9PW	●	●	●	○	○			
				2-wire		12 V		M9BWV	M9BW	●	●	●	○	○			—
	Water resistant (2-colour indicator)			3-wire (NPN)		5 V,		M9NAV*1	M9NA*1	○	○	●	○	○	IC circuit		
				3-wire (PNP)		12 V		M9PAV*1	M9PA*1	○	○	●	○	○			
				2-wire		12 V		M9BAV*1	M9BA*1	○	○	●	○	○			—

\*1 Water-resistant type auto switches can be mounted on the above models, but SMC cannot guarantee water resistance.

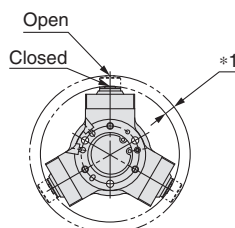
\*2 Lead wire length symbols: 0.5 m..... — (Example) M9NW 3 m..... L (Example) M9NWL 1 m..... M (Example) M9NWM 5 m..... Z (Example) M9NWX

\* Solid state auto switches marked with "○" are produced upon receipt of order.

\* When using the 2-colour indicator type, please set it so that the indicator lights up red to ensure air gripper detection at the proper position.

### Specifications

Model		MHS-32D-X6708□	MHS-63D-X6708□
Bore size		Ø 32	Ø 63
Fluid		Air	
Action		Double acting	
Operating pressure		0.2 to 0.6 MPa	
Ambient and fluid temperatures		-10 to 60 °C	
Repeatability		±0.01 mm	
Gripping force (0.5 MPa, L = 30 mm)	External gripping force	74 N	335 N
	Internal gripping force	82 N	359 N
Finger stroke*1		4 mm	8 mm
Seal material		NBR	
Max. operating frequency		60 c.p.m.	
Lubricant		Non-lube	
Weight		600 g	2,400 g



### Replacement Parts

#### Cover assembly part number

**MHS3-A -X6708**

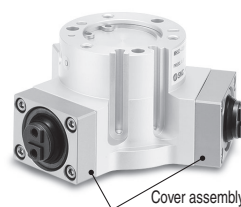
**Bore size**

32	32 mm
63	63 mm

### Specifications

<b>A</b>	With heavy-duty scraper + Lube-retainer
<b>B</b>	With water-resistant scraper + Lube-retainer
<b>C</b>	With double Lube-retainer

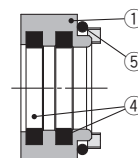
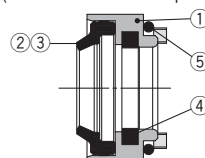
No.	Description	X6708 A	X6708 B	X6708 C
1	Finger cover	●	●	●
2	Heavy-duty scraper	●	—	—
3	Water-resistant scraper	—	●	—
4	Lube-retainer	●	●	●
5	O-ring	●	●	●
6	Hexagon socket head cap screw*1	●	●	●



\*1 Hexagon socket head cap screws for mounting (4 pcs.) are shipped together with the product.  
\* For the cover assembly, order 3 pieces per unit.

**X6708A** (With heavy-duty scraper + Lube-retainer)  
**X6708B** (With water-resistant scraper + Lube-retainer)

**X6708C**  
(With double Lube-retainer)

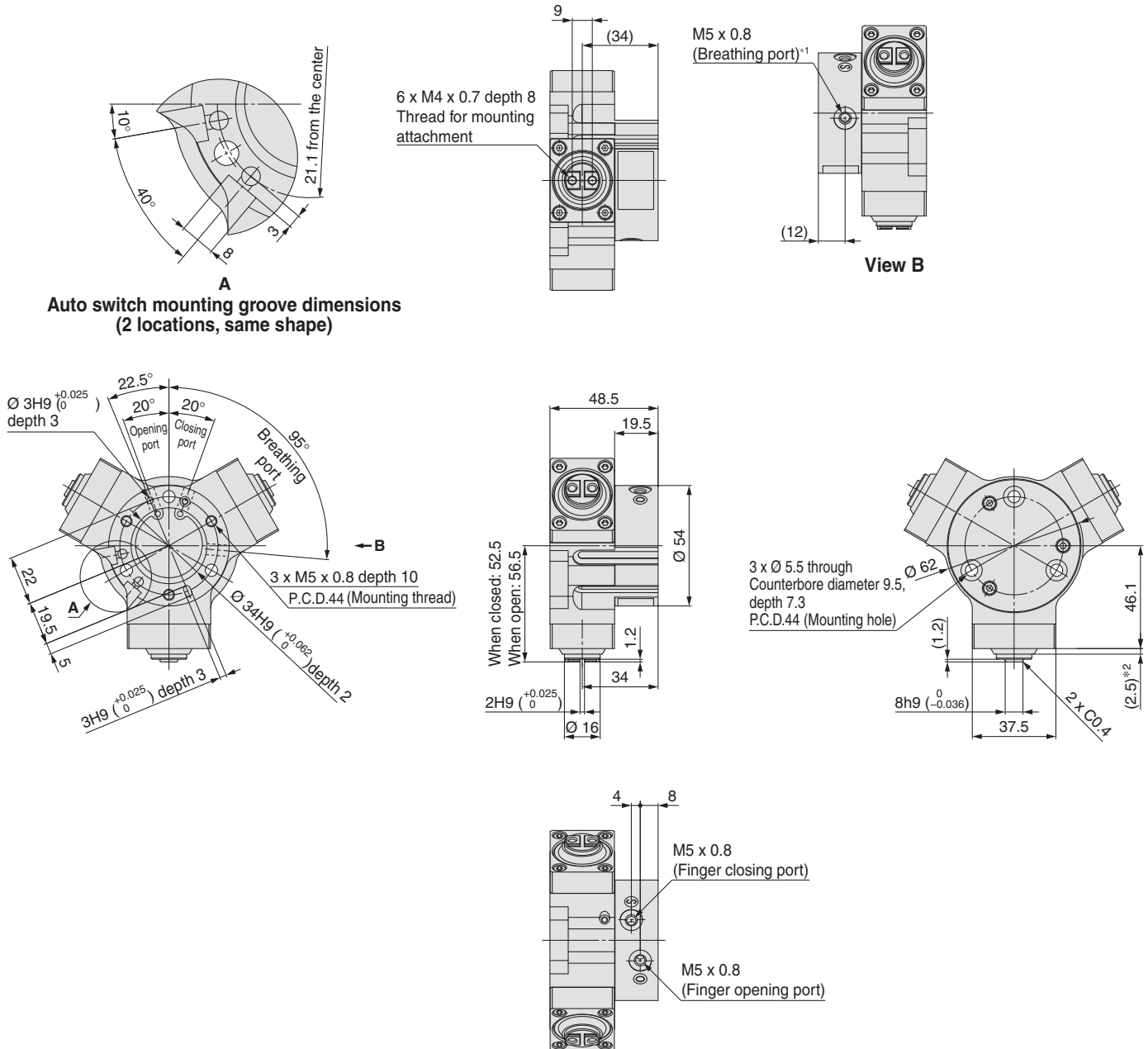




## Dimensions

### MHS3-32D-X6708

(The dimensions of the model with a heavy-duty scraper + Lube-retainer, the model with a water-resistant scraper + Lube-retainer, and the model with a double Lube-retainer are the same.)



\*1 Connect piping to the breathing port so that the dust, water, etc., in the surrounding atmosphere does not get into the product, and open the port to a safe place.

\*2 Only applies to the model with a heavy-duty scraper or water-resistant scraper

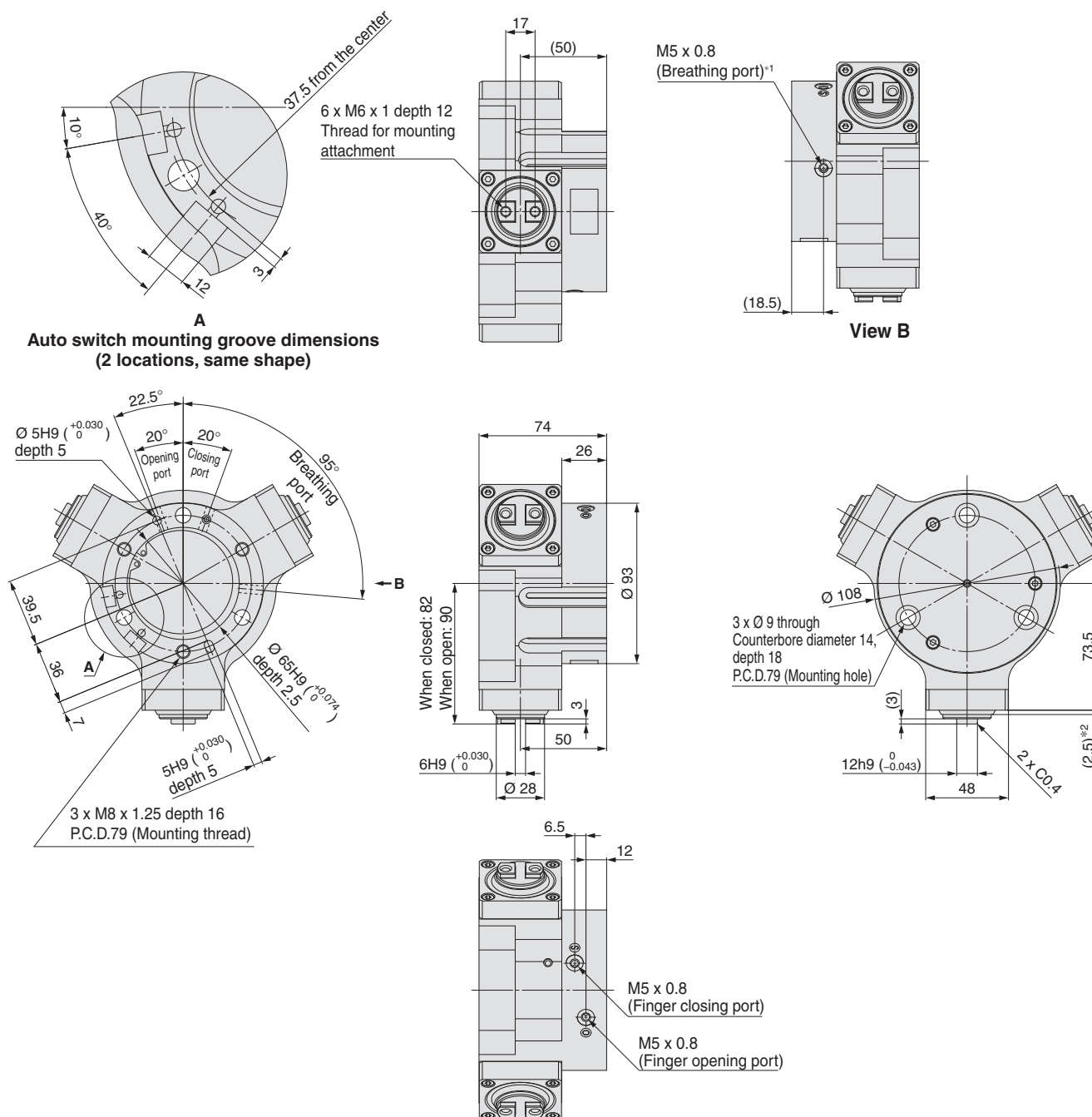
# MHS3-X6708□



## Dimensions

### MHS3-63D-X6708□

(The dimensions of the model with a heavy-duty scraper + Lube-retainer, the model with a water-resistant scraper + Lube-retainer, and the model with a double Lube-retainer are the same.)

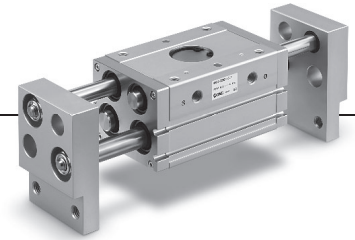


\*1 Connect piping to the breathing port so that the dust, water, etc., in the surrounding atmosphere does not get into the product, and open the port to a safe place.

\*2 Only applies to the model with a heavy-duty scraper or water-resistant scraper

# MHS3-X6708□

## Related Products

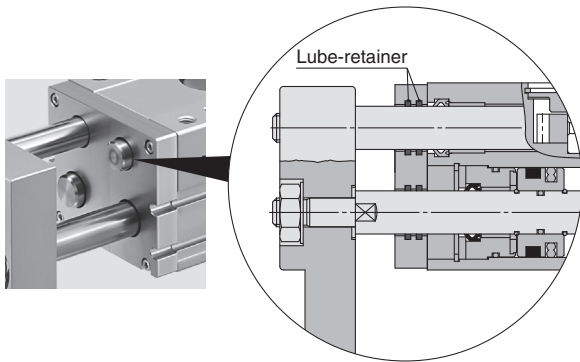


### Wide Type Parallel Style Air Gripper/MHL2-X85/-X86

Ø 10, Ø 16, Ø 20, Ø 25, Ø 32, Ø 40

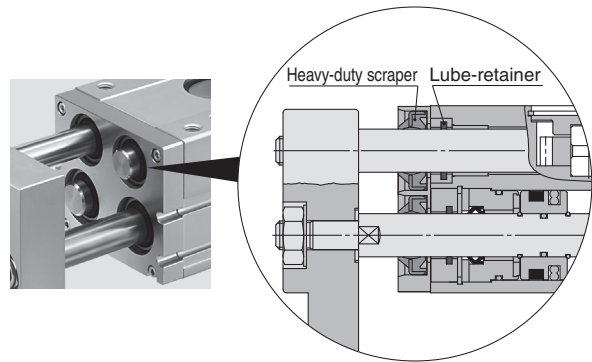
- In micro-powder (10 to 100 µm) environments  
With double Lube-retainer (-X85)

- \* Prevents particles and foreign matter from entering the gripper  
The Lube-retainer ensures a consistent film of grease, improving gripper durability.



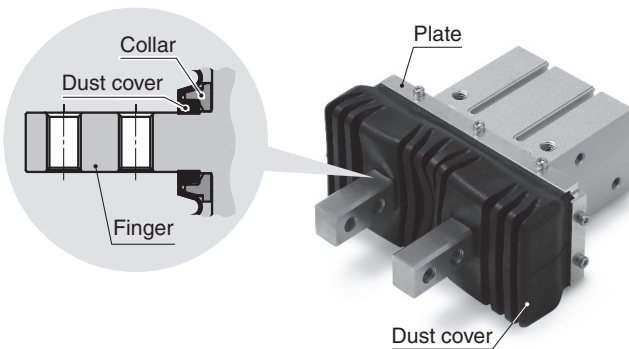
- In dusty environments  
With heavy-duty scraper + Lube-retainer (-X86□)

- \* Applicable for environments containing particles or foreign matter  
A grease film is formed on the rod by the Lube-retainer in order to improve durability.
- \* Seal material can be NBR or fluororubber.



### Coolant-resistant Air Gripper/MHZJ2-32D-X6544

Ø 32



- Increased resistance to splashing coolant
- Finger portion with collar protected by dust cover prevents contamination.
- Dust cover and plate connection prevent contamination.



#### SMC Corporation (Europe)

<b>Austria</b>	+43 (0)2262622800	www.smc.at	office@smc.at
<b>Belgium</b>	+32 (0)33551464	www.smc.be	info@smc.be
<b>Bulgaria</b>	+359 (0)2807670	www.smc.bg	office@smc.bg
<b>Croatia</b>	+385 (0)13707288	www.smc.hr	office@smc.hr
<b>Czech Republic</b>	+420 541424611	www.smc.cz	office@smc.cz
<b>Denmark</b>	+45 70252900	www.smc.dk.com	smc@smcdk.com
<b>Estonia</b>	+372 6510370	www.smc.pneumatics.ee	info@smcee.ee
<b>Finland</b>	+358 207513513	www.smc.fi	smcfi@smc.fi
<b>France</b>	+33 (0)164761000	www.smc-france.fr	info@smc-france.fr
<b>Germany</b>	+49 (0)61034020	www.smc.de	info@smc.de
<b>Greece</b>	+30 210 2717265	www.smc.hellas.gr	sales@smchellas.gr
<b>Hungary</b>	+36 23513000	www.smc.hu	office@smc.hu
<b>Ireland</b>	+353 (0)14039000	www.smcautomation.ie	sales@smcautomation.ie
<b>Italy</b>	+39 03990691	www.smcitalia.it	mailbox@smcitalia.it
<b>Latvia</b>	+371 67817700	www.smc.lv	info@smc.lv

<b>Lithuania</b>	+370 5 2308118	www.smc.lt	info@smclt.lt
<b>Netherlands</b>	+31 (0)205318888	www.smc.nl	info@smc.nl
<b>Norway</b>	+47 67129020	www.smc-norge.no	post@smc-norge.no
<b>Poland</b>	+48 222119600	www.smc.pl	office@smc.pl
<b>Portugal</b>	+351 214724500	www.smc.eu	apoioclientept@smc.smces.es
<b>Romania</b>	+40 213205111	www.smcromania.ro	smcromania@smcromania.ro
<b>Russia</b>	+7 8123036600	www.smc.eu	sales@smcru.com
<b>Slovakia</b>	+421 (0)413213212	www.smc.sk	office@smc.sk
<b>Slovenia</b>	+386 (0)73885412	www.smc.si	office@smc.si
<b>Spain</b>	+34 945184100	www.smc.eu	post@smc.smces.es
<b>Sweden</b>	+46 (0)86031200	www.smc.nu	smc@smc.nu
<b>Switzerland</b>	+41 (0)523963131	www.smc.ch	helpcenter@smc.ch
<b>Turkey</b>	+90 212 489 0 440	www.smc.pneumatik.com.tr	info@smcpneumatik.com.tr
<b>UK</b>	+44 (0)845 121 5122	www.smc.uk	sales@smc.uk