

Air Cylinder

Ø 32, Ø 40, Ø 50, Ø 63, Ø 80, Ø 100, Ø 125

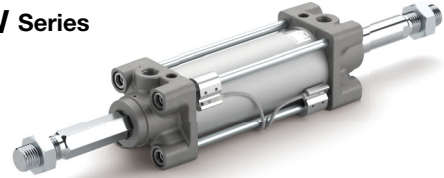
RoHS

New

Non-rotating Rod Type, Single Rod
MB2K Series



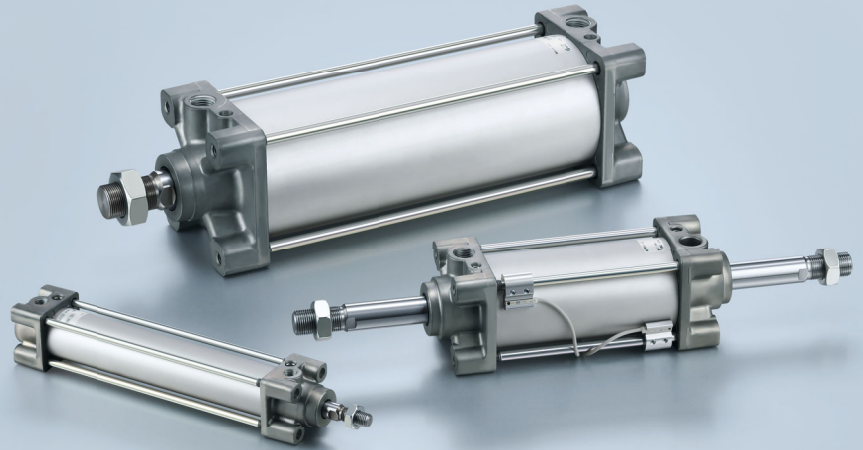
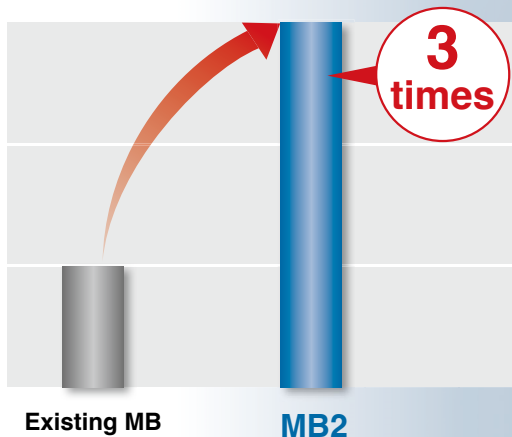
Non-rotating Rod Type, Double Rod
MB2KW Series



Adopts an air cushion + rubber bumper structure

* Based on SMC's test conditions

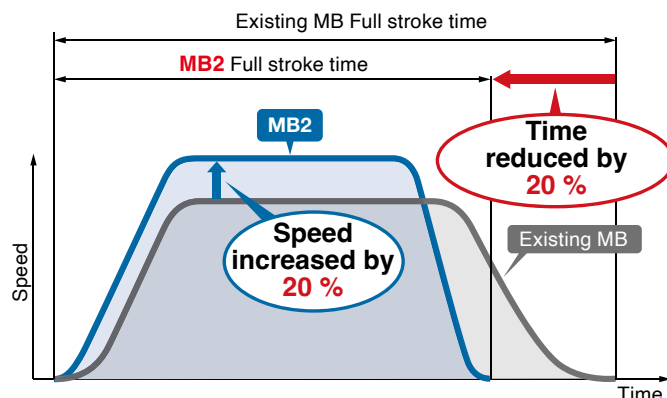
3 times better durability



Allowable kinetic energy: Max. 1.5 times

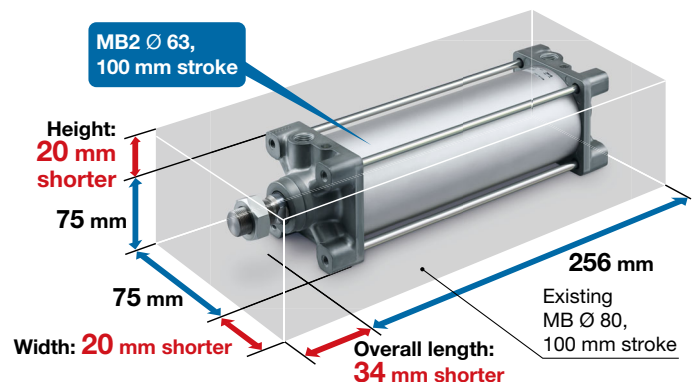
Full stroke time reduced by 20 %

Piston speed increased by 20 %



Downsizing

- It is possible to go down 1 cylinder bore size while maintaining the same allowable kinetic energy.
 - Contributes to the downsizing of equipment
 - CO₂ emissions (Air consumption) reduced by 38 %
- * The figure shows bore size 80 downsized to bore size 63.



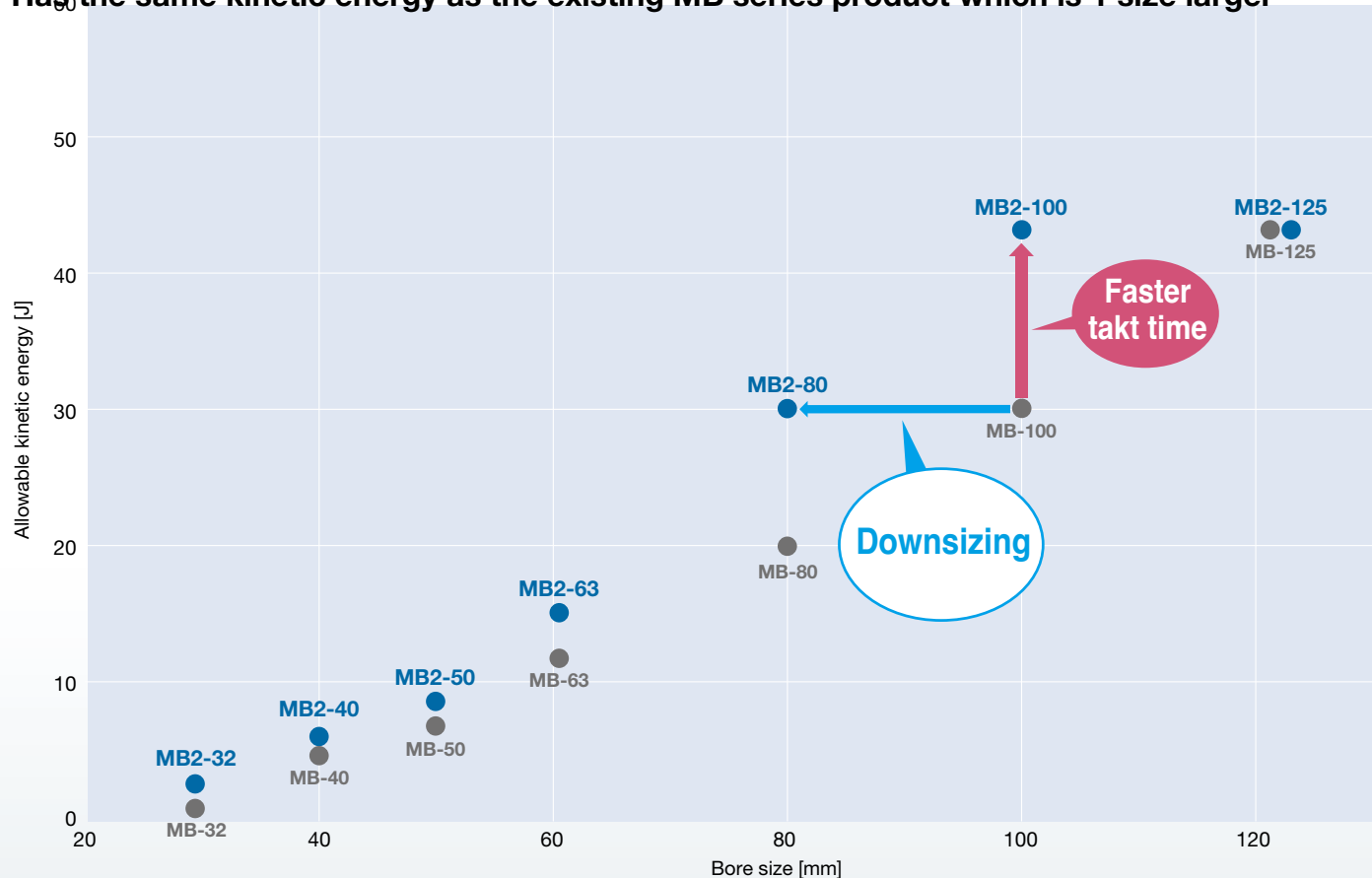
MB2 Series



CAT.EUS20-297B-UK

Allowable kinetic energy: Max 1.5 times

Has the same kinetic energy as the existing MB series product which is 1 size larger



Allowable Kinetic Energy Unit: J

Bore size [mm]	Existing MB	MB2
32	2.2	3.3
40	3.4	5.1
50	5.9	8.9
63	11.0	16.5
80	20.0	30.0
100	29.0	43.5
125	45.0	45.0

Example 75 kg is transferred horizontally with a piston speed of 800 mm/s → kinetic energy = 24 J

Existing MB

While the output and load factor are sufficient with bore size Ø 80/supply pressure 0.5 MPa, bore size Ø 100 is selected as the max. allowable kinetic energy is only 20.0 J for bore size Ø 80.

MB2

The allowable kinetic energy is 30.0 J, so bore size Ø 80 can be selected.

→ Increased energy saving is possible due to downsizing.

CO₂ emissions (Air consumption) can be reduced by up to 39 %.

CO₂ emissions (Air consumption) can be reduced due to downsizing. (Air consumption for one cycle) [L]

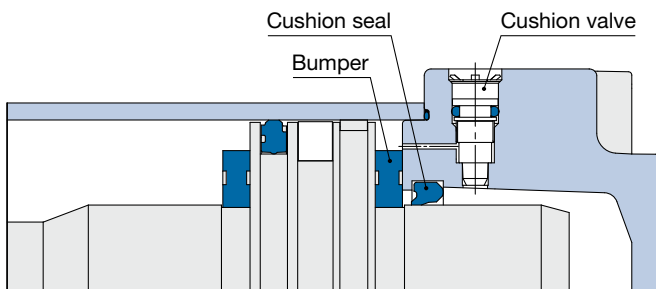
Bore size [mm]	Ø 32	Ø 40	Ø 50	Ø 63	Ø 80	Ø 100	Ø 125
Air consumption [L]	1.3	2.1	3.3	5.3	8.6	13.5	21.4

* At 0.5 MPa supply pressure and 150 mm stroke



Reduces cushion stroke time

The air cushion + rubber bumper combined structure allows for improved cushioning performance.



Reduces the metal noise that occurs when the piston stops

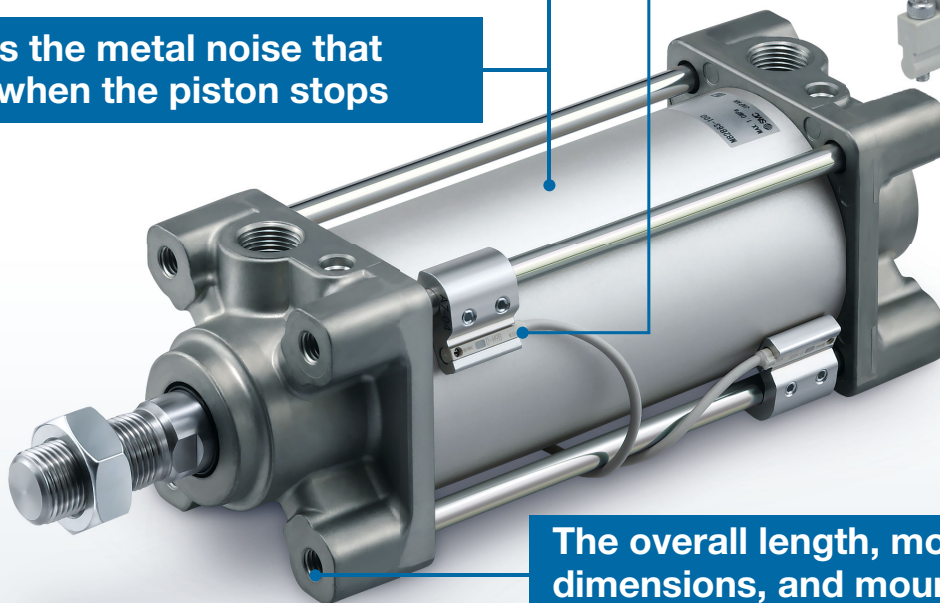
Various switches such as small auto switches and magnetic field-resistant auto switches can be mounted.

Small auto switches

- D-M9□
- D-A9□

Magnetic field-resistant auto switches

- D-P3DWA
- D-P4DW



The overall length, mounting dimensions, and mounting brackets are interchangeable with the existing MB series product.

Part numbers for products with a rod end bracket and/or a pivot bracket are available.

Time saving is possible as the cylinder and brackets do not need to be ordered separately.

* Rod end brackets and pivot brackets are shipped together with the product but do not come assembled.

Example) **MDB2** **D** 40-100- **N** **V** -M9BW

● Mounting

Pivot bracket

—	No bracket
N	Pivot bracket included

* Applicable only to D (Double clevis) and T (Trunnion) mounting types

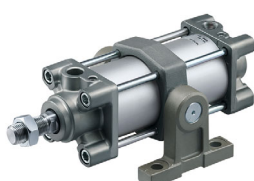
Rod end bracket

—	No bracket
V	Single knuckle joint
W	Double knuckle joint
Q	Rod end

Double clevis



Trunnion



With rod end bracket

V: Single knuckle joint



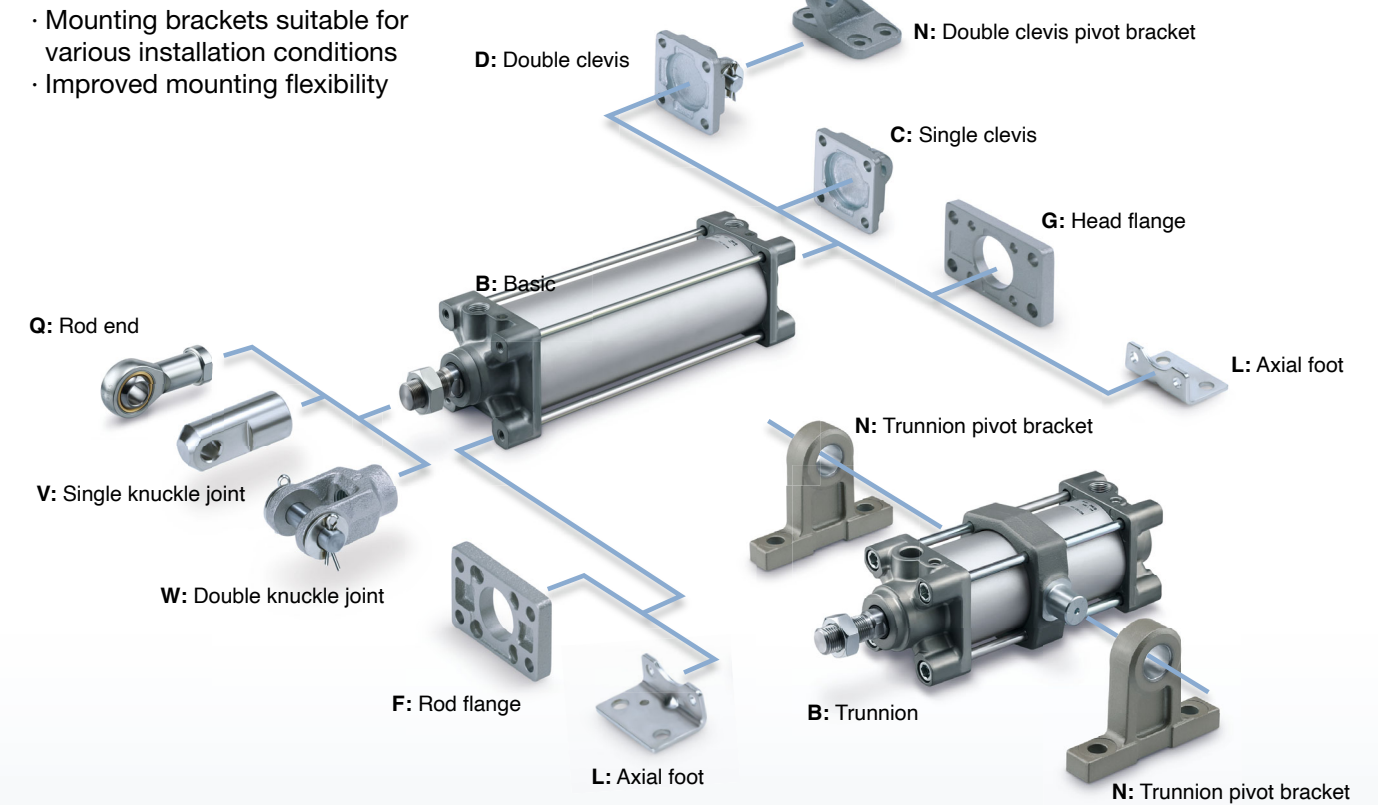
W: Double knuckle joint



Q: Rod end



Various mounting bracket options



Series Variations

Series	Type	Cushion	Bore size [mm]							Rod boot	Page
			32	40	50	63	80	100	125		
Standard Single rod MB2 Series	Double acting, Single rod	Air cushion + Rubber bumper	●	●	●	●	●	●	●	●	4
Standard Double rod MB2W Series			●	●	●	●	●	●	●	●	14
New Non-rotating rod Single rod MB2K Series	Double acting, Single rod	Air cushion + Rubber bumper	●	●	●	●	●	●	●	●	20
New Non-rotating rod Double rod MB2KW Series	Double acting, Double rod	Air cushion + Rubber bumper	●	●	●	●	●	●	●	●	25

CONTENTS

Standard Type: Double Acting, Single Rod **MB2 Series**

How to Order	p. 4
Specifications	p. 5
Replacement Parts	p. 7
Dimensions	p. 8
Rod End Bracket Dimensions	p. 12
Standard Type: Double Acting, Double Rod MB2W Series	
How to Order	p. 14
Specifications	p. 15
Replacement Parts	p. 17
Dimensions	p. 18

Non-rotating Rod Type: Double Acting, Single Rod **MB2K Series**

How to Order	p. 20
Specifications	p. 21
Replacement Parts	p. 23
Dimensions	p. 24
Non-rotating Rod Type: Double Acting, Double Rod MB2KW Series	
How to Order	p. 25
Specifications	p. 26
Replacement Parts	p. 28
Dimensions	p. 29

Auto Switch Mounting	p. 30
Safety Instructions	Back cover

Ø 32, Ø 40, Ø 50, Ø 63, Ø 80, Ø 100, Ø 125

Ø 32, Ø 40, Ø 50, Ø 63, Ø 80, Ø 100, Ø 125

With auto switch **MB2** **B** **32** **—** **50** **—** **—** **—** **—** **M9BW** **—**

Mounting

B	Basic
L	Axial foot
F	Rod flange
G	Head flange
C	Single clevis
D	Double clevis
T	Trunnion

* The trunnion type is mounted before shipment.
* Other mounting brackets are shipped together with the product.

Bore size

32	32 mm
40	40 mm
50	50 mm
63	63 mm
80	80 mm
100	100 mm
125	125 mm

Port thread type

—	Rc
TN	NPT
TF	G

Pivot bracket

—	No bracket
N	Pivot bracket

* Only for D and T mounting types
* The bracket is shipped together with the product.
* For details, refer to page 11.

Auto switch

—	Without auto switch
----------	---------------------

* For applicable auto switches, refer to the table below.

Number of auto switches

—	2
S	1
3	3
n	n

Rod end bracket

—	No bracket (Rod end nut provided as standard)
V	Single knuckle joint
W	Double knuckle joint
Q	Rod end

* A knuckle joint pin is not provided with the single knuckle joint.
* The bracket is shipped together with the product.
* For details, refer to page 12.

Suffix (Rod boot)

—	None
J	Nylon tarpaulin
K	Heat-resistant tarpaulin

* For details, refer to page 6.

Cylinder stroke [mm]

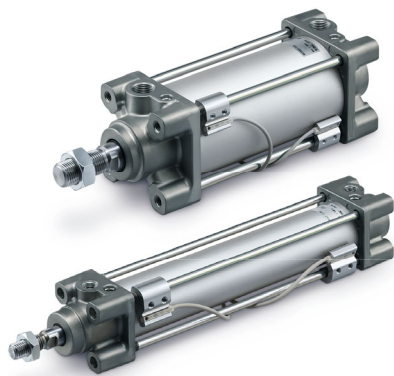
Refer to page 5 for standard strokes.

*** For the ordering example of cylinder assembly, refer to page 5.**

Type	Special function	Electrical entry	Indicator light	Wiring (Output)	Load voltage		Auto switch model		Lead wire length [m]					Pre-wired connector	Applicable load				
					DC		AC		0.5 (—)	1 (M)	3 (L)	5 (Z)	None (N)						
Solid state auto switch	— — —	Grommet	Yes	3-wire (NPN)	24 V	5 V,	—	M9NV	M9N	●	●	●	○	—	○	IC circuit			
				3-wire (PNP)		12 V		M9PV	M9P	●	●	●	○	—	○				
				2-wire		12 V		M9BV	M9B	●	●	●	○	—	○	—			
	Diagnostic indication (2-colour indicator)	Grommet		3-wire (NPN)		5 V,		M9NWW	M9NW	●	●	●	○	—	○	IC circuit			
				3-wire (PNP)		12 V		M9PWW	M9PW	●	●	●	○	—	○				
				2-wire		12 V		M9BWW	M9BW	●	●	●	○	—	○	—			
	Water resistant (2-colour indicator)			3-wire (NPN)		5 V,		M9NAV*1	M9NA*1	○	○	●	○	—	○	IC circuit			
				3-wire (PNP)		12 V		M9PAV*1	M9PA*1	○	○	●	○	—	○				
				2-wire		12 V		M9BAV*1	M9BA*1	○	○	●	○	—	○	—			
Reed auto switch	— — —	Grommet	Yes	3-wire (NPN equivalent)	—	5 V	—	A96V	A96	●	●	●	●	—	○	IC circuit			
			No	2-wire	24 V	12 V	100 V	A93V	A93	●	●	●	●	—	○*2	—			
							100 V or less	A90V	A90	●	●	●	●	—	○*2	IC circuit			

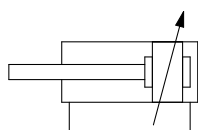
- * There are applicable auto switches other than those listed above. For details, refer to page 32.

MB2 Series



Symbol

Double acting type



Specifications

Bore size [mm]	32	40	50	63	80	100	125
Action	Double acting, Single rod						
Fluid	Air						
Proof pressure	1.5 MPa						
Max. operating pressure	1.0 MPa						
Min. operating pressure	0.05 MPa						
Ambient and fluid temperatures	Without auto switch: -10 to 70 °C With auto switch: -10 to 60 °C (No freezing)						
Lubrication	Not required (Non-lube)						
Piston speed	50 to 1000 mm/s						
Stroke length tolerance	Up to 500: $^{+2.0}_0$, 501 to 1000: $^{+2.4}_0$, 1001 to 1500: $^{+2.8}_0$, 1501 to 2000: $^{+3.2}_0$, 2001 to 2500: $^{+3.6}_0$, 2501 to 2700: $^{+4.0}_0$						
Cushion	Air cushion + Rubber bumper						
Mounting	Basic, Axial foot, Rod flange, Head flange, Single clevis, Double clevis, Trunnion						

* Stroke length tolerance does not include the amount of bumper change. There will be 0.1 to 1.0 mm of bumper distortion depending on the supply pressure.

Strokes

Air Cushion Stroke

Bore size [mm]	Effective cushion length [mm]
32	17
40	17
50	17
63	17
80	26
100	26
125	26



Made to Order

Symbol	Specifications
-XA□	Change of rod end shape
-XC14	Change of trunnion bracket mounting position

Refer to pages 30 to 36 for cylinders with auto switches.

- Auto Switch Proper Mounting Position (Detection at stroke end) and Mounting Height
- Minimum Stroke for Auto Switch Mounting
- Auto Switch Mounting Brackets/Part Nos.
- Operating Range

Bore size [mm]	Standard stroke		Max. manufacturable stroke
	Stroke range ①	Stroke range ②	
32	50, 75, 100, 125, 150, 175, 200, 250, 300, 350, 400, 450, 500	Up to 1000	1000
40	50, 75, 100, 125, 150, 175, 200, 250, 300, 350, 400, 450, 500	Up to 1800	2700
50	50, 75, 100, 125, 150, 175, 200, 250, 300, 350, 400, 450, 500, 600		
63	50, 75, 100, 125, 150, 175, 200, 250, 300, 350, 400, 450, 500, 600		
80	50, 75, 100, 125, 150, 175, 200, 250, 300, 350, 400, 450, 500, 600, 700, 800		
100	50, 75, 100, 125, 150, 175, 200, 250, 300, 350, 400, 450, 500, 600, 700, 800		
125	50, 75, 100, 125, 150, 175, 200, 250, 300, 350, 400, 450, 500, 600, 700, 800, 900, 1000	Up to 2000	

* Applicable strokes should be confirmed according to the usage. For details, refer to the "Air Cylinders Model Selection" in the catalogue on www.smc.eu. In addition, products that exceed the stroke range ① might not be able to fulfill the specifications due to deflection, etc.

* The manufacturing of intermediate strokes is possible. (Spacers are not used.)

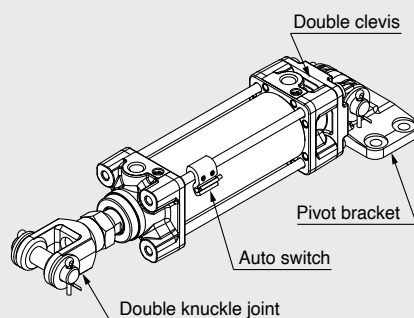
* Strokes exceeding the stroke range ② are available as a special order.

* When using a rod boot, a stroke range of up to 1000 mm is available. Strokes over 1000 mm are available as a special order.

* Using a stroke of a length which is smaller than the effective cushion length may result in reduced air cushion performance.

Ordering Example of Cylinder Assembly

Cylinder model: MDB2D32-50-NW-M9BW



Mounting D: Double clevis
Pivot bracket N: Yes
Rod end bracket W: Double knuckle joint
Auto switch D-M9BW: 2 pcs.

* Mounting brackets (excluding the trunnion), pivot brackets, rod end brackets (excluding the rod end nut), and auto switches are shipped together with the product.

Mounting Brackets/Order Nos.

Bore size [mm]	32	40	50	63	80	100	125
Axial foot*1	MB-L03	MB-L04	MB-L05	MB-L06	MB-L08	MB-L10	MB-L12
Flange	MB-F03	MB-F04	MB-F05	MB-F06	MB-F08	MB-F10	MB-F12
Single clevis	MB-C03	MB-C04	MB-C05	MB-C06	MB-C08	MB-C10	MB-C12
Double clevis	MB-D03	MB-D04	MB-D05	MB-D06	MB-D08	MB-D10	MB-D12

- *1 When ordering axial foot brackets, order 2 pieces per cylinder.
 * It is possible to order the mounting brackets separately. Refer to each bore size in the table above for part numbers.
 * Parts included with each type of mounting bracket are as follows.
 Axial foot, Flange, Single clevis: Body mounting bolt
 Double clevis: Body mounting bolt, Clevis pin, Flat washer (2 pcs.), Split pin (2 pcs.)
 → Refer to page 12.

Mounting Brackets, Accessories/Material, Surface Treatment

Segment	Description	Material	Surface treatment (Ø 32 to Ø 100)	Surface treatment (Ø 125)
Mounting brackets	Axial foot	Rolled steel	Zinc chromating	Metallic silver colour painting
	Flange	Cast iron	Metallic silver colour painting	Metallic silver colour painting
	Single clevis	Cast iron	Metallic silver colour painting after zinc plating	Metallic silver colour painting
	Double clevis	Cast iron	Metallic silver colour painting after zinc plating	Metallic silver colour painting
	Trunnion	Cast iron	Metallic silver colour painting after zinc chromating	Metallic silver colour painting
Accessories	Double clevis pivot bracket	Cast iron	Metallic silver colour painting after zinc chromating	Metallic silver colour painting
	Trunnion pivot bracket	Cast iron	Metallic silver colour painting after zinc chromating	Metallic silver colour painting
	Single knuckle joint	Free-cutting steel	Zinc chromating	Electroless nickel plating
	Double knuckle joint	Cast iron	Metallic silver colour painting	Metallic silver colour painting
	Rod end	Carbon steel	Zinc plating	Zinc plating
	Knuckle joint pin	Carbon steel	—	—
	Clevis pin	Carbon steel	—	—
	Rod end nut	Rolled steel	Zinc chromating	Zinc chromating

* Refer to pages 11 and 12 for accessory dimensions.

Theoretical Output

(Unit: N) 

Bore size [mm]	Rod size [mm]	Operating direction	Piston area [mm ²]	Operating pressure [MPa]								
				0.2	0.3	0.4	0.5	0.6	0.7	0.8	0.9	1.0
32	12	OUT	804	161	241	322	402	482	563	643	724	804
		IN	691	138	207	276	346	415	484	553	622	691
40	16	OUT	1257	251	377	503	629	754	880	1006	1131	1257
		IN	1056	211	317	422	528	634	739	845	950	1056
50	20	OUT	1963	393	589	785	982	1178	1374	1570	1767	1963
		IN	1649	330	495	660	825	989	1154	1319	1484	1649
63	20	OUT	3117	623	935	1247	1559	1870	2182	2494	2805	3117
		IN	2803	561	841	1121	1402	1682	1962	2242	2523	2803
80	25	OUT	5027	1005	1508	2011	2514	3016	3519	4022	4524	5027
		IN	4536	907	1361	1814	2268	2722	3175	3629	4082	4536
100	30	OUT	7854	1571	2356	3142	3927	4712	5498	6283	7069	7854
		IN	7147	1429	2144	2859	3574	4288	5003	5718	6432	7147
125	32	OUT	12272	2454	3682	4909	6136	7363	8590	9818	11045	12272
		IN	11468	2294	3440	4588	5734	6881	8028	9174	10321	11468

* Theoretical output [N] = Pressure [MPa] x Piston area [mm²]

Weight

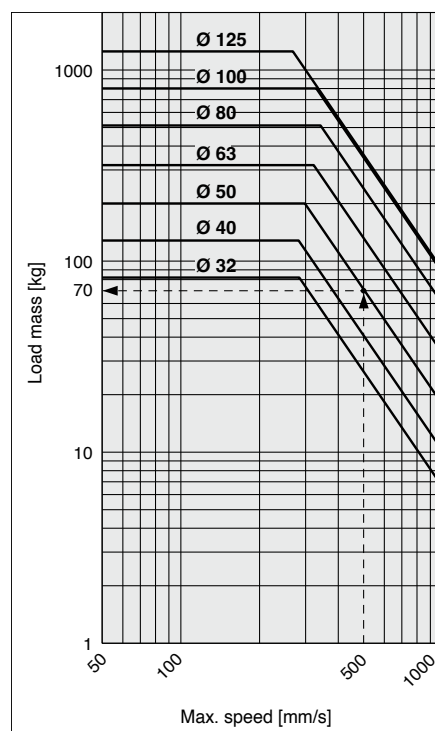
Bore size [mm]		32	40	50	63	80	100	125
Basic weight	Basic	0.42	0.57	0.97	1.13	2.19	3.11	5.09
	Axial foot	0.54	0.71	1.19	1.41	2.69	3.77	7.17
	Flange	0.71	0.94	1.42	1.92	3.64	4.94	9.25
	Single clevis	0.67	0.80	1.31	1.76	3.30	4.69	7.66
	Double clevis	0.68	0.84	1.40	1.92	3.59	4.96	7.86
	Trunnion	0.71	0.93	1.45	1.93	3.74	4.80	8.07
Additional weight per 50 mm of stroke		All mounting brackets	0.11	0.16	0.26	0.27	0.42	0.56
Additional weight for magnet		With auto switch (Built-in magnet)	0.01	0.01	0.01	0.02	0.02	0.03
Accessories	Clevis pivot bracket	0.19	0.19	0.41	0.41	1.13	1.13	2.37
	Trunnion pivot bracket (1 pc.)	0.09	0.21	0.21	0.4	0.4	0.82	1.68
	Single knuckle joint	0.15	0.23	0.26	0.26	0.6	0.83	1.08
	Double knuckle joint (with pin)	0.22	0.37	0.43	0.43	0.87	1.27	1.58
	Rod end	0.07	0.16	0.3	0.3	0.49	0.67	1.12

Rod Boot Material

Symbol	Material	Max. ambient temp.
J	Nylon tarpaulin	70 °C
K	Heat-resistant tarpaulin	110 °C*1

- *1 Max. ambient temperature for rod boot itself
 * The rod boot replacement part numbers are listed in the "Maintenance Parts List." Refer to the **catalogue on www.smc.eu**.

Allowable Kinetic Energy



Example) Load limit at the rod end when an air cylinder with a bore size of Ø 50 is actuated at 500 mm/s
 Extend upward from 500 mm/s on the horizontal axis of the graph to the intersection point with the line for a 50 mm bore size, and then extend leftward from this point to find the load of 70 kg.

Bore size [mm]	32	40	50	63	80	100	125
Allowable kinetic energy	3.3	5.1	8.9	16.5	30.0	43.5	45.0

Calculation example)

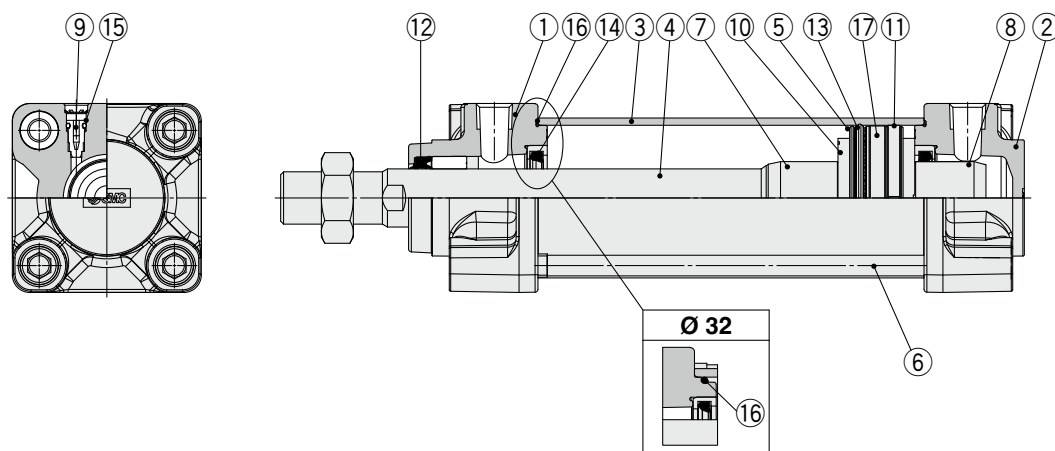
MB2B32-100 (Basic, Ø 32, 100 mm stroke)

- Basic weight 0.42 (Basic, Ø 32)
- Additional weight 0.11/50 mm stroke
- Cylinder stroke 100 mm stroke

$$0.42 + 0.11 \times 100/50 = \mathbf{0.64 \text{ kg}}$$

MB2 Series

Replacement Parts



Component Parts

No.	Description
1	Rod cover
2	Head cover
3	Cylinder tube
4	Piston rod
5	Piston
6	Tie-rod
7	Cushion ring A
8	Cushion ring B
9	Cushion valve
10	Bumper
11	Wear ring
12	Rod seal
13	Piston seal
14	Cushion seal
15	Cushion valve seal
16	Cylinder tube gasket
17	Magnet

Replacement Parts/Seal Kit

Bore size [mm]	Kit no.	Contents
32	MB2-32-PS	Set of the nos. ⑩ (2 pcs.), ⑪ (1 pc.), ⑫ (1 pc.), ⑬ (1 pc.), ⑭ (2 pcs.), ⑯ (2 pcs.)
40	MB2-40-PS	
50	MB2-50-PS	
63	MB2-63-PS	
80	MB2-80-PS	
100	MB2-100-PS	
125	MB2-125-PS	

* Seal kits can be ordered using the seal kit part number corresponding to each bore size.

* Trunnion type should not be disassembled.

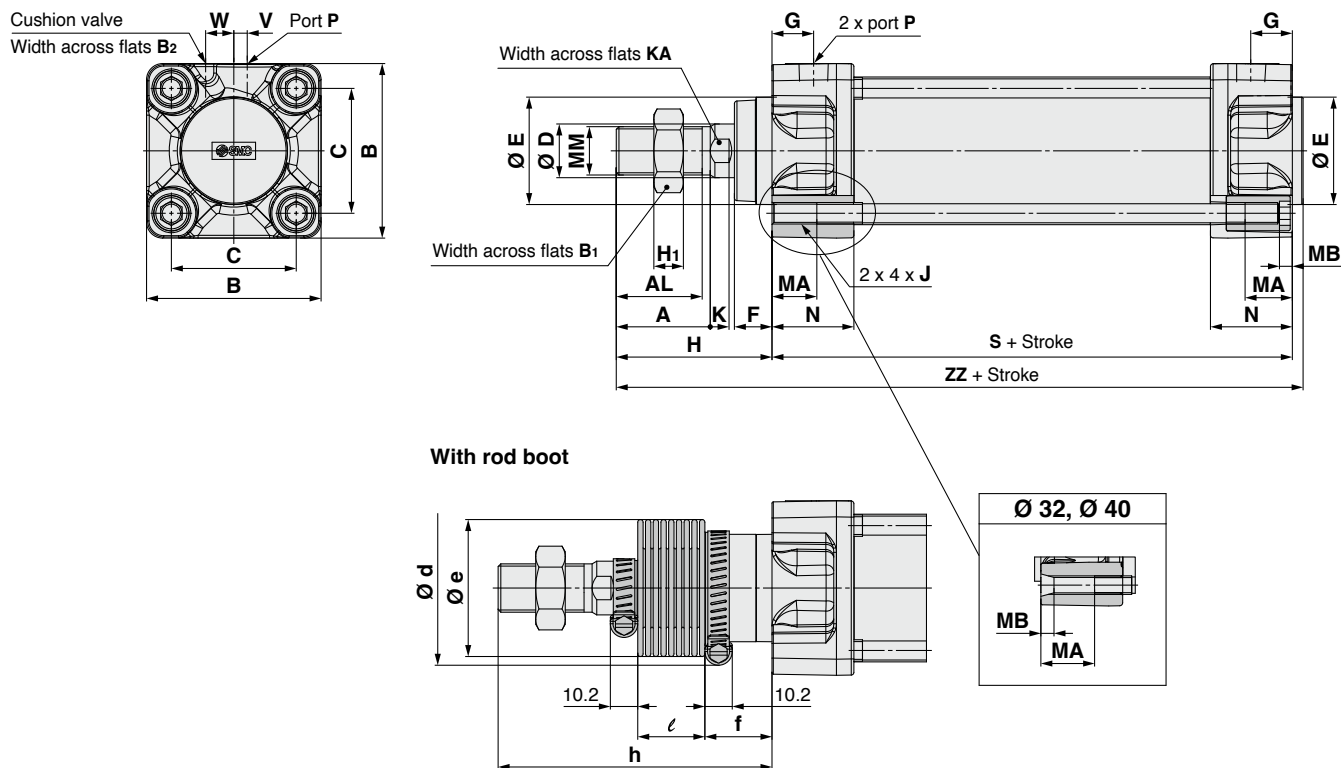
* The seal kit includes a grease pack (10 g for Ø 32 to Ø 50, 20 g for Ø 63 and Ø 80, 30 g for Ø 100 and Ø 125).
Order with the following part number when only the grease pack is needed.

Grease pack part number: GR-S-010 (10 g), GR-S-020 (20 g)

* Refer to the operation manual for seal replacement instructions.

Standard

Basic: (M□B2B)



Bore size [mm]	A	AL	B	B ₁	B ₂	C	D	E	F	G	H	H ₁	J	K	KA	MA	MB	MM	N	P	S	V	W	ZZ
32	22	19.5	46	17	2	32.5	12	30	13	13	47	6	M6 x 1	6	10	16	4	M10 x 1.25	27	1/8	84	4	7	135
40	30	27	52	22	2	38	16	35	13	14	51	8	M6 x 1	6	14	16	4	M14 x 1.5	27	1/4	84	4	10	139
50	35	32	65	27	2	46.5	20	40	14	15.5	58	11	M8 x 1.25	7	18	16	5	M18 x 1.5	31	1/4	94	5	10.5	156
63	35	32	75	27	2	56.5	20	45	14	16.5	58	11	M8 x 1.25	7	18	16	5	M18 x 1.5	31	3/8	94	9	12	156
80	40	37	95	32	3	72	25	45	20	19	72	13	M10 x 1.5	10	22	16	5	M22 x 1.5	38	3/8	114	11.5	12	190
100	40	37	114	41	3	89	30	55	20	19	72	16	M10 x 1.5	10	26	16	5	M26 x 1.5	38	1/2	114	17	13	190
125	54	50	136	41	4	110	32	60	27	19	97	16	M12 x 1.75	13	27	20	6	M27 x 2	38	1/2	120	17	15	223

With Rod Boot

Bore size [mm]	d	e	f	ℓ											
				1 to 50	51 to 100	101 to 150	151 to 200	201 to 300	301 to 400	401 to 500	501 to 600	601 to 700	701 to 800	801 to 900	901 to 1000
32	54	36	23	12.5	25	37.5	50	75	100	125	150	175	200	225	250
40	56	41	23	12.5	25	37.5	50	75	100	125	150	175	200	225	250
50	64	51	25	12.5	25	37.5	50	75	100	125	150	175	200	225	250
63	64	51	25	12.5	25	37.5	50	75	100	125	150	175	200	225	250
80	68	56	29	12.5	25	37.5	50	75	100	125	150	175	200	225	250
100	76	61	29	12.5	25	37.5	50	75	100	125	150	175	200	225	250
125	82	75	27	10	20	30	40	60	80	100	120	140	160	180	200

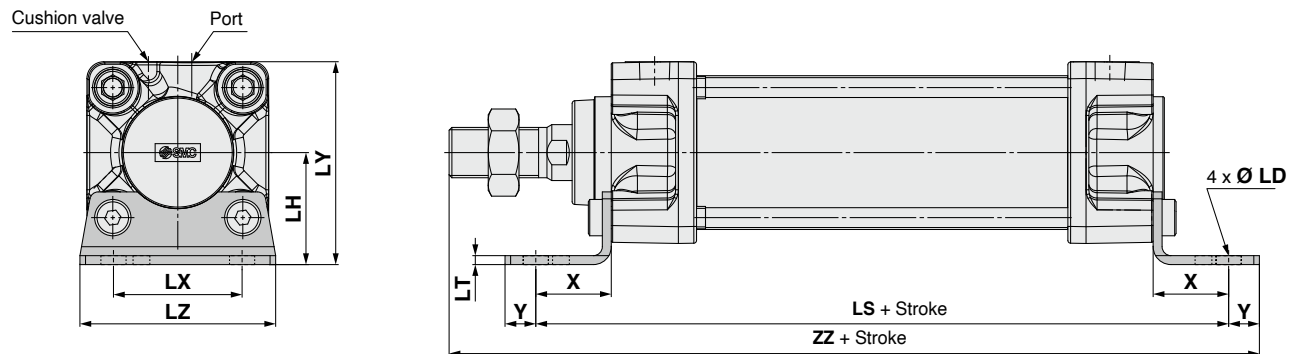
Bore size [mm]	h											
	1 to 50	51 to 100	101 to 150	151 to 200	201 to 300	301 to 400	401 to 500	501 to 600	601 to 700	701 to 800	801 to 900	901 to 1000
32	73	86	98	111	136	161	186	211	236	261	286	311
40	81	94	106	119	144	169	194	219	244	269	294	319
50	89	102	114	127	152	177	202	227	252	277	302	327
63	89	102	114	127	152	177	202	227	252	277	302	327
80	101	114	126	139	164	189	214	239	264	289	314	339
100	101	114	126	139	164	189	214	239	264	289	314	339
125	120	130	140	150	170	190	210	230	250	270	290	310

MB2 Series

Standard/With Mounting Bracket

* Refer to Basic (page 8) for other dimensions.

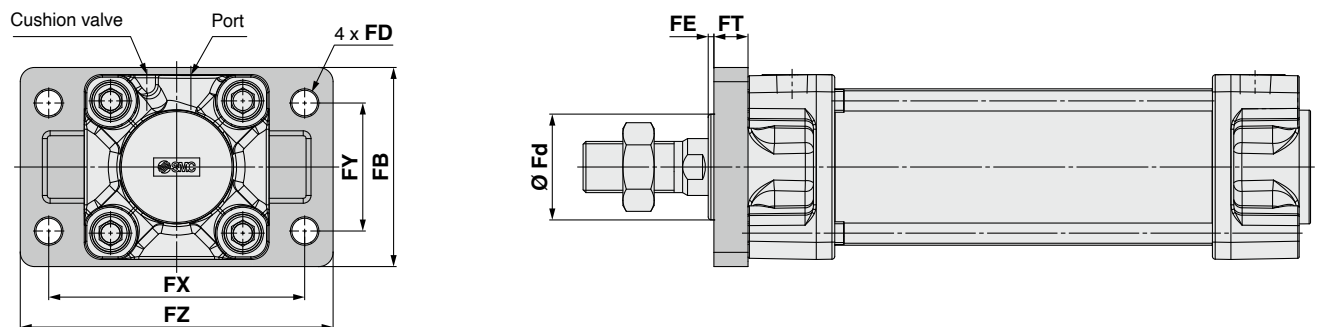
Axial foot: (M□DB2L)



Bore size [mm]	LD	LH	LS	LT	LX	LY	LZ	X	Y	ZZ
32	7	30	128	3.2	32	53	50	22	9	162
40	9	33	132	3.2	38	59	55	24	11	170
50	9	40	148	3.2	46	72.5	70	27	11	190
63	12	45	148	3.6	56	82.5	80	27	14	193

Bore size [mm]	LD	LH	LS	LT	LX	LY	LZ	X	Y	ZZ
80	12	55	174	4.5	72	102.5	100	30	14	230
100	14	65	178	4.5	89	122	120	32	16	234
125	14	81	210	8	90	149	136	45	20	282

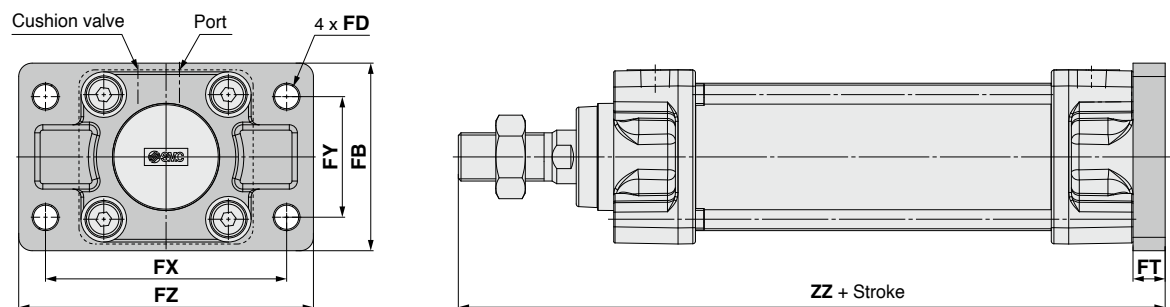
Rod flange: (M□DB2F)



Bore size [mm]	Fd	FB	FD	FE	FT	FX	FY	FZ
32	28	50	7	3	10	64	32	79
40	32	55	9	3	10	72	36	90
50	38	70	9	2	12	90	45	110
63	39	80	9	2	12	100	50	120

Bore size [mm]	Fd	FB	FD	FE	FT	FX	FY	FZ
80	44	100	12	4	16	126	63	153
100	52	120	14	4	16	150	75	178
125	57	138	14	7	20	180	102	216

Head flange: (M□DB2G)



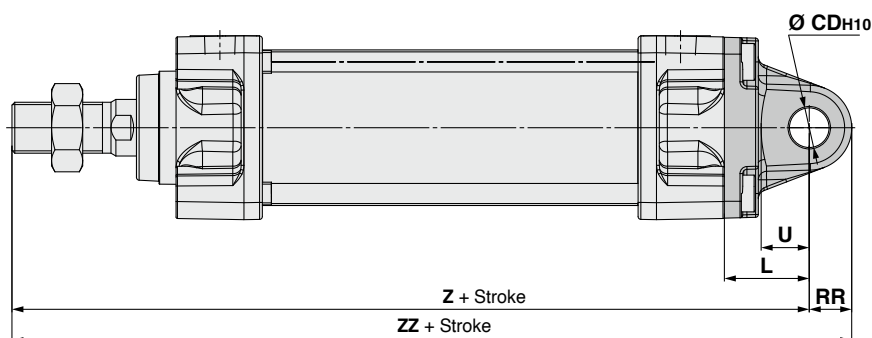
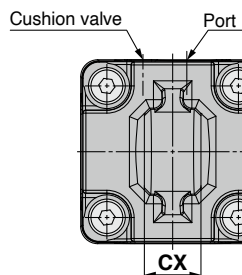
Bore size [mm]	FB	FD	FT	FX	FY	FZ	ZZ
32	50	7	10	64	32	79	141
40	55	9	10	72	36	90	145
50	70	9	12	90	45	110	164
63	80	9	12	100	50	120	164

Bore size [mm]	FB	FD	FT	FX	FY	FZ	ZZ
80	100	12	16	126	63	153	202
100	120	14	16	150	75	178	202
125	138	14	20	180	102	216	237

Standard/With Mounting Bracket

* Refer to Basic (page 8) for other dimensions.

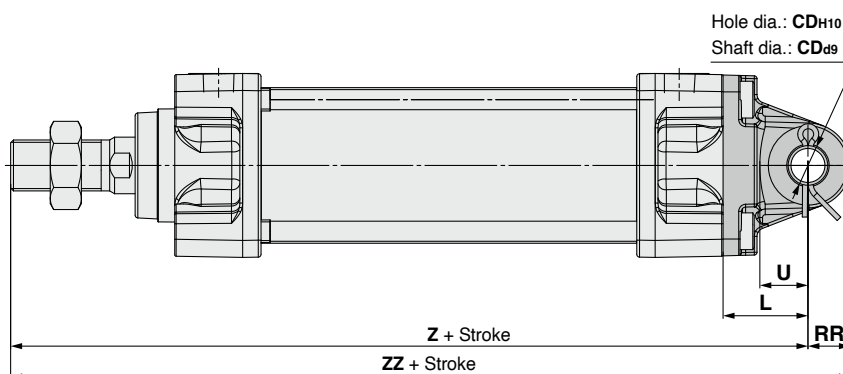
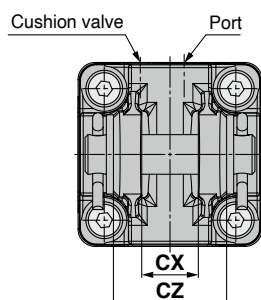
Single clevis: (M□B2C)



Bore size [mm]	CDH10	CX	L	RR	U	Z	ZZ
32	10 ^{+0.058} ₀	14 ^{-0.1} _{-0.3}	23	10.5	13	154	164.5
40	10 ^{+0.058} ₀	14 ^{-0.1} _{-0.3}	23	11	13	158	169
50	14 ^{+0.070} ₀	20 ^{-0.1} _{-0.3}	30	15	17	182	197
63	14 ^{+0.070} ₀	20 ^{-0.1} _{-0.3}	30	15	17	182	197

Bore size [mm]	CDH10	CX	L	RR	U	Z	ZZ
80	22 ^{+0.084} ₀	30 ^{-0.1} _{-0.3}	42	23	26	228	251
100	22 ^{+0.084} ₀	30 ^{-0.1} _{-0.3}	42	23	26	228	251
125	25 ^{+0.084} ₀	32 ^{-0.1} _{-0.3}	50	28	30	267	295

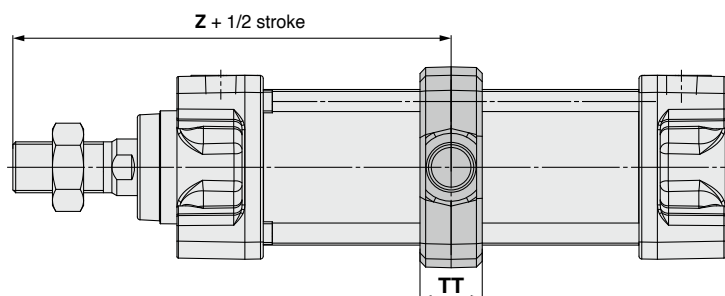
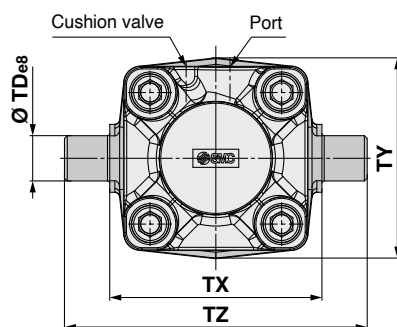
Double clevis: (M□B2D)



Bore size [mm]	CDH10	CDd9	CX	CZ	L	RR	U	Z	ZZ
32	10 ^{+0.058} ₀	10 ^{-0.040} _{-0.076}	14 ^{+0.3} _{+0.1}	28	23	10.5	13	154	164.5
40	10 ^{+0.058} ₀	10 ^{-0.040} _{-0.076}	14 ^{+0.3} _{+0.1}	28	23	11	13	158	169
50	14 ^{+0.070} ₀	14 ^{-0.050} _{-0.093}	20 ^{+0.3} _{+0.1}	40	30	15	17	182	197
63	14 ^{+0.070} ₀	14 ^{-0.050} _{-0.093}	20 ^{+0.3} _{+0.1}	40	30	15	17	182	197

Bore size [mm]	CDH10	CDd9	CX	CZ	L	RR	U	Z	ZZ
80	22 ^{+0.084} ₀	22 ^{-0.065} _{-0.117}	30 ^{+0.3} _{+0.1}	60	42	23	26	228	251
100	22 ^{+0.084} ₀	22 ^{-0.065} _{-0.117}	30 ^{+0.3} _{+0.1}	60	42	23	26	228	251
125	25 ^{+0.084} ₀	25 ^{-0.065} _{-0.117}	32 ^{+0.3} _{+0.1}	64	50	28	30	267	295

Trunnion: (M□B2T)



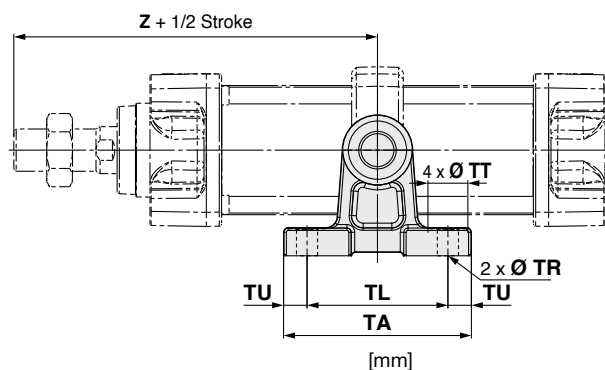
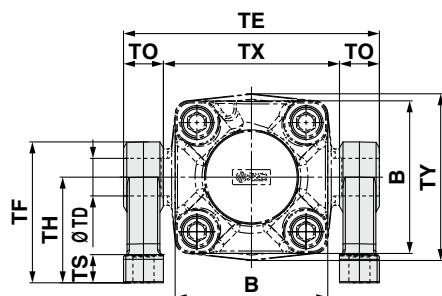
Bore size [mm]	TDø8	TT	TX	TY	TZ	Z
32	12 ^{-0.032} _{-0.059}	17	50	49	74	89
40	16 ^{-0.032} _{-0.059}	22	63	58	95	93
50	16 ^{-0.032} _{-0.059}	22	75	71	107	105
63	20 ^{-0.040} _{-0.073}	28	90	87	130	105

Bore size [mm]	TDø8	TT	TX	TY	TZ	Z
80	20 ^{-0.040} _{-0.073}	34	110	110	150	129
100	25 ^{-0.040} _{-0.073}	40	132	136	182	129
125	25 ^{-0.040} _{-0.073}	50	160	160	210	157

MB2 Series

Pivot Bracket/Trunnion and Double Clevis Pivot Bracket

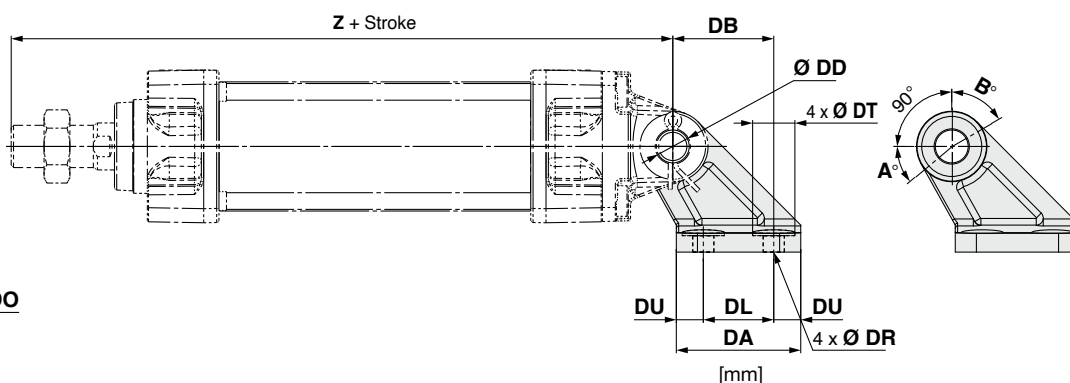
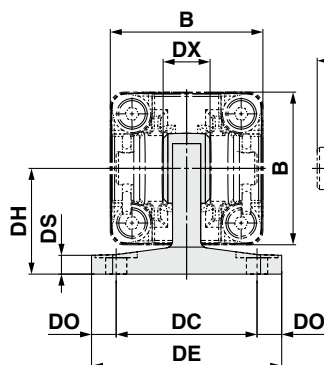
Trunnion pivot bracket for the M□B2T



Bore size [mm]	Part no.	B	TA	TL	TU	TC	TX	TE	TO	TY	TR	TT	TS	TH	TF	Z	TD _{H10}
32	MB-S03	46	62	45	8.5	62	50	74	12	49	7	13	10	35	47	89	12 ^{+0.070} ₀
40	MB-S04	52	80	60	10	80	63	97	17	58	9	17	12	45	60	93	16 ^{+0.070} ₀
50		65	80	60	10	92	75	109	17	71	9	17	12	45	60	105	16 ^{+0.070} ₀
63	MB-S06	75	100	70	15	110	90	130	20	87	11	22	14	60	80	105	20 ^{+0.084} ₀
80		95	100	70	15	130	110	150	20	110	11	22	14	60	80	129	20 ^{+0.084} ₀
100	MB-S10	114	120	90	15	158	132	184	26	136	13.5	24	17	75	100	129	25 ^{+0.084} ₀
125	MB-S12	136	142	105	18.5	186	160	212	26	160	13.5	24	25	85	115	157	25 ^{+0.084} ₀

* When ordering trunnion pivot brackets, order 2 pieces per cylinder.

Double clevis pivot bracket for the M□B2D



Bore size [mm]	Part no.	B	DA	DB	DL	DU	DC	DX	DE	DO	DR	DT	DS	DH	Z	DD _{H10}
32	MB-B03	46	42	32	22	10	44	14	62	9	6.6	15	7	33	154	10 ^{+0.058} ₀
40		52	42	32	22	10	44	14	62	9	6.6	15	7	33	158	10 ^{+0.058} ₀
50	MB-B05	65	53	43	30	11.5	60	20	81	10.5	9	18	8	45	182	14 ^{+0.070} ₀
63		75	53	43	30	11.5	60	20	81	10.5	9	18	8	45	182	14 ^{+0.070} ₀
80	MB-B08	95	73	64	45	14	86	30	111	12.5	11	22	10	65	228	22 ^{+0.084} ₀
100		114	73	64	45	14	86	30	111	12.5	11	22	10	65	228	22 ^{+0.084} ₀
125	MB-B12	136	90	78	60	15	110	32	136	13	13.5	24	14	75	267	25 ^{+0.084} ₀

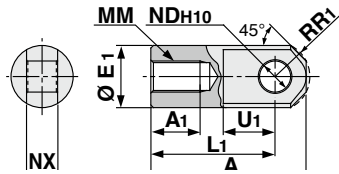
Rotating Angle

Bore size [mm]	A°	B°	A° + B° + 90°
32, 40	25°	45°	160°
50, 63	40°	60°	190°
80, 100	30°	55°	175°
125	30°	50°	170°

MB2 Series

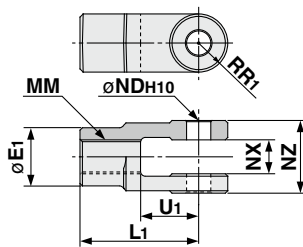
Rod End Bracket Dimensions

Single Knuckle Joint



[mm]										
Bore size [mm]	Part no.	A	A ₁	E ₁	L ₁	MM	R ₁	U ₁	NDH ₁₀	NX
32	I-03M	40	14	20	30	M10 x 1.25	12	16	10 ^{+0.058} ₀	14 ^{-0.10} _{-0.30}
40	I-04M	50	19	22	40	M14 x 1.5	12.5	19	10 ^{+0.058} ₀	14 ^{-0.10} _{-0.30}
50, 63	I-05M	64	24	28	50	M18 x 1.5	16.5	24	14 ^{+0.070} ₀	20 ^{-0.10} _{-0.30}
80	I-08M	80	26	40	60	M22 x 1.5	23.5	34	22 ^{+0.084} ₀	30 ^{-0.10} _{-0.30}
100	I-10M	80	26	40	60	M26 x 1.5	23.5	34	22 ^{+0.084} ₀	30 ^{-0.10} _{-0.30}
125	I-12M	119	36	46	92	M27 x 2	28.5	34	25 ^{+0.084} ₀	32 ^{-0.10} _{-0.30}

Double Knuckle Joint

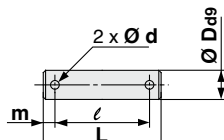


[mm]									
Bore size [mm]	Part no.	E ₁	L ₁	MM	R ₁	U ₁	NDH ₁₀	NX	NZ
32	Y-03M*1	20	30	M10 x 1.25	10	16	10 ^{+0.058} ₀	14 ^{+0.30} _{-0.10}	28 ^{-0.10} _{-0.30}
40	Y-04M*1	22	40	M14 x 1.5	11	19	10 ^{+0.058} ₀	14 ^{+0.30} _{-0.10}	28 ^{-0.10} _{-0.30}
50, 63	Y-05M*1	28	50	M18 x 1.5	14	24	14 ^{+0.070} ₀	20 ^{+0.30} _{-0.10}	40 ^{-0.10} _{-0.30}
80	Y-08M*1	40	65	M22 x 1.5	20	34	22 ^{+0.084} ₀	30 ^{+0.30} _{-0.10}	60 ^{-0.10} _{-0.30}
100	Y-10M*1	40	65	M26 x 1.5	20	34	22 ^{+0.084} ₀	30 ^{+0.30} _{-0.10}	60 ^{-0.10} _{-0.30}
125	Y-12M*2	46	100	M27 x 2	27	42	25 ^{+0.084} ₀	32 ^{+0.30} _{-0.10}	64 ^{-0.10} _{-0.30}

*1 A knuckle joint pin, 2 split pins, and 2 flat washers are included.

*2 A knuckle joint pin and 2 split pins are included.

Knuckle Joint Pin/Clevis Pin

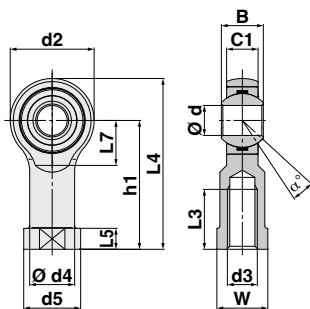


[mm]							
Bore size [mm]	Part no.	D _{d9}	L	ℓ	m	d (Drill through)	Split pin
32, 40	CD-M03*1	10 ^{-0.040} _{-0.076}	44	36	4	3	Ø 3 x 18 ℓ
50, 63	CD-M05*1	14 ^{-0.050} _{-0.093}	60	51	4.5	4	Ø 4 x 25 ℓ
80, 100	CD-M08*1	22 ^{-0.065} _{-0.117}	82	72	5	4	Ø 4 x 35 ℓ
125	IY-12*2	25 ^{-0.065} _{-0.117}	79.5	69.5	5	4	Ø 4 x 40 ℓ

*1 2 split pins and 2 flat washers are included.

*2 2 split pins are included.

Rod End



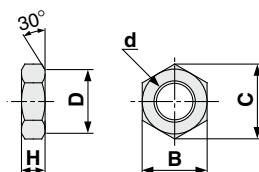
[mm]															
Applicable bore size	Model	d _{H7}	d ₃	B ^{-0.12}	C ₁	d ₂	d ₄	d ₅	h ₁	L _{3min}	L ₄	L ₅	L ₇	W	α°
32	KJ10D	10	M10 x 1.25	14	10.5	28	15	19	43	20	57	6.5	15	17	13
40	KJ14D	14	M14 x 1.5	19	13.5	36	20	25	57	25	75	8	19	22	15
50, 63	KJ18D	18	M18 x 1.5	23	16.5	46	25	31	71	32	94	10	25	27	15
80	KJ22D	22	M22 x 1.5	28	20	54	30	37	84	37	111	12	29	32	15
100	KJ26D	25	M26 x 1.5	31	22	60	33.5	42	94	48	124	12	32	36	15
125	KJ27D	30	M27 x 2.0	37	25	70	40	50	110	51	145	15	36	41	17

· The KJ27D is produced upon receipt of order.

· The allowable radial static load shows the allowable value of a single rod end. When the rod end is used for connecting to a cylinder, the allowable radial static load conforms to the cylinder specifications.

* Refer to the **catalogue on www.smc.eu** for specifications and precautions.

Rod End Nut (Standard)



(mm)						
Bore size [mm]	Part no.	d	H	B	C	D
32	NT-03	M10 x 1.25	6	17	19.6	16.5
40	NT-04	M14 x 1.5	8	22	25.4	21
50, 63	NT-05	M18 x 1.5	11	27	31.2	26
80	NT-08	M22 x 1.5	13	32	37.0	31
100	NT-10	M26 x 1.5	16	41	47.3	39
125	NT-12M	M27 x 2	16	41	47.3	39

Bracket Combinations

Bracket combination available.....▶ Refer to the figure below.

Bracket for cylinder Bracket for workpiece	Single clevis	Double clevis	Single knuckle joint	Double knuckle joint	Double clevis pivot bracket
Single clevis		①	—	②	—
Double clevis	③		④	—	⑨
Single knuckle joint	—	⑤		⑥	—
Double knuckle joint	⑦	—	⑧		⑩

No.	Appearance	No.	Appearance
①		⑥	
②		⑦	
③		⑧	
④		⑨	
⑤		⑩	

Air Cylinder: Standard Type Double Acting, Double Rod **MB2W Series**

RoHS

Ø 32, Ø 40, Ø 50, Ø 63, Ø 80, Ø 100, Ø 125

How to Order

MB2W L 32 - 150

With auto switch **MDB2W L 32 - 150 - M9BW**

With auto switch
(Built-in magnet)

Mounting

B	Basic
L	Axial foot
F	Flange
T	Trunnion

* The trunnion type is mounted before shipment.
* Other mounting brackets are shipped together with the product.

Bore size

32	32 mm
40	40 mm
50	50 mm
63	63 mm
80	80 mm
100	100 mm
125	125 mm

Port thread type

-	Rc
TN	NPT
TF	G

Cylinder stroke [mm]
Refer to page 15 for standard strokes.

Number of auto switches

-	2
S	1
3	3
n	n

Auto switch

-	Without auto switch
---	---------------------

* For applicable auto switches, refer to the table below.

Suffix (Rod boot)

-	None
J	Nylon tarpaulin (One end)
JJ	Nylon tarpaulin (Both ends)
K	Heat-resistant tarpaulin (One end)
KK	Heat-resistant tarpaulin (Both ends)

* For details, refer to page 15.

Applicable Auto Switches / Refer to the catalogue on www.smc.eu for further information on auto switches.

Type	Special function	Electrical entry	Indicator light	Wiring (Output)	Load voltage			Auto switch model		Lead wire length [m]					Pre-wired connector	Applicable load		
					DC	AC			Perpendicular	In-line	0.5 (—)	1 (M)	3 (L)	5 (Z)				None (N)
Solid state auto switch	— — —	Grommet	Yes	3-wire (NPN)	24 V	5 V,	—	M9NV	M9N	●	●	●	○	—	○	IC circuit	Relay, PLC	
				3-wire (PNP)		12 V		M9PV	M9P	●	●	●	○	—	○			
				2-wire		12 V		M9BV	M9B	●	●	●	○	—	○			
	Diagnostic indication (2-colour indicator) Water resistant (2-colour indicator)	Grommet		3-wire (NPN)		5 V,		M9NVV	M9NW	●	●	●	○	—	○	IC circuit		
				3-wire (PNP)		12 V		M9PVV	M9PW	●	●	●	○	—	○			
				2-wire		12 V		M9BVV	M9BW	●	●	●	○	—	○	—		
				3-wire (NPN)		5 V,		M9NAV*1	M9NA*1	○	○	●	○	—	○	IC circuit		
				3-wire (PNP)		12 V		M9PAV*1	M9PA*1	○	○	●	○	—	○			
				2-wire		12 V		M9BAV*1	M9BA*1	○	○	●	○	—	○			—
				Reed auto switch		— — —		Grommet	Yes	3-wire (NPN equivalent)	—	5 V	—	A96V	A96	●		●
No	2-wire	24 V	12 V		100 V		A93V		A93	●	●	●	●	—	○*2	—	Relay, PLC	
					100 V or less		A90V		A90	●	●	●	●	—	○*2	IC circuit	—	

*1 Water-resistant type auto switches can be mounted on the above models, but SMC cannot guarantee water resistance.

A water-resistant type cylinder is recommended for use in an environment which requires water resistance.

*2 The load voltage used is 24 VDC.

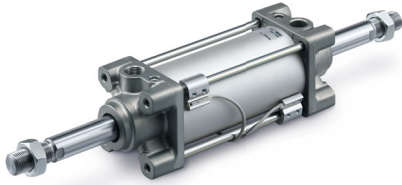
* Lead wire length symbols: 0.5 m..... — (Example) M9NW 3 m..... L (Example) M9NWL
1 m..... M (Example) M9NWM 5 m..... Z (Example) M9NWZ

* Auto switches marked with a "○" are produced upon receipt of order.

* Auto switches are shipped together with the product but do not come assembled. (However, the auto switch mounting brackets are assembled before shipment.)

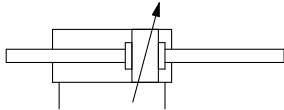
* There are applicable auto switches other than those listed above. For details, refer to page 32.

MB2W Series



Symbol

Double acting type, Air cushion



Air Cushion Stroke

Bore size [mm]	Effective cushion length [mm]
32	17
40	17
50	17
63	17
80	26
100	26
125	26



Made to Order

Symbol	Specifications
-XA□	Change of rod end shape
-XC14	Change of trunnion bracket mounting position

Refer to pages 30 to 36 for cylinders with auto switches.

- Auto Switch Proper Mounting Position (Detection at stroke end) and Mounting Height
- Minimum Stroke for Auto Switch Mounting
- Auto Switch Mounting Brackets/Part Nos.
- Operating Range

Specifications

Bore size [mm]	32	40	50	63	80	100	125
Action	Double acting, Double rod						
Fluid	Air						
Proof pressure	1.5 MPa						
Max. operating pressure	1.0 MPa						
Min. operating pressure	0.05 MPa						
Ambient and fluid temperatures	Without auto switch: -10 to 70 °C With auto switch: -10 to 60 °C (No freezing)						
Lubrication	Not required (Non-lube)						
Piston speed	50 to 1000 mm/s						
Stroke length tolerance	Up to 500: $^{+2.0}_0$, 501 to 1000: $^{+2.4}_0$, 1001 to 1500: $^{+2.8}_0$, 1501 to 2000: $^{+3.2}_0$						
Cushion*1	Air cushion + Rubber bumper						
Mounting	Basic, Axial foot, Flange, Trunnion						

*1 Kinetic energy is identical to that of the double acting, single rod type.

* Stroke length tolerance does not include the amount of bumper change. There will be 0.1 to 1.0 mm of bumper distortion depending on the supply pressure.

Strokes

			[mm]	
Bore size	Standard stroke		Max.	
[mm]	Stroke range ①	Stroke range ②	manufacturable stroke	
32	50, 75, 100, 125, 150, 175, 200, 250, 300, 350, 400, 450, 500	Up to 1000	1000	
40	50, 75, 100, 125, 150, 175, 200, 250, 300, 350, 400, 450, 500			
50	50, 75, 100, 125, 150, 175, 200, 250, 300, 350, 400, 450, 500, 600	Up to 1200	1800	
63	50, 75, 100, 125, 150, 175, 200, 250, 300, 350, 400, 450, 500, 600			
80	50, 75, 100, 125, 150, 175, 200, 250, 300, 350, 400, 450, 500, 600, 700, 800	Up to 1500	2000	
100	50, 75, 100, 125, 150, 175, 200, 250, 300, 350, 400, 450, 500, 600, 700, 800			
125	50, 75, 100, 125, 150, 175, 200, 250, 300, 350, 400, 450, 500, 600, 700, 800, 900, 1000			

* Applicable strokes should be confirmed according to the usage. For details, refer to the "Air Cylinders Model Selection" in the **catalogue on www.smc.eu**. In addition, products that exceed the stroke range ① might not be able to fulfill the specifications due to deflection, etc.

* The manufacturing of intermediate strokes is possible. (Spacers are not used.)

* Strokes exceeding the stroke range ② are available as a special order.

* When using a rod boot, a stroke range of up to 1000 mm is available. Strokes over 1000 mm are available as a special order.

* Using a stroke of a length which is smaller than the effective cushion length may result in reduced air cushion performance.

Rod Boot Material

Symbol	Material	Max. ambient temp.
J	Nylon tarpaulin	70 °C
K	Heat-resistant tarpaulin	110 °C*1

*1 Max. ambient temperature for rod boot itself

* The rod boot replacement part numbers are listed in the "Maintenance Parts List." Refer to the **catalogue on www.smc.eu**.

Mounting Brackets/Order Nos.

Bore size [mm]	32	40	50	63	80	100	125
Axial foot	MB-L03	MB-L04	MB-L05	MB-L06	MB-L08	MB-L10	MB-L12
Flange	MB-F03	MB-F04	MB-F05	MB-F06	MB-F08	MB-F10	MB-F12

* It is possible to order the mounting brackets separately. Refer to each bore size in the table above for part numbers.

* When ordering axial foot brackets, order 2 pieces per cylinder.

Mounting Brackets, Accessories/Material, Surface Treatment

Segment	Description	Material	Surface treatment (Ø 32 to Ø 100)	Surface treatment (Ø 125)
Mounting brackets	Axial foot	Rolled steel	Zinc chromating	Metallic silver colour painting
	Flange	Cast iron	Metallic silver colour painting	Metallic silver colour painting
	Trunnion	Cast iron	Metallic silver colour painting after zinc chromating	Metallic silver colour painting
Accessories	Single knuckle joint	Free-cutting steel	Zinc chromating	Electroless nickel plating
	Double knuckle joint	Cast iron	Metallic silver colour painting	Metallic silver colour painting
	Rod end	Carbon steel	Zinc plating	Zinc plating
	Knuckle joint pin Clevis pin	Carbon steel	—	—
	Rod end nut	Rolled steel	Zinc chromating	Zinc chromating

* Refer to pages 11 and 12 for accessory dimensions.

Theoretical Output

(Unit: N) OUT ← IN →

Bore size [mm]	Rod size [mm]	Operating direction	Piston area [mm ²]	Operating pressure [MPa]								
				0.2	0.3	0.4	0.5	0.6	0.7	0.8	0.9	1.0
32	12	IN/OUT	691	138	207	276	346	415	484	553	622	691
40	16	IN/OUT	1056	211	317	422	528	634	739	845	950	1056
50	20	IN/OUT	1649	330	495	660	825	989	1154	1319	1484	1649
63	20	IN/OUT	2803	561	841	1121	1402	1682	1962	2242	2523	2803
80	25	IN/OUT	4536	907	1361	1814	2268	2722	3175	3629	4082	4536
100	30	IN/OUT	7147	1429	2144	2859	3574	4288	5003	5718	6432	7147
125	32	IN/OUT	11468	2294	3440	4588	5734	6881	8028	9174	10321	11468

* Theoretical output [N] = Pressure [MPa] x Piston area [mm²]

Weight

Bore size [mm]		32	40	50	63	80	100	125
Basic weight	Basic	0.54	0.75	1.33	1.54	2.88	4.10	5.86
	Axial foot	0.66	0.89	1.55	1.82	3.38	4.76	7.94
	Flange	0.83	1.12	1.78	2.33	4.33	5.93	10.02
	Trunnion	0.83	1.11	1.81	2.34	4.43	5.79	8.84
Additional weight per 50 mm of stroke	All mounting brackets	0.15	0.24	0.37	0.38	0.61	0.82	1.02
Additional weight for magnet	With auto switch (Built-in magnet)	0.01	0.01	0.01	0.02	0.02	0.03	0.06
Accessories	Trunnion pivot bracket (1 pc.)	0.09	0.21	0.21	0.4	0.4	0.82	1.68
	Single knuckle joint	0.15	0.23	0.26	0.26	0.60	0.83	1.08
	Double knuckle joint (with pin)	0.22	0.37	0.43	0.43	0.87	1.27	1.58
	Rod end	0.07	0.16	0.3	0.3	0.49	0.67	1.12

Calculation example)

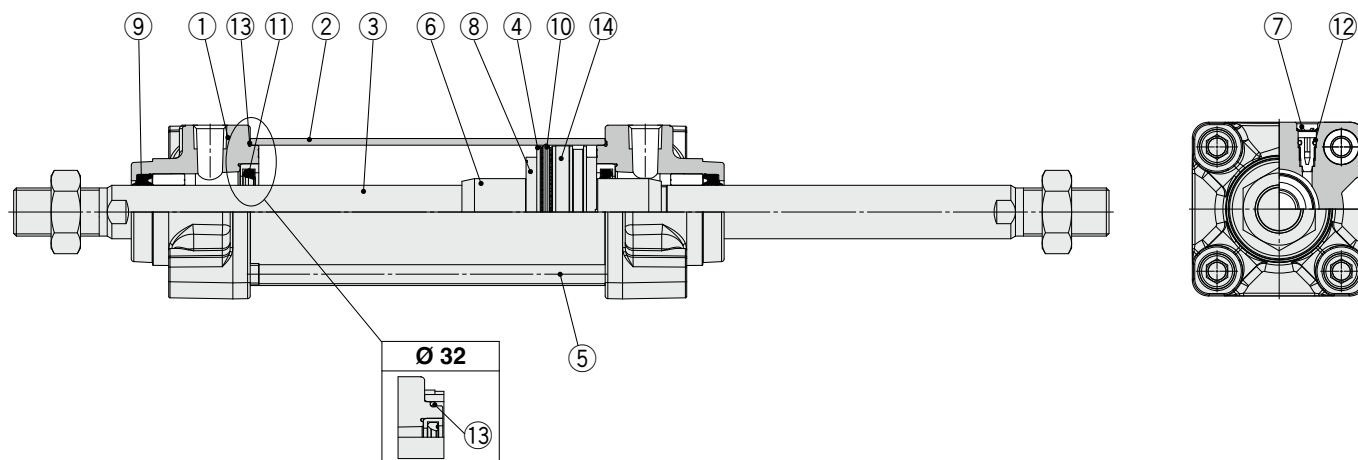
MB2WB32-100 (Basic, Ø 32, 100 mm stroke)

- Basic weight 0.54 (Basic, Ø 32)
- Additional weight 0.15/50 mm stroke
- Cylinder stroke 100 mm stroke

$$0.54 + 0.15 \times 100/50 = \mathbf{0.84 \text{ kg}}$$

MB2W Series

Replacement Parts



Component Parts

No.	Description
1	Rod cover
2	Cylinder tube
3	Piston rod
4	Piston
5	Tie-rod
6	Cushion ring
7	Cushion valve
8	Bumper
9	Rod seal
10	Piston seal
11	Cushion seal
12	Cushion valve seal
13	Cylinder tube gasket
14	Magnet

Replacement Parts/Seal Kit

Bore size [mm]	Kit no.	Contents
32	MB2W32-PS	Set of the nos. ⑧ (2 pcs.), ⑨ (2 pcs.), ⑩ (1 pc.), ⑪ (2 pcs.), ⑫ (2 pcs.)
40	MB2W40-PS	
50	MB2W50-PS	
63	MB2W63-PS	
80	MB2W80-PS	
100	MB2W100-PS	
125	MB2W125-PS	

* Seal kits can be ordered using the seal kit part number corresponding to each bore size.

* Trunnion type should not be disassembled.

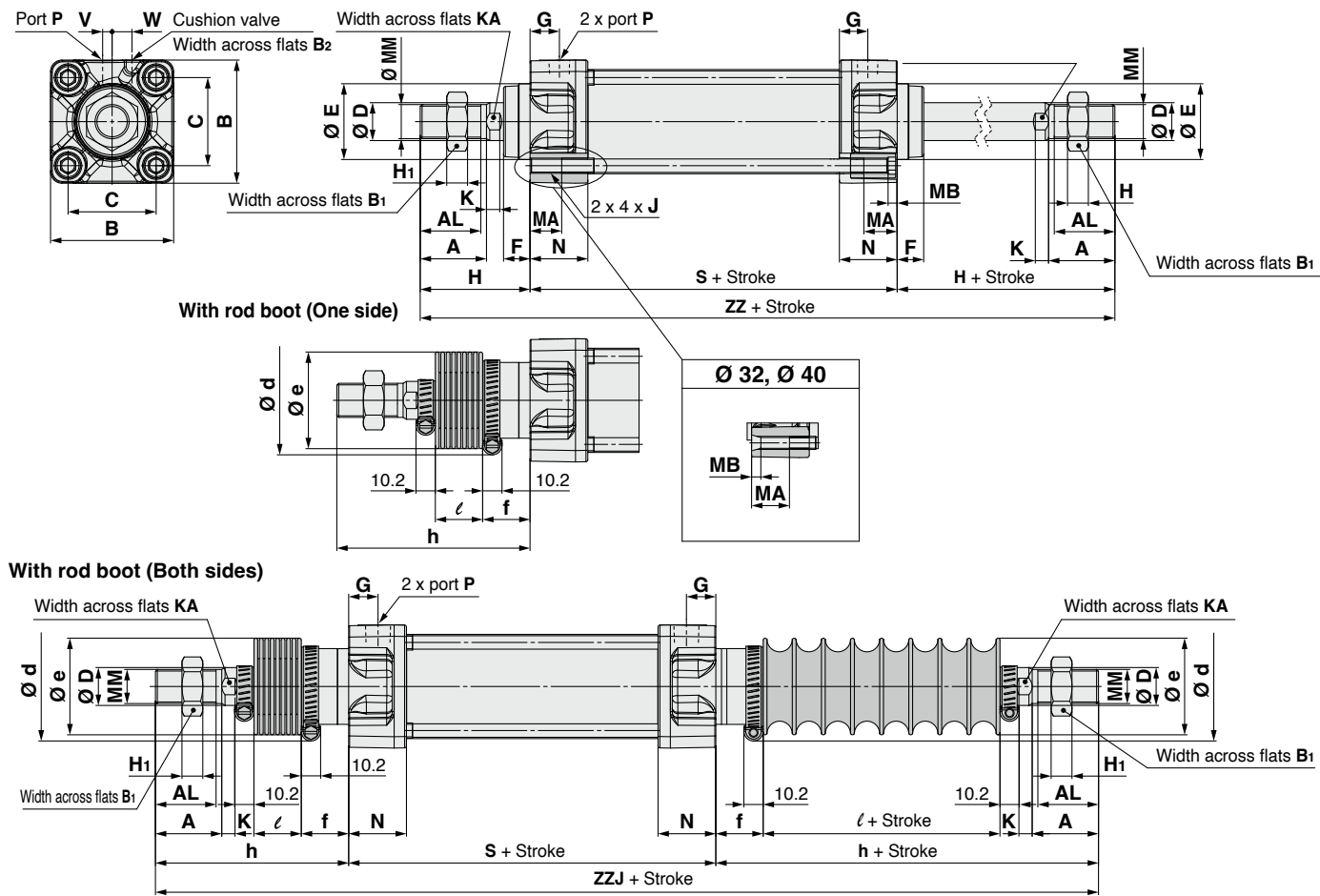
* The seal kit includes a grease pack (10 g for Ø 32 to Ø 50, 20 g for Ø 63 and Ø 80, 30 g for Ø 100 and Ø 125).

Order with the following part number when only the grease pack is needed.

Grease pack part number: GR-S-010 (10 g), GR-S-020 (20 g)

Standard

Basic: (M D B2WB)



[mm]																								
Bore size [mm]	A	AL	B	B ₁	B ₂	C	D	E	F	G	H	H ₁	J	K	KA	MA	MB	MM	N	P	S	V	W	ZZ
32	22	19.5	46	17	2	32.5	12	30	13	13	47	6	M6 x 1	6	10	16	4	M10 x 1.25	27	1/8	84	4	7	178
40	30	27	52	22	2	38	16	35	13	14	51	8	M6 x 1	6	14	16	4	M14 x 1.5	27	1/4	84	4	10	186
50	35	32	65	27	2	46.5	20	40	14	15.5	58	11	M8 x 1.25	7	18	16	5	M18 x 1.5	31	1/4	94	5	10.5	210
63	35	32	75	27	2	56.5	20	45	14	16.5	58	11	M8 x 1.25	7	18	16	5	M18 x 1.5	31	3/8	94	9	12	210
80	40	37	95	32	3	72	25	45	20	19	72	13	M10 x 1.5	10	22	16	5	M22 x 1.5	38	3/8	114	11.5	12	258
100	40	37	114	41	3	89	30	55	20	19	72	16	M10 x 1.5	10	26	16	5	M26 x 1.5	38	1/2	114	17	13	258
125	54	50	136	41	4	110	32	60	27	19	97	16	M12 x 1.75	13	27	20	6	M27 x 2.0	38	1/2	120	17	15	314

With Rod Boot

Bore size [mm]	d	e	f	ℓ												h											
				1 to 50	51 to 100	101 to 150	151 to 200	201 to 300	301 to 400	401 to 500	501 to 600	601 to 700	701 to 800	801 to 900	901 to 1000	1 to 50	51 to 100	101 to 150	151 to 200	201 to 300	301 to 400	401 to 500	501 to 600	601 to 700	701 to 800	801 to 900	901 to 1000
32	54	36	23	12.5	25	37.5	50	75	100	125	150	175	200	225	250	73	86	98	111	136	161	186	211	236	261	286	311
40	56	41	23	12.5	25	37.5	50	75	100	125	150	175	200	225	250	81	94	106	119	144	169	194	219	244	269	294	319
50	64	51	25	12.5	25	37.5	50	75	100	125	150	175	200	225	250	89	102	114	127	152	177	202	227	252	277	302	327
63	64	51	25	12.5	25	37.5	50	75	100	125	150	175	200	225	250	89	102	114	127	152	177	202	227	252	277	302	327
80	68	56	29	12.5	25	37.5	50	75	100	125	150	175	200	225	250	101	114	126	139	164	189	214	239	264	289	314	339
100	76	61	29	12.5	25	37.5	50	75	100	125	150	175	200	225	250	101	114	126	139	164	189	214	239	264	289	314	339
125	82	75	27	10	20	30	40	60	80	100	120	140	160	180	200	120	130	140	150	170	190	210	230	250	270	290	310

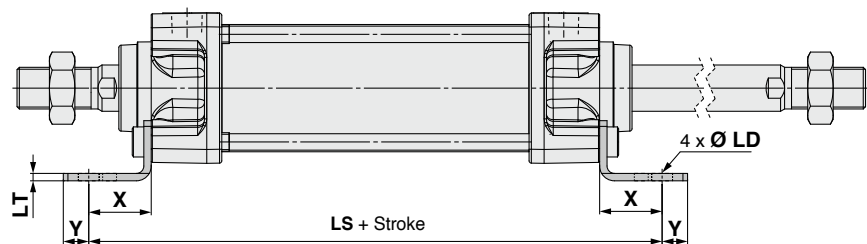
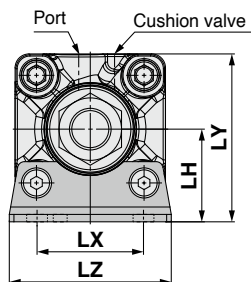
ZZJ													[mm]
Bore size [mm]													
	1 to 50	51 to 100	101 to 150	151 to 200	201 to 300	301 to 400	401 to 500	501 to 600	601 to 700	701 to 800	801 to 900	901 to 1000	
32	230	256	280	306	356	406	456	506	556	606	656	706	
40	246	272	296	322	372	422	472	522	572	622	672	722	
50	272	298	322	348	398	448	498	548	598	648	698	748	
63	272	298	322	348	398	448	498	548	598	648	698	748	
80	316	342	366	392	442	492	542	592	642	692	742	792	
100	316	342	366	392	442	492	542	592	642	692	742	792	
125	360	380	400	420	460	500	540	580	620	660	700	740	

MB2W Series

Standard/With Mounting Bracket

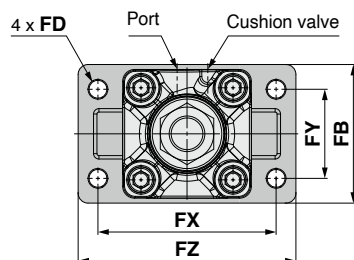
* Refer to Basic (page 18) for other dimensions.

Axial foot: (M□B2WL)



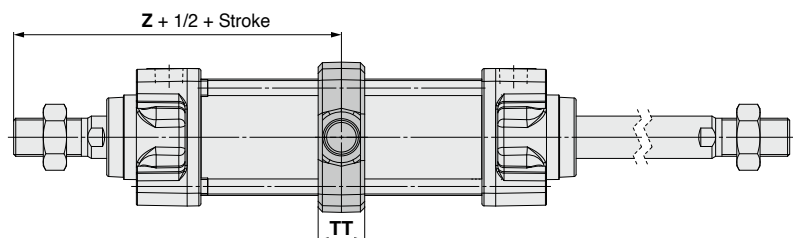
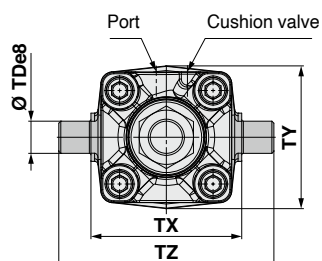
Bore size [mm]	X	Y	LD	LH	LS	LT	LX	LY	LZ
32	22	9	7	30	128	3.2	32	53	50
40	24	11	9	33	132	3.2	38	59	55
50	27	11	9	40	148	3.2	46	72.5	70
63	27	14	12	45	148	3.6	56	82.5	80
80	30	14	12	55	174	4.5	72	102.5	100
100	32	16	14	65	178	4.5	89	122	120
125	45	20	14	81	210	8	90	149	136

Rod flange: (M□B2WF)



Bore size [mm]	Fd	FB	FD	FT	FX	FY	FZ
32	24.5	50	7	10	64	32	79
40	29.5	55	9	10	72	36	90
50	35.5	70	9	12	90	45	110
63	38.5	80	9	12	100	50	120
80	41	100	12	16	126	63	153
100	46	120	14	16	150	75	178
125	57	138	14	20	180	102	216

Trunnion: (M□B2WT)



Bore size [mm]	TDe8	TT	TX	TY	TZ	Z
32	12	17	50	49	74	89
40	16	22	63	58	95	93
50	16	22	75	71	107	105
63	20	28	90	87	130	105
80	20	34	110	110	150	129
100	25	40	132	136	182	129
125	25	50	160	160	210	157

Air Cylinder: Non-rotating Rod Type Double Acting, Single Rod

MB2K Series

Ø 32, Ø 40, Ø 50, Ø 63, Ø 80, Ø 100

RoHS

How to Order

MB2K B 32 - 50

With auto switch MDB2K B 32 - 50 - M9BW

With auto switch
(Built-in magnet)

Mounting

B	Basic
L	Axial foot
F	Rod flange
G	Head flange
C	Single clevis
D	Double clevis
T	Trunnion

* The trunnion type is mounted before shipment.
* Other mounting brackets are shipped together with the product.

Bore size

32	32 mm
40	40 mm
50	50 mm
63	63 mm
80	80 mm
100	100 mm

Port thread type

—	Rc
TN	NPT
TF	G

Pivot bracket

—	No bracket
N	Pivot bracket

* Only for D and T mounting types
* The bracket is shipped together with the product.
* For details, refer to page 11.

Auto switch

—	Without auto switch
---	---------------------

* For applicable auto switches, refer to the table below.

Number of auto switches

—	2
S	1
3	3
n	n

Suffix (Rod boot)

—	None
J	Nylon tarpaulin
K	Heat-resistant tarpaulin

* For details, refer to page 22.

Cylinder stroke [mm]

Refer to page 21 for standard strokes.

Rod end bracket

—	No bracket (Rod end nut provided as standard)
V	Single knuckle joint
W	Double knuckle joint
Q	Rod end

* A knuckle joint pin is not provided with the single knuckle joint.
* The bracket is shipped together with the product.
* For details, refer to page 12.

Applicable Auto Switches / Refer to the catalogue on www.smc.eu for further information on auto switches.

Type	Special function	Electrical entry	Indicator light	Wiring (Output)	Load voltage			Auto switch model		Lead wire length [m]					Pre-wired connector	Applicable load	
					DC	AC	0.5 (—)			1 (M)	3 (L)	5 (Z)	None (N)				
								Perpendicular	In-line								
Solid state auto switch	— — —	Grommet	Yes	3-wire (NPN)	24 V	5 V,	—	M9NV	M9N	●	●	●	○	—	○	IC circuit	Relay, PLC
				3-wire (PNP)		12 V		M9PV	M9P	●	●	●	○	—	○		
				2-wire		12 V		M9BV	M9B	●	●	●	○	—	○		
	Diagnostic indication (2-colour indicator) Water resistant (2-colour indicator)	Grommet		3-wire (NPN)		5 V,		M9NWW	M9NW	●	●	●	○	—	○	IC circuit	
				3-wire (PNP)		12 V		M9PWW	M9PW	●	●	●	○	—	○		
				2-wire		12 V		M9BWW	M9BW	●	●	●	○	—	○	—	
				3-wire (NPN)		5 V,		M9NAV*1	M9NA*1	○	○	●	○	—	○	IC circuit	
				3-wire (PNP)		12 V		M9PAV*1	M9PA*1	○	○	●	○	—	○		
				2-wire		12 V		M9BAV*1	M9BA*1	○	○	●	○	—	○		
				Reed auto switch		— — —		Grommet	Yes	3-wire (NPN equivalent)	—	5 V	—	A96V	A96	●	
No	2-wire	24 V	12 V		100 V		A93V			A93	●	●	●	●	—	○*2	—
					100 V or less		A90V		A90	●	●	●	●	—	○*2	IC circuit	—

*1 Water-resistant type auto switches can be mounted on the above models, but SMC cannot guarantee water resistance.

A water-resistant type cylinder is recommended for use in an environment which requires water resistance.

*2 The load voltage used is 24 VDC.

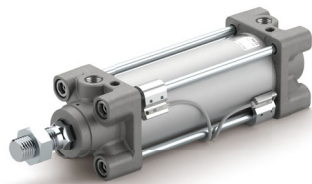
* Lead wire length symbols: 0.5 m..... — (Example) M9NW 3 m..... L (Example) M9NWL
1 m..... M (Example) M9NWM 5 m..... Z (Example) M9NWZ

* Auto switches marked with a "○" are produced upon receipt of order.

* Auto switches are shipped together with the product but do not come assembled. (However, the auto switch mounting brackets are assembled before shipment.)

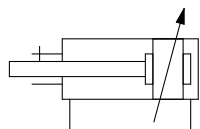
* There are applicable auto switches other than those listed above. For details, refer to page 32.

MB2K Series



Symbol

Double acting type



Specifications

Bore size [mm]	32	40	50	63	80	100
Action	Double acting, Single rod					
Fluid	Air					
Proof pressure	1.5 MPa					
Max. operating pressure	1.0 MPa					
Min. operating pressure	0.05 MPa					
Ambient and fluid temperatures	Without auto switch: -10 to 70 °C With auto switch: -10 to 60 °C (No freezing)					
Lubrication	Not required (Non-lube)					
Piston speed	50 to 1000 mm/s					
Stroke length tolerance	Up to 500: $^{+2.0}_0$, 501 to 800: $^{+2.4}_0$					
Cushion	Air cushion + Rubber bumper					
Mounting	Basic, Axial foot, Rod flange, Head flange, Single clevis, Double clevis, Trunnion					

* Stroke length tolerance does not include the amount of bumper change. There will be 0.1 to 1.0 mm of bumper distortion depending on the supply pressure.

Air Cushion Stroke

Bore size [mm]	Effective cushion length [mm]
32	17
40	17
50	17
63	17
80	26
100	26



Made to Order

Symbol	Specifications
-XA□	Change of rod end shape
-XC14	Change of trunnion bracket mounting position

Refer to pages 30 to 36 for cylinders with auto switches.

- Auto Switch Proper Mounting Position (Detection at stroke end) and Mounting Height
- Minimum Stroke for Auto Switch Mounting
- Auto Switch Mounting Brackets/Part Nos.
- Operating Range

Strokes

Bore size [mm]	Standard stroke [mm]
32	50, 75, 100, 125, 150, 175, 200, 250, 300, 350, 400, 450, 500
40	50, 75, 100, 125, 150, 175, 200, 250, 300, 350, 400, 450, 500
50	50, 75, 100, 125, 150, 175, 200, 250, 300, 350, 400, 450, 500, 600
63	50, 75, 100, 125, 150, 175, 200, 250, 300, 350, 400, 450, 500, 600
80	50, 75, 100, 125, 150, 175, 200, 250, 300, 350, 400, 450, 500, 600, 700, 800
100	50, 75, 100, 125, 150, 175, 200, 250, 300, 350, 400, 450, 500, 600, 700, 800

* The manufacturing of intermediate strokes is possible. (Spacers are not used.)

* Strokes exceeding the standard stroke range are available as a special order.

* Using a stroke of a length which is smaller than the effective cushion length may result in reduced air cushion performance.

Mounting Brackets/Order Nos.

Bore size [mm]	32	40	50	63	80	100
Axial foot*1	MB-L03	MB-L04	MB-L05	MB-L06	MB-L08	MB-L10
Flange	MB-F03	MB-F04	MB-F05	MB-F06	MB-F08	MB-F10
Single clevis	MB-C03	MB-C04	MB-C05	MB-C06	MB-C08	MB-C10
Double clevis	MB-D03	MB-D04	MB-D05	MB-D06	MB-D08	MB-D10

- *1 When ordering axial foot brackets, order 2 pieces per cylinder.
 * It is possible to order the mounting brackets separately. Refer to each bore size in the table above for part numbers.
 * Parts included with each type of mounting bracket are as follows.
 Axial foot, Flange, Single clevis: Body mounting bolt
 Double clevis: Body mounting bolt, Clevis pin, Flat washer (2 pcs.), Split pin (2 pcs.)
 → Refer to page 12.

Rod Boot Material

Symbol	Material	Max. ambient temp.
J	Nylon tarpaulin	70 °C
K	Heat-resistant tarpaulin	110 °C*1

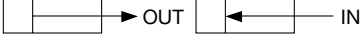
- *1 Max. ambient temperature for rod boot itself
 * The rod boot replacement part numbers are listed in the "Maintenance Parts List." Refer to the **catalogue on www.smc.eu..**

Mounting Brackets, Accessories/Material, Surface Treatment

Segment	Description	Material	Surface treatment (Ø 32 to Ø 100)
Mounting brackets	Axial foot	Rolled steel	Zinc chromating
	Flange	Cast iron	Metallic silver colour painting
	Single clevis	Cast iron	Metallic silver colour painting after zinc plating
	Double clevis	Cast iron	Metallic silver colour painting after zinc plating
	Trunnion	Cast iron	Metallic silver colour painting after zinc chromating
Accessories	Double clevis pivot bracket	Cast iron	Metallic silver colour painting after zinc chromating
	Trunnion pivot bracket	Cast iron	Metallic silver colour painting after zinc chromating
	Single knuckle joint	Free-cutting steel	Zinc chromating
	Double knuckle joint	Cast iron	Metallic silver colour painting
	Rod end	Carbon steel	Zinc plating
	Knuckle joint pin	Carbon steel	—
	Clevis pin	Carbon steel	—
	Rod end nut	Rolled steel	Zinc chromating

* Refer to pages 11 and 12 for accessory dimensions.

Theoretical Output

(Unit: N) 

Bore size [mm]	Width across flats [mm]	Operating direction	Piston area [mm ²]	Operating pressure [MPa]								
				0.2	0.3	0.4	0.5	0.6	0.7	0.8	0.9	1.0
32	12.2	OUT	804	161	241	322	402	482	563	643	724	804
		IN	675	135	203	270	338	405	473	540	608	675
40	14.2	OUT	1257	251	377	503	629	754	880	1006	1131	1257
		IN	1082	216	325	433	541	649	757	866	974	1082
50	19	OUT	1963	393	589	785	982	1178	1374	1570	1767	1963
		IN	1651	330	495	660	826	991	1156	1321	1486	1651
63	19	OUT	3117	623	935	1247	1559	1870	2182	2494	2805	3117
		IN	2804	561	841	1122	1402	1682	1963	2243	2524	2804
80	23	OUT	5027	1005	1508	2011	2514	3016	3519	4022	4524	5027
		IN	4568	914	1370	1827	2284	2741	3198	3654	4111	4568
100	27	OUT	7854	1571	2356	3142	3927	4712	5498	6283	7069	7854
		IN	7223	1445	2167	2889	3612	4334	5056	5778	6501	7223

Theoretical output [N] = Pressure [MPa] x Piston area [mm²]

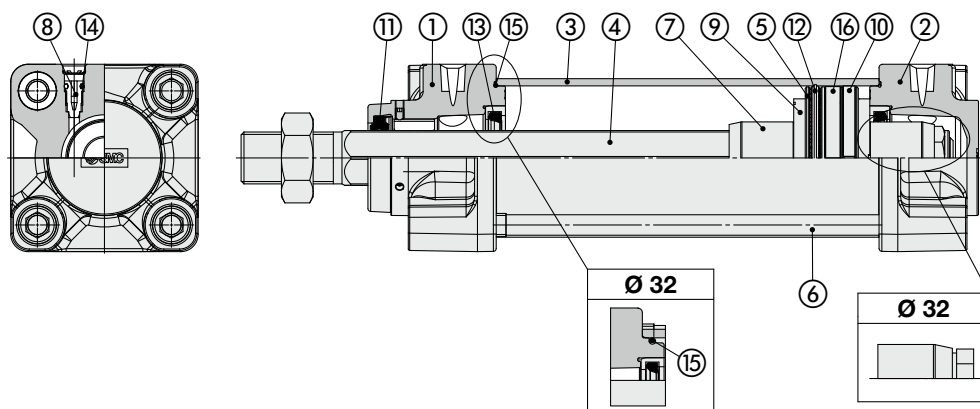
Weight

							[kg]
Bore size [mm]		32	40	50	63	80	100
Basic weight	Basic	0.47	0.64	1.18	1.34	2.56	3.55
	Axial foot	0.59	0.78	1.40	1.62	3.06	4.22
	Flange	0.76	1.01	1.63	2.13	4.01	5.38
	Single clevis	0.72	0.87	1.52	1.97	3.67	5.13
	Double clevis	0.73	0.91	1.61	2.13	3.96	5.40
	Trunnion	0.76	1.00	1.66	2.14	4.11	5.24
Additional weight per 50 mm of stroke	All mounting brackets	0.12	0.15	0.24	0.26	0.39	0.50
Additional weight for magnet	With auto switch (Built-in magnet)	0.01	0.01	0.01	0.02	0.02	0.03
Accessories	Clevis pivot bracket	0.19	0.19	0.41	0.41	1.13	1.13
	Trunnion pivot bracket (1 pc.)	0.09	0.21	0.21	0.40	0.40	0.82
	Single knuckle joint	0.15	0.23	0.26	0.26	0.60	0.83
	Double knuckle joint (with pin)	0.22	0.37	0.43	0.43	0.87	1.27
	Rod end	0.07	0.16	0.30	0.30	0.49	0.67

Calculation example)

MB2KB32-100 (Basic, Ø 32, 100 mm stroke)
 • Basic weight 0.47 (Basic, Ø 32)
 • Additional weight 0.12/50 mm stroke
 • Cylinder stroke 100 mm stroke
 0.47 + 0.12 x 100/50 = **0.71 kg**

Replacement Parts



Component Parts

No.	Description
1	Rod cover
2	Head cover
3	Cylinder tube
4	Piston rod
5	Piston
6	Tie-rod
7	Cushion ring
8	Cushion valve
9	Bumper
10	Wear ring
11	Rod seal
12	Piston seal
13	Cushion seal
14	Cushion valve seal
15	Cylinder tube gasket
16	Magnet

Replacement Parts/Seal Kit

Bore size [mm]	Kit no.	Contents
32	MB2K32-PS	Set of the nos. ⑨ (2 pcs.), ⑩ (1 pc.), ⑪ (1 pc.), ⑫ (1 pc.), ⑬ (2 pcs.), ⑮ (2 pcs.)
40	MB2K40-PS	
50	MB2K50-PS	
63	MB2K63-PS	
80	MB2K80-PS	
100	MB2K100-PS	

* Seal kits can be ordered using the seal kit part number corresponding to each bore size.

* Trunnion type should not be disassembled.

* The seal kit includes a grease pack (10 g for Ø 32 to Ø 50, 20 g for Ø 63 and Ø 80, 30 g for Ø 100).

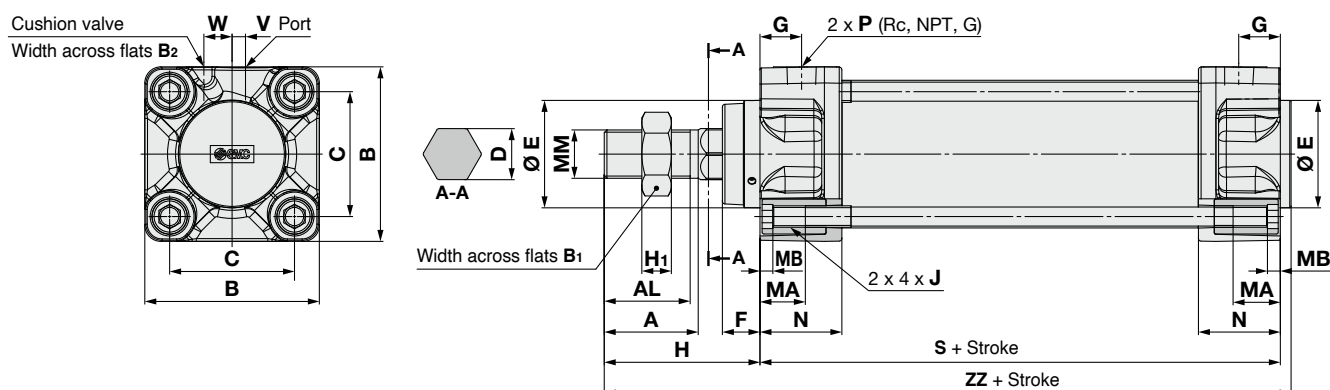
Order with the following part number when only the grease pack is needed.

Grease pack part number: GR-S-010 (10 g), GR-S-020 (20 g)

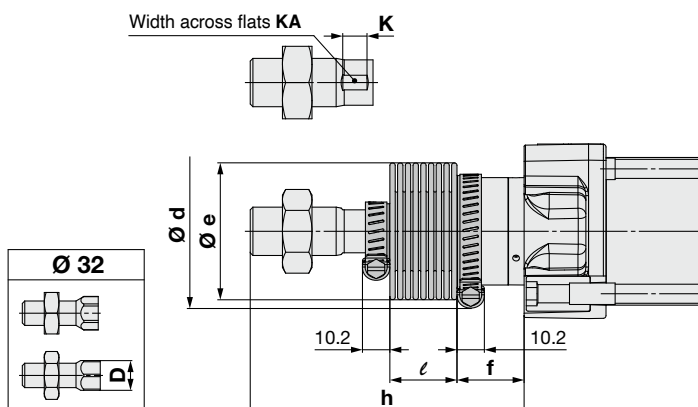
* Refer to the operation manual for seal replacement instructions.

Standard

Basic: (M□B2KB)



With rod boot



Bore size [mm]	A	AL	B	B ₁	B ₂	C	D	E	F	G	H	H ₁	J	MA	MB	MM	N	P	S	V	W	ZZ
32	22	19.5	46	17	2	32.5	12.2	30	13	13	47	6	M6 x 1	16	4	M10 x 1.25	27	1/8	84	4	7	135
40	30	27	52	22	2	38	14.2	35	13	14	51	8	M6 x 1	16	4	M14 x 1.5	27	1/4	84	4	10	139
50	35	32	65	27	2	46.5	19	40	14	15.5	58	11	M8 x 1.25	16	5	M18 x 1.5	31	1/4	94	5	10.5	156
63	35	32	75	27	2	56.5	19	45	14	16.5	58	11	M8 x 1.25	16	5	M18 x 1.5	31	3/8	94	9	12	156
80	40	37	95	32	3	72	23	45	20	19	72	13	M10 x 1.5	16	5	M22 x 1.5	38	3/8	114	11.5	12	190
100	40	37	114	41	3	89	27	55	20	19	72	16	M10 x 1.5	16	5	M26 x 1.5	38	1/2	114	17	13	190

With Rod Boot

Bore size [mm]	K	KA	d	e	f	ℓ									
						1 to 50	51 to 100	101 to 150	151 to 200	201 to 300	301 to 400	401 to 500	501 to 600	601 to 700	701 to 800
32	—	—	54	36	23	12.5	25	37.5	50	75	100	125	—	—	—
40	9	12	56	41	23	12.5	25	37.5	50	75	100	125	—	—	—
50	9	16	64	51	25	12.5	25	37.5	50	75	100	125	150	—	—
63	9	16	64	51	25	12.5	25	37.5	50	75	100	125	150	—	—
80	11	18	68	56	29	12.5	25	37.5	50	75	100	125	150	175	200
100	12	21	76	61	29	12.5	25	37.5	50	75	100	125	150	175	200

Bore size [mm]	h									
	1 to 50	51 to 100	101 to 150	151 to 200	201 to 300	301 to 400	401 to 500	501 to 600	601 to 700	701 to 800
32	73	86	98	111	136	161	186	—	—	—
40	81	94	106	119	144	169	194	—	—	—
50	89	102	114	127	152	177	202	227	—	—
63	89	102	114	127	152	177	202	227	—	—
80	101	114	126	139	164	189	214	239	264	289
100	101	114	126	139	164	189	214	239	264	289

* The dimensions for each mounting type are the same as those for standard model (double acting, single rod).

Air Cylinder: Non-rotating Rod Type Double Acting, Double Rod

MB2KW Series

Ø 32, Ø 40, Ø 50, Ø 63, Ø 80, Ø 100

RoHS

How to Order

MB2KW L 32 - 150

With auto switch **MDB2KW L 32 - 150 - M9BW**

With auto switch
(Built-in magnet)

Mounting

B	Basic
L	Axial foot
F	Flange
T	Trunnion

* The trunnion type is mounted before shipment.
* Other mounting brackets are shipped together with the product.

Bore size

32	32 mm
40	40 mm
50	50 mm
63	63 mm
80	80 mm
100	100 mm

Port thread type

—	Rc
TN	NPT
TF	G

Cylinder stroke [mm]
Refer to page 26 for standard strokes.

Auto switch

—	Without auto switch
---	---------------------

* For applicable auto switches, refer to the table below.

Number of auto switches

—	2
S	1
3	3
n	n

Suffix (Rod boot)

—	None
J	Nylon tarpaulin (One end)
JJ	Nylon tarpaulin (Both ends)
K	Heat-resistant tarpaulin (One end)
KK	Heat-resistant tarpaulin (Both ends)

* For details, refer to page 26.

Applicable Auto Switches / Refer to the catalogue on www.smc.eu for further information on auto switches.

Type	Special function	Electrical entry	Indicator light	Wiring (Output)	Load voltage		Auto switch model		Lead wire length [m]					Pre-wired connector	Applicable load		
					DC	AC	Perpendicular	In-line	0.5 (—)	1 (M)	3 (L)	5 (Z)	None (N)				
Solid state auto switch	— — —	Grommet	Yes	3-wire (NPN)	24 V	5 V,	—	M9NV	M9N	●	●	●	○	—	○	IC circuit	Relay, PLC
	Diagnostic indication (2-colour indicator)	3-wire (PNP)		12 V		M9PV		M9P	●	●	●	○	—	○			
		2-wire		12 V		M9BV		M9B	●	●	●	○	—	○			
		Water resistant (2-colour indicator)		3-wire (NPN)		5 V,		M9NWV	M9NW	●	●	●	○	—	○	IC circuit	
	3-wire (PNP)			12 V		M9PWV		M9PW	●	●	●	○	—	○			
	2-wire			12 V		M9BWW		M9BW	●	●	●	○	—	○	—		
		3-wire (NPN)		5 V,		M9NAV*1		M9NA*1	○	○	●	○	—	○	IC circuit		
		3-wire (PNP)		12 V		M9PAV*1		M9PA*1	○	○	●	○	—	○		—	
		2-wire		12 V		M9BAV*1		M9BA*1	○	○	●	○	—	○		—	
Reed auto switch	— — —	Grommet	Yes	3-wire (NPN equivalent)	—	5 V	—	A96V	A96	●	●	●	●	—	○	IC circuit	—
			No	2-wire	24 V	12 V	100 V	A93V	A93	●	●	●	●	—	○*2	—	Relay, PLC
							100 V or less	A90V	A90	●	●	●	●	—	○*2	IC circuit	—

*1 Water-resistant type auto switches can be mounted on the above models, but SMC cannot guarantee water resistance.

A water-resistant type cylinder is recommended for use in an environment which requires water resistance.

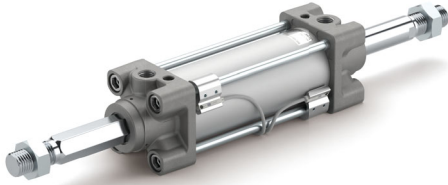
*2 The load voltage used is 24 VDC.

* Lead wire length symbols: 0.5 m..... — (Example) M9NW 3 m..... L (Example) M9NWL
1 m..... M (Example) M9NWM 5 m..... Z (Example) M9NWL

* Auto switches marked with a "○" are produced upon receipt of order.

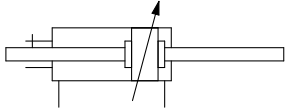
* Auto switches are shipped together with the product but do not come assembled. (However, the auto switch mounting brackets are assembled before shipment.)

* There are applicable auto switches other than those listed above. For details, refer to page 32.



Symbol

Double acting type, Air cushion



Specifications

Bore size [mm]	32	40	50	63	80	100
Action	Double acting, Double rod					
Fluid	Air					
Proof pressure	1.5 MPa					
Max. operating pressure	1.0 MPa					
Min. operating pressure	0.05 MPa					
Ambient and fluid temperatures	Without auto switch: -10 to 70 °C With auto switch: -10 to 60 °C (No freezing)					
Lubrication	Not required (Non-lube)					
Piston speed	50 to 1000 mm/s					
Stroke length tolerance	Up to 500: $^{+2.0}_0$, 501 to 800: $^{+2.4}_0$					
Cushion*1	Air cushion + Rubber bumper					
Mounting	Basic, Axial foot, Flange, Trunnion					

*1 Kinetic energy is identical to that of the double acting, single rod type.

* Stroke length tolerance does not include the amount of bumper change. There will be 0.1 to 1.0 mm of bumper distortion depending on the supply pressure.

Air Cushion Stroke

Bore size [mm]	Effective cushion length [mm]
32	17
40	17
50	17
63	17
80	26
100	26

Refer to pages 30 to 36 for cylinders with auto switches.

- Auto Switch Proper Mounting Position (Detection at stroke end) and Mounting Height
- Minimum Stroke for Auto Switch Mounting
- Auto Switch Mounting Brackets/Part Nos.
- Operating Range

Strokes

Bore size [mm]	Standard stroke [mm]
32	50, 75, 100, 125, 150, 175, 200, 250, 300, 350, 400, 450, 500
40	50, 75, 100, 125, 150, 175, 200, 250, 300, 350, 400, 450, 500
50	50, 75, 100, 125, 150, 175, 200, 250, 300, 350, 400, 450, 500, 600
63	50, 75, 100, 125, 150, 175, 200, 250, 300, 350, 400, 450, 500, 600
80	50, 75, 100, 125, 150, 175, 200, 250, 300, 350, 400, 450, 500, 600, 700, 800
100	50, 75, 100, 125, 150, 175, 200, 250, 300, 350, 400, 450, 500, 600, 700, 800

* The manufacturing of intermediate strokes is possible. (Spacers are not used.)

* Strokes exceeding the standard stroke range are available as a special order.

* Using a stroke of a length which is smaller than the effective cushion length may result in reduced air cushion performance.

Rod Boot Material

Symbol	Material	Max. ambient temp.
J	Nylon tarpaulin	70 °C
K	Heat-resistant tarpaulin	110 °C*1

*1 Max. ambient temperature for rod boot itself

* The rod boot replacement part numbers are listed in the "Maintenance Parts List." Refer to the **catalogue** on www.smc.eu.

Mounting Brackets/Order Nos.

Bore size [mm]	32	40	50	63	80	100
Axial foot	MB-L03	MB-L04	MB-L05	MB-L06	MB-L08	MB-L10
Flange	MB-F03	MB-F04	MB-F05	MB-F06	MB-F08	MB-F10

* It is possible to order the mounting brackets separately. Refer to each bore size in the table above for part numbers.

* When ordering axial foot brackets, order 2 pieces per cylinder.

Mounting Brackets, Accessories/Material, Surface Treatment

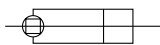
Segment	Description	Material	Surface treatment (Ø 32 to Ø 100)
Mounting brackets	Axial foot	Rolled steel	Zinc chromating
	Flange	Cast iron	Metallic silver colour painting
	Trunnion	Cast iron	Metallic silver colour painting after zinc chromating
Accessories	Single knuckle joint	Free-cutting steel	Zinc chromating
	Double knuckle joint	Cast iron	Metallic silver colour painting
	Rod end	Carbon steel	Zinc plating
	Knuckle joint pin Clevis pin	Carbon steel	—
	Rod end nut	Rolled steel	Zinc chromating

* Refer to pages 11 and 12 for accessory dimensions.

MB2KW Series

Theoretical Output

(Unit: N) OUT ←
IN →



Bore size [mm]	Rod size [mm]	Operating direction	Piston area [mm ²]	Operating pressure [MPa]								
	Width across flats [mm]			0.2	0.3	0.4	0.5	0.6	0.7	0.8	0.9	1.0
32	12	OUT	691	138	207	276	346	415	484	553	622	691
	12.2	IN	675	135	203	270	338	405	473	540	608	675
40	16	OUT	1056	211	317	422	528	634	739	845	950	1056
	14.2	IN	1082	216	325	433	541	649	757	866	974	1082
50	20	OUT	1649	330	495	660	825	989	1154	1319	1484	1649
	19	IN	1651	330	495	660	826	991	1156	1321	1486	1651
63	20	OUT	2803	561	841	1121	1402	1682	1962	2242	2523	2803
	19	IN	2804	561	841	1122	1402	1682	1963	2243	2524	2804
80	25	OUT	4536	907	1361	1814	2268	2722	3175	3629	4082	4536
	23	IN	4568	914	1370	1827	2284	2741	3198	3654	4111	4568
100	30	OUT	7147	1429	2144	2859	3574	4288	5003	5718	6432	7147
	27	IN	7223	1445	2167	2889	3612	4334	5056	5778	6501	7223

* Theoretical output [N] = Pressure [MPa] x Piston area [mm²]

Weight

Bore size [mm]		32	40	50	63	80	100
Basic weight	Basic	0.52	0.73	1.33	1.52	2.84	4.05
	Axial foot	0.64	0.87	1.55	1.80	3.34	4.71
	Flange	0.81	1.10	1.78	2.31	4.29	5.88
	Trunnion	0.81	1.09	1.81	2.32	4.39	5.74
Additional weight per 50 mm of stroke	All mounting brackets	0.16	0.23	0.37	0.38	0.60	0.79
Additional weight for magnet	With auto switch (Built-in magnet)	0.01	0.01	0.01	0.02	0.02	0.03
Accessories	Trunnion pivot bracket (1 pc.)	0.09	0.21	0.21	0.40	0.40	0.82
	Single knuckle joint	0.15	0.23	0.26	0.26	0.60	0.83
	Double knuckle joint (with pin)	0.22	0.37	0.43	0.43	0.87	1.27
	Rod end	0.07	0.16	0.30	0.30	0.49	0.67

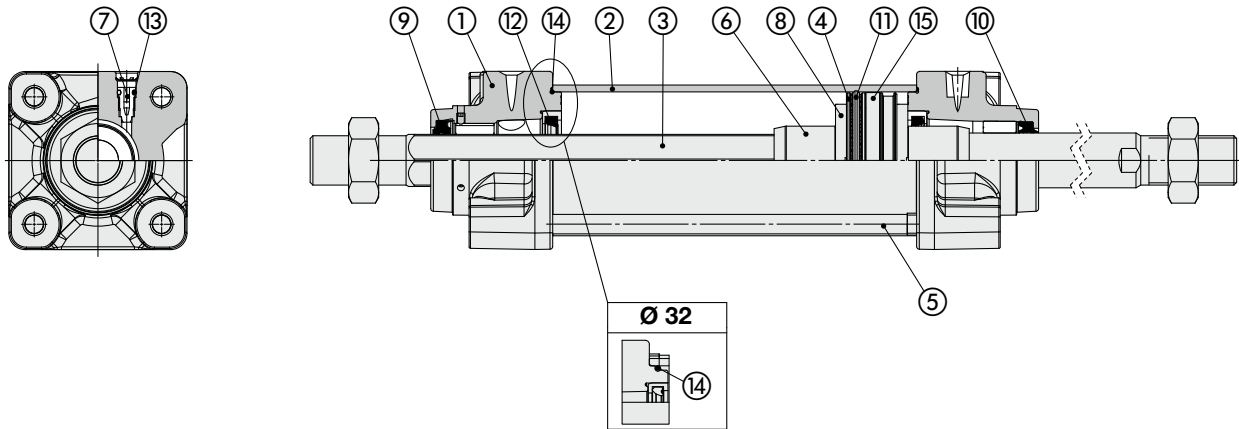
Calculation example)

MB2KWB32-100 (Basic, Ø 32, 100 mm stroke)

- Basic weight 0.52 (Basic, Ø 32)
- Additional weight 0.16/50 mm stroke
- Cylinder stroke 100 mm stroke

$$0.52 + 0.16 \times 100/50 = \mathbf{0.84 \text{ kg}}$$

Replacement Parts



Component Parts

No.	Description
1	Rod cover
2	Cylinder tube
3	Piston rod
4	Piston
5	Tie-rod
6	Cushion ring
7	Cushion valve
8	Bumper
9	Rod seal A
10	Rod seal B
11	Piston seal
12	Cushion seal
13	Cushion valve seal
14	Cylinder tube gasket
15	Magnet

Replacement Parts/Seal Kit

Bore size [mm]	Kit no.	Contents
32	MB2KW32-PS	Set of the nos. ⑨ (2 pcs.), ⑩ (1 pc.), ⑪ (1 pc.), ⑫ (2 pcs.), ⑬ (2 pcs.)
40	MB2KW40-PS	
50	MB2KW50-PS	
63	MB2KW63-PS	
80	MB2KW80-PS	
100	MB2KW100-PS	

* Seal kits can be ordered using the seal kit part number corresponding to each bore size.

* Trunnion type should not be disassembled.

* The seal kit includes a grease pack (10 g for Ø 32 to Ø 50, 20 g for Ø 63 and Ø 80, 30 g for Ø 100).

Order with the following part number when only the grease pack is needed.

Grease pack part number: GR-S-010 (10 g), GR-S-020 (20 g)

MB2 Series

D-M9 D-A9

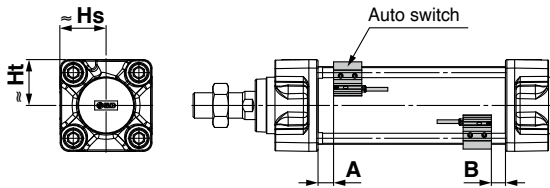
Auto Switch Mounting



Auto Switch Proper Mounting Position (Detection at stroke end) and Mounting Height

<Tie-rod mounting>

D-M9□/M9□V
D-M9□E/M9□EV
D-M9□W/M9□WV
D-M9□A/M9□AV
D-A9□/A9□V



Auto Switch Proper Mounting Position (Standard, Double rod)

Bore size	Auto switch model		[mm]	
	D-M9□ D-M9□V D-M9□E D-M9□EV D-M9□W D-M9□WV D-M9□A D-M9□AV	D-A9□ D-A9□V	A	B
32	10	9.5	6	5.5
40	9.5	9	5.5	5
50	11	10	7	6
63	11	10	7	6
80	14.5	12.5	10.5	8.5
100	14.5	12.5	10.5	8.5
125	16	16	12	12

Auto Switch Mounting Height (Standard, Double rod)

[mm]

Bore size	Auto switch model	D-M9□ D-M9□E D-M9□W D-M9□A D-A9□		D-A9□V		D-M9□V D-M9□EV D-M9□WV D-M9□AV	
		Hs	Ht	Hs	Ht	Hs	Ht
32		24.5	23	27.5	23	30.5	23
40		28.5	25.5	31.5	25.5	34	25.5
50		33.5	31	36	31	38.5	31
63		38.5	36	40.5	36	43	36
80		46.5	45	49	45	52	45
100		54	53.5	57	53.5	59.5	53.5
125		65.5	64.5	68.5	64.5	71	64.5

Minimum Stroke for Auto Switch Mounting

Mounting Brackets Except Trunnion

n: Number of auto switches [mm]

Auto switch model	Number of auto switches	Ø 32	Ø 40	Ø 50	Ø 63	Ø 80	Ø 100	Ø 125
D-M9□ D-M9□E D-M9□W D-M9□A	2 (Different surfaces, Same surface) 1	15						
	n	$15 + 40 \frac{(n-2)}{2}$ (n = 2, 4, 6, 8...)*1						
D-M9□V D-M9□EV D-M9□WV D-M9□AV	2 (Different surfaces, Same surface) 1	10						
	n	$10 + 30 \frac{(n-2)}{2}$ (n = 2, 4, 6, 8...)*1						
D-A9□	2 (Different surfaces, Same surface) 1	15						
	n	$15 + 40 \frac{(n-2)}{2}$ (n = 2, 4, 6, 8...)*1						
D-A9□V	2 (Different surfaces, Same surface) 1	10						
	n	$10 + 30 \frac{(n-2)}{2}$ (n = 2, 4, 6, 8...)*1						

*1 When "n" is an odd number, an even number that is one larger than the odd number is to be used for the calculation.

Minimum Stroke for Auto Switch Mounting

Trunnion

n: Number of auto switches [mm]

Auto switch model	Number of auto switches	Ø 32	Ø 40	Ø 50	Ø 63	Ø 80	Ø 100	Ø 125
D-M9□ D-M9□E D-M9□W	2 (Different surfaces, Same surface) 1	75	80	85	90	95	105	
	n	$75 + 40 \frac{(n-4)}{2}$ (n = 4, 8, 12, 16...)*1	$80 + 40 \frac{(n-4)}{2}$ (n = 4, 8, 12, 16...)*1	$85 + 40 \frac{(n-4)}{2}$ (n = 4, 8, 12, 16...)*1	$90 + 40 \frac{(n-4)}{2}$ (n = 4, 8, 12, 16...)*1	$95 + 40 \frac{(n-4)}{2}$ (n = 4, 8, 12, 16...)*1	$105 + 40 \frac{(n-4)}{2}$ (n = 4, 8, 12, 16...)*1	
D-M9□V D-M9□EV D-M9□WV	2 (Different surfaces, Same surface) 1	50	55	60	65	70	80	
	n	$50 + 30 \frac{(n-4)}{2}$ (n = 4, 8, 12, 16...)*1	$55 + 30 \frac{(n-4)}{2}$ (n = 4, 8, 12, 16...)*1	$60 + 30 \frac{(n-4)}{2}$ (n = 4, 8, 12, 16...)*1	$65 + 30 \frac{(n-4)}{2}$ (n = 4, 8, 12, 16...)*1	$70 + 30 \frac{(n-4)}{2}$ (n = 4, 8, 12, 16...)*1	$80 + 30 \frac{(n-4)}{2}$ (n = 4, 8, 12, 16...)*1	
D-M9□A	2 (Different surfaces, Same surface) 1	80	85	90	95	100	110	
	n	$80 + 40 \frac{(n-4)}{2}$ (n = 4, 8, 12, 16...)*1	$85 + 40 \frac{(n-4)}{2}$ (n = 4, 8, 12, 16...)*1	$90 + 40 \frac{(n-4)}{2}$ (n = 4, 8, 12, 16...)*1	$95 + 40 \frac{(n-4)}{2}$ (n = 4, 8, 12, 16...)*1	$100 + 40 \frac{(n-4)}{2}$ (n = 4, 8, 12, 16...)*1	$110 + 40 \frac{(n-4)}{2}$ (n = 4, 8, 12, 16...)*1	
D-M9□AV	2 (Different surfaces, Same surface) 1	55	60	65	70	75	85	
	n	$55 + 30 \frac{(n-4)}{2}$ (n = 4, 8, 12, 16...)*1	$60 + 30 \frac{(n-4)}{2}$ (n = 4, 8, 12, 16...)*1	$65 + 30 \frac{(n-4)}{2}$ (n = 4, 8, 12, 16...)*1	$70 + 30 \frac{(n-4)}{2}$ (n = 4, 8, 12, 16...)*1	$75 + 30 \frac{(n-4)}{2}$ (n = 4, 8, 12, 16...)*1	$85 + 30 \frac{(n-4)}{2}$ (n = 4, 8, 12, 16...)*1	
D-A9□	2 (Different surfaces, Same surface) 1	70	75	80	85	95	100	
	n	$70 + 40 \frac{(n-4)}{2}$ (n = 4, 8, 12, 16...)*1	$75 + 40 \frac{(n-4)}{2}$ (n = 4, 8, 12, 16...)*1	$80 + 40 \frac{(n-4)}{2}$ (n = 4, 8, 12, 16...)*1	$85 + 40 \frac{(n-4)}{2}$ (n = 4, 8, 12, 16...)*1	$95 + 40 \frac{(n-4)}{2}$ (n = 4, 8, 12, 16...)*1	$100 + 40 \frac{(n-4)}{2}$ (n = 4, 8, 12, 16...)*1	
D-A9□V	2 (Different surfaces, Same surface) 1	45	50	55	60	70	75	
	n	$45 + 30 \frac{(n-4)}{2}$ (n = 4, 8, 12, 16...)*1	$50 + 30 \frac{(n-4)}{2}$ (n = 4, 8, 12, 16...)*1	$55 + 30 \frac{(n-4)}{2}$ (n = 4, 8, 12, 16...)*1	$60 + 30 \frac{(n-4)}{2}$ (n = 4, 8, 12, 16...)*1	$70 + 30 \frac{(n-4)}{2}$ (n = 4, 8, 12, 16...)*1	$75 + 30 \frac{(n-4)}{2}$ (n = 4, 8, 12, 16...)*1	

*1 When "n" is an odd number, a multiple of 4 that is larger than the odd number is to be used for the calculation.

Auto Switch Mounting Brackets/Part Nos.

Auto switch model	Bore size [mm]						
	Ø 32	Ø 40	Ø 50	Ø 63	Ø 80	Ø 100	Ø 125
D-M9□/M9□V D-M9□E/M9□EV D-M9□W/M9□WV D-M9□A/M9□AV D-A9□/A9□V	BMB5-032	BMB5-032	BA7-040	BA7-040	BA7-063	BA7-063	BA7-080

[Stainless Steel Mounting Screw]

The following stainless steel mounting screw kit (including set screws) is available. Use it in accordance with the operating environment. (Since the auto switch mounting bracket is not included, order it separately.)

BBA1: For D-M9/A9 types

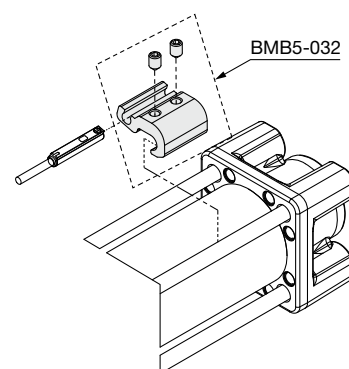
- * For details on the BBA1, refer to the "How to Mount and Move the Auto Switch" section in the **catalogue on www.smc.eu**.
- * When using the D-M 9 □A(V), do not use the steel set screws which are included with the auto switch mounting brackets above (BMB5-032, BA7-□□□). Order a stainless steel screw kit (BBA1) separately before use.

Operating Range

Auto switch model	Bore size [mm]						
	32	40	50	63	80	100	125
D-M9□/M9□V D-M9□E/M9□EV D-M9□W/M9□WV D-M9□A/M9□AV	4	4.5	4.5	4.5	5	6	7
D-A9□/A9□V	7	7.5	8.5	9.5	9.5	10.5	12

* Values which include hysteresis are for reference purposes only. They are not a guarantee (assuming approx. ±30 % dispersion) and may change substantially depending on the ambient environment.

<Mounting example for Ø 32, D-M9B>



MB2 Series

D-Y5/Y6/Y7/F5/J5/G39/K39/P3DWA/P4DW

D-A3/A44/A5/A6/Z7/Z80

Auto Switch Mounting



Other than the applicable auto switches listed in "How to Order," the following auto switches are also mountable. Refer to the **Web Catalog** for detailed specifications.

Type	Model	Electrical entry	Features
Solid state	D-Y69A, Y69B, Y7PV	Grommet (Perpendicular)	—
	D-Y7NWW, Y7PWV, Y7BWV		Diagnostic indication (2-colour indicator)
	D-F59, F5P, J59	Grommet (In-line)	—
	D-Y59A, Y59B, Y7P		Diagnostic indication (2-colour indicator)
	D-F59W, F5PW, J59W		Water resistant (2-colour indicator)
	D-Y7NW, Y7PW, Y7BW		With timer
	D-F5BA, Y7BA		With diagnostic output (2-colour indicator)
	D-F5NT		Magnetic field resistant (2-colour indicator)
	D-F59F		—
	D-P3DWA		—
	D-P4DW		—
	D-G39, K39	Terminal conduit	—
	D-A53, A54, A56, Z73, Z76	Grommet (In-line)	Without indicator light
	D-A64, A67, Z80		Diagnostic indication (2-colour indicator)
Reed	D-A59W	Terminal conduit	—
	D-A33, A34	DIN terminal	—
	D-A44		—

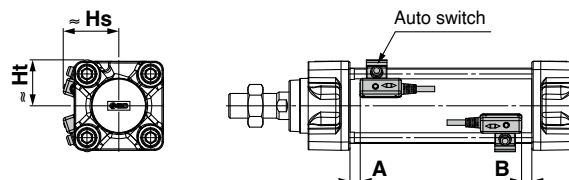
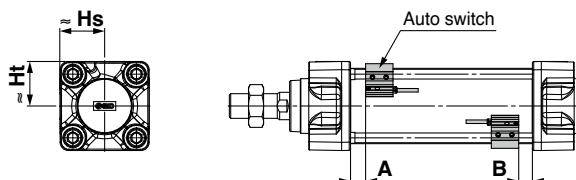
* Normally closed (NC = b contact) solid state auto switches (D-M9□E(V)/Y7G/Y7H) are also available. For details, refer to the **catalogue on www.smc.eu**.

Auto Switch Proper Mounting Position (Detection at stroke end) and Mounting Height

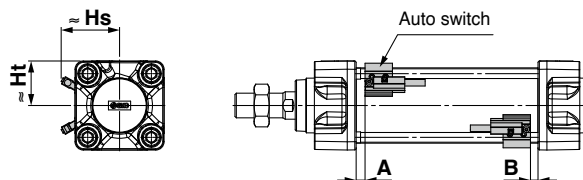
<Tie-rod mounting>

D-Y59□/Y69□/Y7P/Y7PV
D-Y7G/H
D-Y7□W/Y7□WV/Y7BA
D-Z7□/Z80

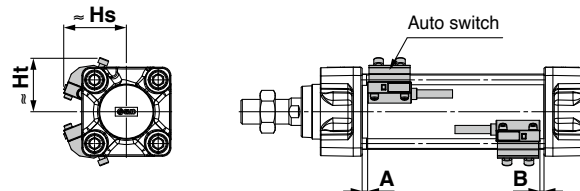
D-F5□/J59
D-F5□W/J59W/F5BA
D-F59F/F5NT



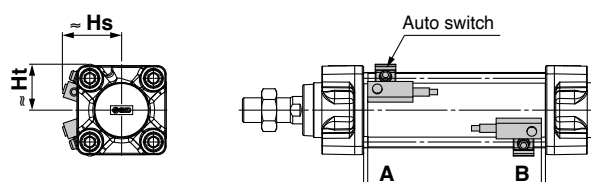
D-P3DWA



D-P4DW



D-A5□/A6□
D-A59W

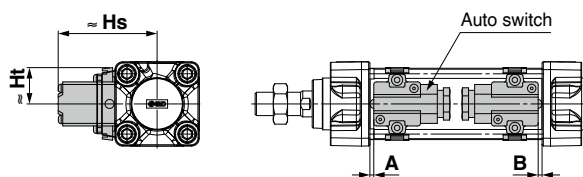


MB2 Series

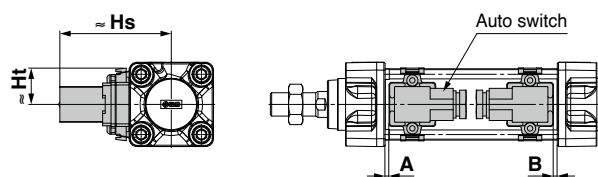
Auto Switch Proper Mounting Position (Detection at stroke end) and Mounting Height

<Band mounting>

D-G39/K39/A3□



D-A44



Auto Switch Proper Mounting Position (Standard, Double rod)

[mm]

Auto switch model Bore size [mm]	D-F5□ D-F5□W D-J59 D-J59W D-F5BA D-F59F		D-F5NT		D-A5□ D-A6□		D-A59W		D-G39 D-K39 D-A3□ D-A44		D-Y59□ D-Y69□ D-Y7P D-Y7PV D-Y7G/H D-Y7□W D-Y7□WV D-Y7BA D-Z7□ D-Z80		D-P3DWA		D-P4DW	
	A	B	A	B	A	B	A	B	A	B	A	B	A	B	A	B
32	6.5	6	11.5	11	0	0	4	3.5	0	0	3.5	3	5.5	5	3	2.5
40	6	5.5	11	10.5	0	0	3.5	3	0	0	3	2.5	5	4.5	2.5	2
50	7.5	6.5	12.5	11.5	1	0	5	4	1	0	4.5	3.5	6.5	5.5	4	3
63	7.5	6.5	12.5	11.5	1	0	5	4	1	0	4.5	3.5	6.5	5.5	4	3
80	11	9	16	14	4.5	2.5	8.5	6.5	4.5	2.5	8	6	10	8	7.5	5.5
100	11	9	16	14	4.5	2.5	8.5	6.5	4.5	2.5	8	6	10	8	7.5	5.5
125	12.5	12.5	17.5	17.5	6	6	10	10	6	6	9.5	9.5	11.5	11.5	9	9

Auto Switch Mounting Height (Standard, Double rod)

[mm]

Auto switch model Bore size [mm]	D-F5□ D-J59 D-F59F D-F5□W D-J59W D-F5BA D-F5NT		D-A5□ D-A6□ D-A59W		D-G39 D-K39 D-A3□		D-A44		D-Y59□ D-Y7P D-Y7G/H D-Y7□W D-Y7BA D-Z7□ D-Z80		D-Y69□ D-Y7PV D-Y7□WV		D-P3DWA		D-P4DW	
	Hs	Ht	Hs	Ht	Hs	Ht	Hs	Ht	Hs	Ht	Hs	Ht	Hs	Ht	Hs	Ht
32	32.5	25	35	24.5	67	27.5	77	27.5	25.5	23	26.5	23	38	31	38	31
40	36.5	27.5	38.5	27.5	71.5	27.5	81.5	27.5	29.5	26	30	26	39	25.5	42	33
50	41	34	43.5	34.5	77	—	87	—	33.5	31	34.5	31	43	31	46.5	39
63	46	39	48.5	39.5	83.5	—	93.5	—	39	36	40	36	48	36	51.5	44
80	52.5	46.5	55	46.5	92.5	—	103	—	47.5	45	48.5	45	56.5	45	58	51.5
100	59.5	55	62	55	103	—	113.5	—	55.5	53.5	56.5	53.5	64.5	53.5	65.5	60.5
125	70.5	66.5	71.5	66.5	115	—	125	—	67.5	65	68.5	65	76	64.5	76.5	72

Minimum Stroke for Auto Switch Mounting

Mounting Brackets Except Trunnion

n: Number of auto switches [mm]

Auto switch model	Number of auto switches	Ø 32	Ø 40	Ø 50	Ø 63	Ø 80	Ø 100	Ø 125
D-F5□ D-J59 D-F5□W D-J59W D-F59F D-F5BA	2 (Different surfaces, Same surface) 1	20						
	n	$20 + 55 \frac{(n-2)}{2}$ (n = 2, 4, 6, 8···)*1						
D-F5NT	2 (Different surfaces, Same surface) 1	25						
	n	$25 + 55 \frac{(n-2)}{2}$ (n = 2, 4, 6, 8···)*1						
D-A5□ D-A6□ D-A59W	2 (Different surfaces, Same surface) 1	20						
	n	$20 + 55 \frac{(n-2)}{2}$ (n = 2, 4, 6, 8···)*1						
D-G39 D-K39 D-A3□	2 (Different surfaces)	35						
	2 (Same surface)	100						
	n (Different surfaces)	$35 + 30 (n - 2)$ (n = 2, 3, 4···)						
	n (Same surface)	$100 + 100 (n - 2)$ (n = 2, 3, 4···)						
	1	10						
D-A44	2 (Different surfaces)	35						
	2 (Same surface)	55						
	n (Different surfaces)	$35 + 30 (n - 2)$ (n = 2, 3, 4···)						
	n (Same surface)	$55 + 50 (n - 2)$ (n = 2, 3, 4···)						
	1	10						
D-Y59□ D-Y7P D-Y7G/H D-Y7□W D-Z7□ D-Z80	2 (Different surfaces, Same surface) 1	15						
	n	$15 + 40 \frac{(n-2)}{2}$ (n = 2, 4, 6, 8···)*1						
D-Y69□ D-Y7PV D-Y7□WV	2 (Different surfaces, Same surface) 1	10						
	n	$10 + 30 \frac{(n-2)}{2}$ (n = 2, 4, 6, 8···)*1						
D-Y7BA	2 (Different surfaces, Same surface) 1	20						
	n	$20 + 45 \frac{(n-2)}{2}$ (n = 2, 4, 6, 8···)*1						
D-P3DWA	2 (Different surfaces, Same surface) 1	20				15		
	n	$20 + 50 \frac{(n-2)}{2}$ (n = 2, 4, 6, 8···)*1				$15 + 50 \frac{(n-2)}{2}$ (n = 2, 4, 6, 8···)*1		
D-P4DW	2 (Different surfaces, Same surface) 1	30				25		
	n	$30 + 65 \frac{(n-2)}{2}$ (n = 2, 4, 6, 8···)*1				$25 + 65 \frac{(n-2)}{2}$ (n = 2, 4, 6, 8···)*1		

*1 When "n" is an odd number, an even number that is one larger than the odd number is to be used for the calculation.

Minimum Stroke for Auto Switch Mounting

Trunnion

n: Number of auto switches [mm]

Auto switch model	Number of auto switches	Ø 32	Ø 40	Ø 50	Ø 63	Ø 80	Ø 100	Ø 125
D-F5□ D-J59 D-F5□W D-J59W D-F59F D-F5BA	2 (Different surfaces, Same surface) 1	90	95		110	115	120	130
	n	$90 + 55 \frac{(n-4)}{2}$ (n = 4, 8, 12, 16···)*2	$95 + 55 \frac{(n-4)}{2}$ (n = 4, 8, 12, 16···)*2		$110 + 55 \frac{(n-4)}{2}$ (n = 4, 8, 12, 16···)*2	$115 + 55 \frac{(n-4)}{2}$ (n = 4, 8, 12, 16···)*2	$120 + 55 \frac{(n-4)}{2}$ (n = 4, 8, 12, 16···)*2	$130 + 55 \frac{(n-4)}{2}$ (n = 4, 8, 12, 16···)*2
D-F5NT	2 (Different surfaces, Same surface) 1	100	105		120	125	130	140
	n	$100 + 55 \frac{(n-4)}{2}$ (n = 4, 8, 12, 16···)*2	$105 + 55 \frac{(n-4)}{2}$ (n = 4, 8, 12, 16···)*2		$120 + 55 \frac{(n-4)}{2}$ (n = 4, 8, 12, 16···)*2	$125 + 55 \frac{(n-4)}{2}$ (n = 4, 8, 12, 16···)*2	$130 + 55 \frac{(n-4)}{2}$ (n = 4, 8, 12, 16···)*2	$140 + 55 \frac{(n-4)}{2}$ (n = 4, 8, 12, 16···)*2
D-A5□ D-A6□	2 (Different surfaces, Same surface) 1	60		85	105	110		115
	n	$60 + 55 \frac{(n-4)}{2}$ (n = 4, 8, 12, 16···)*2		$85 + 55 \frac{(n-4)}{2}$ (n = 4, 8, 12, 16···)*2	$105 + 55 \frac{(n-4)}{2}$ (n = 4, 8, 12, 16···)*2	$110 + 55 \frac{(n-4)}{2}$ (n = 4, 8, 12, 16···)*2		$115 + 55 \frac{(n-4)}{2}$ (n = 4, 8, 12, 16···)*2
D-A59W	2 (Different surfaces, Same surface) 1	70		90	110	115	120	125
	n	$70 + 55 \frac{(n-4)}{2}$ (n = 4, 8, 12, 16···)*2		$90 + 55 \frac{(n-4)}{2}$ (n = 4, 8, 12, 16···)*2	$110 + 55 \frac{(n-4)}{2}$ (n = 4, 8, 12, 16···)*2	$115 + 55 \frac{(n-4)}{2}$ (n = 4, 8, 12, 16···)*2	$120 + 55 \frac{(n-4)}{2}$ (n = 4, 8, 12, 16···)*2	$125 + 55 \frac{(n-4)}{2}$ (n = 4, 8, 12, 16···)*2
D-G39 D-K39 D-A3□	2 (Different surfaces)	60	65		75	80	85	90
	2 (Same surface)	100						
	n (Different surfaces)	$60 + 30 (n-2)$ (n = 2, 4, 6, 8···)*1	$60 + 30 (n-2)$ (n = 2, 4, 6, 8···)*1		$75 + 30 (n-2)$ (n = 2, 4, 6, 8···)*1	$80 + 30 (n-2)$ (n = 2, 4, 6, 8···)*1	$85 + 30 (n-2)$ (n = 2, 4, 6, 8···)*1	$90 + 30 (n-2)$ (n = 2, 4, 6, 8···)*1
	n (Same surface)	$100 + 100 (n-2)$ (n = 2, 4, 6, 8···)*1						
	1	60	65		75	80	85	90
D-A44	2 (Different surfaces)	70	75		80		85	90
	2 (Same surface)							
	n (Different surfaces)	$70 + 30 (n-2)$ (n = 2, 4, 6, 8···)*1	$75 + 30 (n-2)$ (n = 2, 4, 6, 8···)*1		$80 + 30 (n-2)$ (n = 2, 4, 6, 8···)*1		$85 + 30 (n-2)$ (n = 2, 4, 6, 8···)*1	$90 + 30 (n-2)$ (n = 2, 4, 6, 8···)*1
	n (Same surface)	$70 + 50 (n-2)$ (n = 2, 4, 6, 8···)*1	$75 + 50 (n-2)$ (n = 2, 4, 6, 8···)*1		$80 + 50 (n-2)$ (n = 2, 4, 6, 8···)*1		$85 + 50 (n-2)$ (n = 2, 4, 6, 8···)*1	$90 + 50 (n-2)$ (n = 2, 4, 6, 8···)*1
	1	70	75		80		85	90
D-Y59□ D-Y7P D-Y7G/H D-Y7□W D-Z7□ D-Z80	2 (Different surfaces, Same surface) 1	80	85	90		95	100	105
	n	$80 + 40 \frac{(n-4)}{2}$ (n = 4, 8, 12, 16···)*2	$85 + 40 \frac{(n-4)}{2}$ (n = 4, 8, 12, 16···)*2	$90 + 40 \frac{(n-4)}{2}$ (n = 4, 8, 12, 16···)*2		$95 + 40 \frac{(n-4)}{2}$ (n = 4, 8, 12, 16···)*2	$100 + 40 \frac{(n-4)}{2}$ (n = 4, 8, 12, 16···)*2	$105 + 40 \frac{(n-4)}{2}$ (n = 4, 8, 12, 16···)*2
D-Y69□ D-Y7PV D-Y7□WV	2 (Different surfaces, Same surface) 1	60	65	70	75		85	
	n	$60 + 30 \frac{(n-4)}{2}$ (n = 4, 8, 12, 16···)*2	$65 + 30 \frac{(n-4)}{2}$ (n = 4, 8, 12, 16···)*2	$70 + 30 \frac{(n-4)}{2}$ (n = 4, 8, 12, 16···)*2	$75 + 30 \frac{(n-4)}{2}$ (n = 4, 8, 12, 16···)*2		$85 + 30 \frac{(n-4)}{2}$ (n = 4, 8, 12, 16···)*2	
D-Y7BA	2 (Different surfaces, Same surface) 1	85	90		100	105	110	115
	n	$85 + 45 \frac{(n-4)}{2}$ (n = 4, 8, 12, 16···)*2	$90 + 45 \frac{(n-4)}{2}$ (n = 4, 8, 12, 16···)*2		$100 + 45 \frac{(n-4)}{2}$ (n = 4, 8, 12, 16···)*2	$105 + 45 \frac{(n-4)}{2}$ (n = 4, 8, 12, 16···)*2	$110 + 45 \frac{(n-4)}{2}$ (n = 4, 8, 12, 16···)*2	$115 + 45 \frac{(n-4)}{2}$ (n = 4, 8, 12, 16···)*2
D-P3DWA	2 (Different surfaces, Same surface) 1	85	90		100	105	110	120
	n	$85 + 50 \frac{(n-4)}{2}$ (n = 4, 8, 12, 16···)*2	$90 + 50 \frac{(n-4)}{2}$ (n = 4, 8, 12, 16···)*2		$100 + 50 \frac{(n-4)}{2}$ (n = 4, 8, 12, 16···)*2	$105 + 50 \frac{(n-4)}{2}$ (n = 4, 8, 12, 16···)*2	$110 + 50 \frac{(n-4)}{2}$ (n = 4, 8, 12, 16···)*2	$120 + 50 \frac{(n-4)}{2}$ (n = 4, 8, 12, 16···)*2
D-P4DW	2 (Different surfaces, Same surface) 1	120		130		140		150
	n	$120 + 65 \frac{(n-4)}{2}$ (n = 4, 8, 12, 16···)*2		$130 + 65 \frac{(n-4)}{2}$ (n = 4, 8, 12, 16···)*2		$140 + 65 \frac{(n-4)}{2}$ (n = 4, 8, 12, 16···)*2		$150 + 65 \frac{(n-4)}{2}$ (n = 4, 8, 12, 16···)*2

*1 When "n" is an odd number, an even number that is one larger than the odd number is to be used for the calculation.

*2 When "n" is an odd number, a multiple of 4 that is larger than the odd number is to be used for the calculation.

Auto Switch Mounting Brackets/Part Nos.

Auto switch model	Bore size [mm]						
	Ø 32	Ø 40	Ø 50	Ø 63	Ø 80	Ø 100	Ø 125
D-A3□/A44 D-G39/K39	BMB2-032	BMB2-040	BMB1-050	BMB1-063	BMB1-080	BMB1-100	BS1-125
D-F5□/J59 D-F5□W/J59W D-F59F/F5BA D-F5NT D-A5□/A6□/A59W	BT-03	BT-03	BT-05	BT-05	BT-06	BT-06	BT-08
D-P3DWA	BA10-032S	BA10-040S	BA10-050S	BA10-050S	BA10-063S	BA10-063S	BA10-080S
D-P4DW	BMB3T-040	BMB3T-040	BMB3T-050	BMB3T-050	BMB3T-080	BMB3T-080	BAP2T-080
D-Y59□/Y69□ D-Y7P/Y7PV D-Y7G/H D-Y7□W/Y7□WV D-Y7BA D-Z7□/Z80	BMB4-032	BMB4-032	BMB4-050	BMB4-050	BA4-063	BA4-063	BA4-080

[Stainless Steel Mounting Screw]

The following stainless steel mounting screw kit (including set screws) is available. Use it in accordance with the operating environment. (Since the auto switch mounting bracket is not included, order it separately.)

BBA1: For D-A5/A6/F5/J5 types

* For details on the BBA1, refer to the "How to Mount and Move the Auto Switch" section in the **catalogue on www.smc.eu**.

The above stainless steel screws are used when a cylinder is shipped with the D-F5BA auto switch. When only one auto switch is shipped independently, the BBA1 is attached.

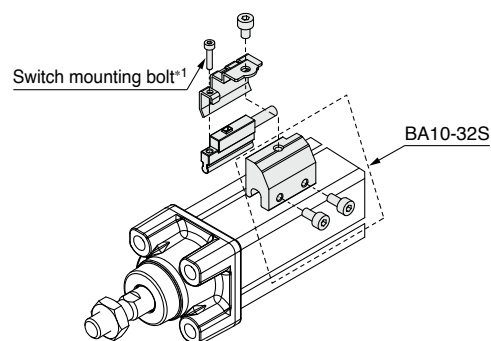
* When using the D-Y7BA, do not use the steel set screws which are included with the auto switch mounting brackets above (BMB4-□□□, BA4-□□□). Order a stainless steel screw kit (BBA1) separately before use.

Operating Range

Auto switch model	Bore size [mm]						
	32	40	50	63	80	100	125
D-Y59□/Y69□ D-Y7P/Y7□V D-Y7G/H D-Y7□W/Y7□WV D-Y7BA	5.5	5.5	7	7.5	6.5	5.5	7
D-F5□/J59 D-F5□W/J59W D-F5BA/F5NT D-F59F	3.5	4	4	4.5	4.5	4.5	5
D-G39/K39	9	9	9	10	10	11	11
D-P3DWA	3	4.5	4.5	5	5	5.5	6.5
D-P4DW	4	4	4	4.5	4	4.5	4.5
D-Z7□/Z80	7.5	8.5	7.5	9.5	9.5	10.5	13
D-A5□/A6□	9	9	10	11	11	11	10
D-A59W	13	13	13	14	14	15	17
D-A3□/A44	9	9	10	11	11	11	10

* Values which include hysteresis are for reference purposes only. They are not a guarantee (assuming approx. ±30% dispersion) and may change substantially depending on the ambient environment.




<Mounting example for Ø 32, D-P3DWA>



*1 The switch mounting bolt is supplied with the auto switch.

Safety Instructions

These safety instructions are intended to prevent hazardous situations and/or equipment damage. These instructions indicate the level of potential hazard with the labels of “Caution,” “Warning” or “Danger.” They are all important notes for safety and must be followed in addition to International Standards (ISO/IEC)¹⁾, and other safety regulations.

-  **Danger:** **Danger** indicates a hazard with a high level of risk which, if not avoided, will result in death or serious injury.
-  **Warning:** **Warning** indicates a hazard with a medium level of risk which, if not avoided, could result in death or serious injury.
-  **Caution:** **Caution** indicates a hazard with a low level of risk which, if not avoided, could result in minor or moderate injury.

- 1) ISO 4414: Pneumatic fluid power – General rules and safety requirements for systems and their components.
ISO 4413: Hydraulic fluid power – General rules and safety requirements for systems and their components.
IEC 60204-1: Safety of machinery – Electrical equipment of machines. (Part 1: General requirements)
ISO 10218-1: Robots and robotic devices - Safety requirements for industrial robots - Part 1: Robots.
etc.

Warning

1. The compatibility of the product is the responsibility of the person who designs the equipment or decides its specifications.

Since the product specified here is used under various operating conditions, its compatibility with specific equipment must be decided by the person who designs the equipment or decides its specifications based on necessary analysis and test results. The expected performance and safety assurance of the equipment will be the responsibility of the person who has determined its compatibility with the product. This person should also continuously review all specifications of the product referring to its latest catalogue information, with a view to giving due consideration to any possibility of equipment failure when configuring the equipment.

2. Only personnel with appropriate training should operate machinery and equipment.

The product specified here may become unsafe if handled incorrectly. The assembly, operation and maintenance of machines or equipment including our products must be performed by an operator who is appropriately trained and experienced.

3. Do not service or attempt to remove product and machinery/equipment until safety is confirmed.

1. The inspection and maintenance of machinery/equipment should only be performed after measures to prevent falling or runaway of the driven objects have been confirmed.
2. When the product is to be removed, confirm that the safety measures as mentioned above are implemented and the power from any appropriate source is cut, and read and understand the specific product precautions of all relevant products carefully.
3. Before machinery/equipment is restarted, take measures to prevent unexpected operation and malfunction.

4. SMC products cannot be used beyond their specifications. They are not developed, designed, and manufactured to be used under the following conditions or environments.

Use under such conditions or environments is not allowed.

1. Conditions and environments outside of the given specifications, or use outdoors or in a place exposed to direct sunlight.
2. Use for nuclear power, railways, aviation, space equipment, ships, vehicles, military application, equipment affecting human life, body, and property, combustion equipment, entertainment equipment, emergency shut-off circuits, press clutches, brake circuits, safety equipment, etc., and use for applications that do not conform to standard specifications such as catalogues and operation manuals.
3. Use for interlock circuits, except for use with double interlock such as installing a mechanical protection function in case of failure. Please periodically inspect the product to confirm that the product is operating properly.

Caution

SMC develops, designs, and manufactures products to be used for automatic control equipment, and provides them for peaceful use in manufacturing industries.

Use in non-manufacturing industries is not allowed.

Products SMC manufactures and sells cannot be used for the purpose of transactions or certification specified in the Measurement Act of each country.

The new Measurement Act prohibits use of any unit other than SI units in Japan.

Limited warranty and Disclaimer/Compliance Requirements

The product used is subject to the following “Limited warranty and Disclaimer” and “Compliance Requirements”. Read and accept them before using the product.

Limited warranty and Disclaimer

1. The warranty period of the product is 1 year in service or 1.5 years after the product is delivered, whichever is first.²⁾ Also, the product may have specified durability, running distance or replacement parts. Please consult your nearest sales branch.
2. For any failure or damage reported within the warranty period which is clearly our responsibility, a replacement product or necessary parts will be provided. This limited warranty applies only to our product independently, and not to any other damage incurred due to the failure of the product.
3. Prior to using SMC products, please read and understand the warranty terms and disclaimers noted in the specified catalogue for the particular products.

2) Suction cups (Vacuum pads) are excluded from this 1 year warranty.

A suction cup (vacuum pad) is a consumable part, so it is warranted for a year after it is delivered. Also, even within the warranty period, the wear of a product due to the use of the suction cup (vacuum pad) or failure due to the deterioration of rubber material are not allowed by the limited warranty.

Compliance Requirements

1. The use of SMC products with production equipment for the manufacture of weapons of mass destruction (WMD) or any other weapon is strictly prohibited.
2. The exports of SMC products or technology from one country to another are governed by the relevant security laws and regulations of the countries involved in the transaction. Prior to the shipment of a SMC product to another country, assure that all local rules governing that export are known and followed.

Safety Instructions

Be sure to read the “Handling Precautions for SMC Products” (M-E03-3) and “Operation Manual” before use.

SMC Corporation (Europe)

Austria	+43 (0)2262622800	www.smc.at	office.at@smc.com
Belgium	+32 (0)33551464	www.smc.be	info@smc.be
Bulgaria	+359 (0)2807670	www.smc.bg	sales.bg@smc.com
Croatia	+385 (0)13707288	www.smc.hr	sales.hr@smc.com
Czech Republic	+420 541424611	www.smc.cz	office.at@smc.com
Denmark	+45 70252900	www.smc.dk.com	smc.dk@smc.com
Estonia	+372 651 0370	www.smcee.ee	info.ee@smc.com
Finland	+358 207513513	www.smc.fi	smc.fi@smc.com
France	+33 (0)164761000	www.smc-france.fr	supportclient.fr@smc.com
Germany	+49 (0)61034020	www.smc.de	info.de@smc.com
Greece	+30 210 2717265	www.smchellas.gr	sales@smchellas.gr
Hungary	+36 23513000	www.smc.hu	office.hu@smc.com
Ireland	+353 (0)14039000	www.smcautomation.ie	technical.ie@smc.com
Italy	+39 03990691	www.smcitalia.it	mailbox.it@smc.com
Latvia	+371 67817700	www.smc.lv	info.lv@smc.com

Lithuania	+370 5 2308118	www.smclt.lt	info.lt@smc.com
Netherlands	+31 (0)205318888	www.smc.nl	info@smc.nl
Norway	+47 67129020	www.smc-norge.no	post.no@smc.com
Poland	+48 22 344 40 00	www.smc.pl	office.pl@smc.com
Portugal	+351 214724500	www.smc.eu	apoiocliente.pt@smc.com
Romania	+40 213205111	www.smcromania.ro	office.ro@smc.com
Russia	+7 (812)3036600	www.smc.eu	sales@smcru.com
Slovakia	+421 (0)413213212	www.smc.sk	sales.sk@smc.com
Slovenia	+386 (0)73885412	www.smc.si	office.si@smc.com
Spain	+34 945184100	www.smc.eu	post.es@smc.com
Sweden	+46 (0)86031240	www.smc.nu	order.se@smc.com
Switzerland	+41 (0)523963131	www.smc.ch	helpcenter.ch@smc.com
Turkey	+90 212 489 0 440	www.smcturkey.com.tr	satis.tr@smc.com
UK	+44 (0)845 121 5122	www.smc.uk	sales.gb@smc.com
South Africa	+27 10 900 1233	www.smcza.co.za	Sales.za@smc.com