



RoHS

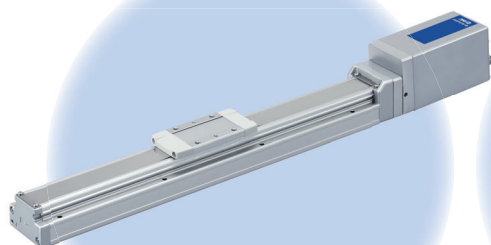
Teaching Box for Electric Actuator

**PC is not required.
Allows for electric actuator
and controller data setting
with a single unit**

- Compatible with stop switch units (option)
- Operates on power supplied from the electric actuator/controller



**Controller
setting**



**Electric actuator
EQ Series**
* Parallel I/O control



**Controller
JXC Series**

**Data editing
and saving**

**Alarm content
display**

Can be used to set another device by simply changing
the communication cable



With a handle for easy carrying



JX-T1 Series



Main Functions

SMC Main Menu

EQ Series JXC Series

Common Settings Maintenance

Select Language : 日本語 English

Version Information Project Data Version 0.24

EQ series screen examples

EQ operation screen

EQ Series Main Menu Communication error

Connecting ID No. 33

Device ID search/change Easy setup Alarm/Monitor

SMC corporation

Position setting screen

Double solenoid mode Read Write

Motion Drive Test JOG Inching Option Alarm/Monitor

Origin end mm Opp. end mm

Position 0.00 Position 0.00

Operating conditions screen

To opposite end

To end Read Write

☒ Positioning Cycle time 0.00 s

☐ Pushing

Acceleration mm/ss Speed mm/s Deceleration mm/ss

0 0 0

Test operation screen

Drive test

Current mode Double solenoid mode

☐ Servo ON ☐ Lock Enforce off

Position 0.00 mm Speed 0 mm/s Force 0 %

Warning screen

Maintenance Information

Parameter setup Backup Restore Version Information

Reset current value Read Write

No.	Status	Item (Unit)	Current
1		Total number of instructions (times)	
2		Cumulative mileage (m)	
3		Electrolytic Capacitor Warning	

Alarm screen

Active alarm

Alarm history Status monitor Alarm reset

No.	Code	Alarm messages
1		
2		
3		
4		

Status screen

StatusMonitor

Active alarm Alarm history ☐ Enforce mode

Position 0.00 mm Speed 0 mm/s Force 0 %

In PIN1 PIN2 PIN3 PIN4

Out PIN5 PIN6 PIN7 PIN8

Please use "Enforce mode" for wiring check. Be careful to change signal on the PLC.

JXC series screen examples

JXC operation screen

JXC Series Main Menu Communication error

Connecting ID No. 1

Device ID search/change Data Settings Alarm

SMC corporation

Step data screen

Data Settings Read Write

Parameters Drive Test Status monitor Teaching Information / Files

Copy Cut Paste Clear Get Position

No.	Operations	Move M	Speed mm/s	Position mm
0	Position	Absolute	0	0.00
1	Position	Absolute	0	0.00
2	Position	Absolute	0	0.00

Test operation screen

Drive Test

Add Delete Edit Move Up Move Down

Load File Save File RTN ORIG Stop Go

No.	Select	Driving information	Driving details
1			
2			
3			

Alarm confirmation screen

Active alarm

Alarm history Alarm reset

No.	Code	Alarm messages
1		
2		
3		
4		

Status screen

Status monitor 01

Monitor 2 Input Output

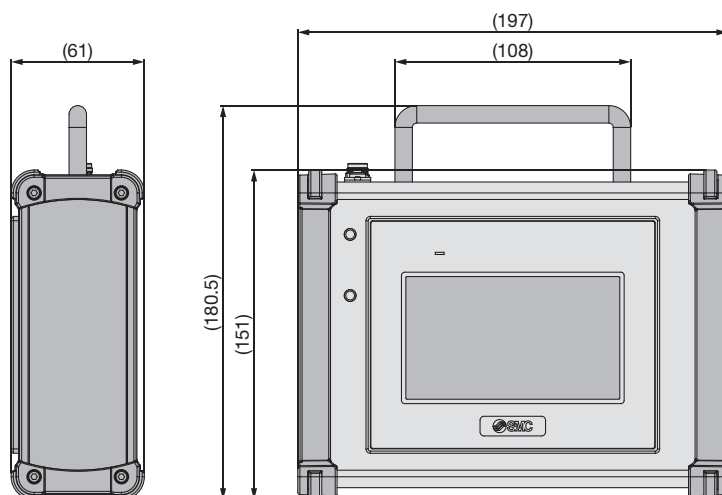
No.	Item	Monitor
1	Controller type	JXC91
2	Unit name	LEY16A-100
3	Step No.	0
4	Position mm	0.00

Specifications

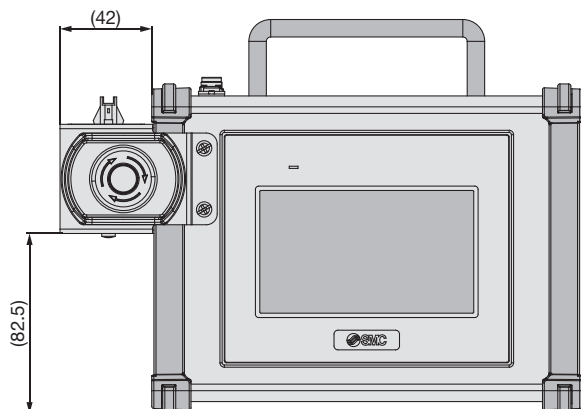
Items	Description
Display screen specifications	TFT color LCD/4.3 inches/488 x 272/16 million colors Analogue resistive touch panel
Power consumption	6.9 W or less
Operating temperature range	0 to 45 °C (No freezing)
Operating humidity range	10 to 90 %RH (No condensation)
Storage temperature range	-10 to 60 °C (No freezing)
Storage humidity range	10 to 90 %RH (No condensation)
Compatible languages	Japanese, English
Connected controller (Actuator)	EQ series parallel I/O type electric actuator (EQ□-B5, EQ□-B6) JXC□1/H/F series controller
Data saving	USB flash drive (FAT32)
Standards	CE/UKCA
Weight	Body only: 890 g With stop switch unit mounted: 1060 g
Enclosure	IP20

Dimensions

Teaching box (Body)
JX-T1



Stop switch unit mounting



How to Order

Teaching Box (Body)

JX-T1

Communication Cable (Option)

JX-T1C-E

Connected model

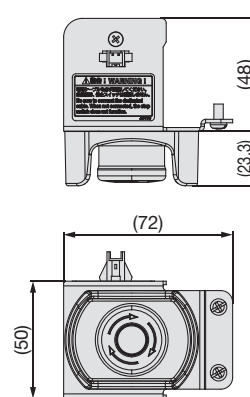
Symbol	Description
E	For EQ series connection
C	For JXC□1/H/F connection (Not compatible with the stop switch)
CG	For JXC□1/H/F connection (Compatible with the stop switch)

Stop Switch Unit (Option)

JX-T1U

* Mounting screw (2 pcs. included)

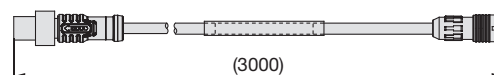
Stop switch unit
JX-T1U



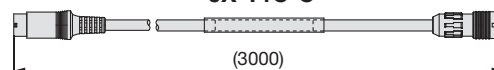
* Mounting screw (2 pcs. included)

- * When connecting the JXC series controller, if a stop switch unit is required, be sure to purchase it separately.
- * The customer must mount the stop switch unit on the teaching box.
- * When mounting the stop switch unit, the JX-TC-CG stop switch compatible communication cable is required. Be sure to purchase it separately.

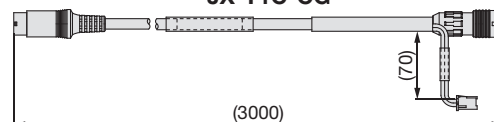
Communication cable for EQ series connection
JX-T1C-E



Communication cable for JXC series connection
(Not compatible with the stop switch)
JX-T1C-C



Communication cable for JXC series connection
(Compatible with the stop switch)
JX-T1C-CG

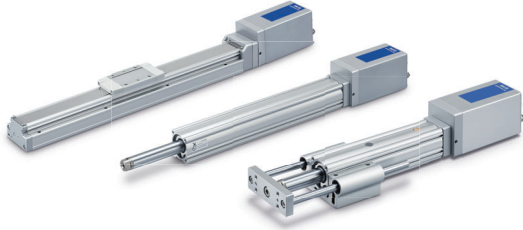


- * When mounting the stop switch unit, the JX-TC-CG stop switch compatible communication cable is required. Be sure to purchase it separately.

Related Products

e-Actuator Easy to Operate Integrated Controller Slider Type/Rod Type/Guide Rod Type

EQFS□H/EQY□H/EQYG□H Series



- Easy to set up, just like air equipment
Two position stop with no programming required
The cycle time can be set.
- Downsized with Integrated Controller, Wiring saving, Labor saving/Programless, Reduced adjustment time
- Annual CO₂ emissions: Max. 59 % reduction
5.8 kg - CO₂e/year (14.1)
* The numerical values vary depending on the operating conditions.

Step Data Input Type Controller

JXC51/61 Series



- The controller is already set with the data of the actuator.
(The actuator and controller are provided as a set.)

Step Motor Controller

JXCE□/9□/P□/D1/L□/M1 Series



- EtherCAT, EtherNet/IP™, PROFINET, DeviceNet®, IO-Link, and CC-Link compatible
- Two types of operation command: Step no. defined operation, Numerical data defined operation
- IO-Link communication can be performed.
- Controller with STO sub-function/JXC□F

Trademarks

EtherNet/IP® is a registered trademark of ODVA, Inc.

DeviceNet® is a registered trademark of ODVA, Inc.

EtherCAT® is registered trademark and patented technology, licensed by Beckhoff Automation GmbH, Germany.

 Safety Instructions	Be sure to read the “Handling Precautions for SMC Products” (M-E03-3) and “Operation Manual” before use.
--	--