



Expertise – Passion – Automation



**SIEMENS**

**A perfect fit  
with SMC**

## LEFS Series Ball screw



### YOUR EVERYDAY TRANSFER SOLUTION

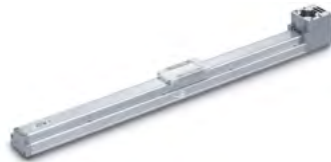
- Simple installation: possible to mount the main body without removing the external cover
- Motor mounting direction can be selected
- High-precision type, LEFSH
- Positioning repeatability:  $\pm 0,02\text{mm}$  (standard) ( $\pm 0,01\text{mm}$  with H-option)

Series	Stroke [mm]	Workload [kg]		Max. Speed [mm/s]	Servo motor specifications	
		Horizontal	Vertical		Rated torque (Nm)	Rated speed (Rpm)
LEFS(H)25□N□H□	50 to 800	10	4	1500	0,32	3000
LEFS(H)25□N□A□		20	8	900		
LEFS(H)25□N□B□			15	450		
LEFS(H)32□N□H□	50 to 1000	30	5	1500	0,64	3000
LEFS(H)32□N□A□		40	10	1000		
LEFS(H)32□N□B□		45	20	500		
LEFS(H)40□N□H□	150 to 1200	30	7	1500	1,3	3000
LEFS(H)40□N□A□		50	15	1000		
LEFS(H)40□N□B□		60	30	500		

Servo Drive System	Servo motor for drive system	SMC motor flange
V90	1FL6024	NZ
S210	1FK2102-1	NZ
S120	1FK7015	NX
V90	1FL6032	NZ
S210	1FK2□03-2	NZ
S120*	1FK7022	NX
V90	1FL6034	NZ
S210	1FK2□03-4	NZ
S120*	1FK7022	NX

\*In-line mounting only (D)

## LEFB Series Belt driven



- Positioning repeatability:  $\pm 0,06\text{mm}$ .
- Top or bottom motor mounting

Series	Stroke [mm]	Workload [kg]		Max. Speed [mm/s]	Servo motor specifications	
		Horizontal	Vertical		Rated torque (Nm)	Rated speed (Rpm)
LEFB25□N□S□	300 to 2000	5	not recommended	2000	0,32	3000
LEFB32□N□S□	300 to 2500	15		2000	0,64	3000
LEFB40□N□S□	300 to 3000	25		2000	1,3	3000

Servo Drive System	Servo motor for drive system	SMC motor flange
V90	1FL6024	NZ
S210	1FK2102-1	NZ
S120	1FK7015	NX
V90	1FL6032	NZ
S210	1FK2□03-2	NZ
S120	1FK7022	NX
V90	1FL6034	NZ
S210	1FK2□03-4	NZ
S120	1FK7022	NX

## LEJ Series Ball screw



### OUR MOST RIGID ELECTRIC ACTUATOR

- Low profile and low centre of gravity (58 or 73 mm height)
- Double axis linear guide construction provides high-precision and high rigidity
- Dustproof construction, as it is equipped with seal band as standard
- Positioning repeatability:  $\pm 0,02\text{mm}$  (standard) ( $\pm 0,01\text{mm}$  with H-option)

Series	Stroke [mm]	Workload [kg]		Max. Speed [mm/s]	Servo motor specifications	
		Horizontal	Vertical		Rated torque (Nm)	Rated speed (Rpm)
LEJS(H)40N□H□	200 to 1200	15	3	1800	0,32	3000
LEJS(H)40N□A□		30	5	1200		
LEJS(H)40N□B□		55	10	600		
LEJS(H)63N□H□	300 to 1500	30	6	1800	0,64	3000
LEJS(H)63N□A□		45	10	1200		
LEJS(H)63N□B□		85	20	600		

Servo Drive System	Servo motor for drive system	SMC motor flange
V90	1FL6024	NZ
S210	1FK2102-1	NZ
S120	1FK7015	NX
V90	1FL6032	NZ
S210	1FK2□03-2	NZ
S120	1FK7022	NX

# Electric Actuator Rod Type

## LEY Series Ball screw

LEY



### YOUR EVERYDAY TRANSFER OR FORCE SOLUTION

- Standard auto-switches can be mounted
- Mounting flexibility: three position for direct mounting and three types of mounting brackets, plus rod end brackets
- Motor position optional next or in line (D) with the actuator (included in part number)
- Positioning repeatability:  $\pm 0,02\text{mm}$  (standard) ( $\pm 0,01\text{mm}$  with H-option)

Series	Stroke [mm]	Workload [kg]		Pushing force [N]	Max. Speed [mm/s]	Servo motor specifications		Servo Drive System	Servo motor for drive system	SMC motor flange
		Horizontal	Vertical			Rated torque (Nm)	Rated speed (Rpm)			
LEY(H)25□N□A-□□□□	30 to 400	18	8	65 to 131	900	0,32	3000	V90	1FL6024	NZ
LEY(H)25□N□B-□□□□		50	16	127 to 255	450					
LEY(H)25□N□C-□□□□			30	242 to 485	225					
LEY(H)32□N□A-□□□□	30 to 500	30	9	79 to 157	1000	0,64	3000	V90	1FL6032	NZ
LEY(H)32□N□B-□□□□		60	19	154 to 308	600					
LEY(H)32□N□C-□□□□			37	294 to 588	300					
LEY(H)32DN□A-□□□□	30 to 500	30	12	98 to 197	1200	0,64	3000	V90	1FL6032	NZ
LEY(H)32DN□B-□□□□		60	24	192 to 385	500					
LEY(H)32DN□C-□□□□			46	368 to 736	250					
LEY(H)63□N□A-□□□□	100 to 800	40	19	156 to 521	1000	1,3	3000	V90	1FL6034	NZ
LEY(H)63□N□B-□□□□		70	38	304 to 1012	500					
LEY(H)63□N□C-□□□□		80	72	573 to 1910	250					
LEY(H)63□NZL-□□□□		200	115	1003 to 3343	70					
LEY(H)63DNZA-□□□-X765	100 to 800	80	37	293 to 879	1000	2,4	3000	V90	1FL6042-2	NZ
LEY(H)63DNZB-□□□-X765		150	72	569 to 1708	500					
LEY(H)63DNZC-□□□-X765		240	115	1074 to 3223	250					
								S120	not possible	

\*In-line mounting only (D)

## LEY Series Ball screw

LEYG



## Integrated guide rod actuator

### LATERAL LOAD RESISTANCE AND HIGH NON-ROTATING ACCURACY

- Slide bearing: suitable for lateral load applications such a stoppers
- Ball bushing bearing: suitable for pusher and lifter positioning

Series	Stroke [mm]	Workload [kg]		Pushing force [N]	Max. Speed [mm/s]	Servo motor specifications		Servo Drive System	Servo motor for drive system	SMC motor flange
		Horizontal	Vertical			Rated torque (Nm)	Rated speed (Rpm)			
LEY(H)G25□□N□A-□□	30 to 300	18	7	65 to 131	900	0,32	3000	V90	1FL6024	NZ
LEY(H)G25□□N□B-□□		50	15	127 to 255	450					
LEY(H)G25□□N□C-□□			29	242 to 485	225					
LEY(H)G32□□N□A-□□	30 to 300	30	10	98 to 197	1000	0,64	3000	V90	1FL6032	NZ
LEY(H)G32□□N□B-□□		60	22	192 to 385	500					
LEY(H)G32□□N□C-□□			44	368 to 736	250					
								S120*	1FK7022	NX

\*In-line mounting only (D)



Please check our website

## 24Vdc Stepper Motor Actuators with encoder



Electric Gripper  
Series LEH



Electric Slide  
Table  
Series LES



Electric Actuator/  
Rod Type  
Series LEY



Electric Actuator/  
Slider Type  
Series LEF



Connect all SMC actuators  
easily with our Profinet  
interface JXCP1



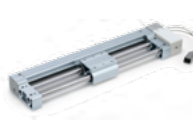
Electric Actuator/  
Rotary Type  
Series LER



Electric Actuator/  
Miniature  
Series LEP



Electric Actuator/  
Slider Type, Low  
Profile, Series LEM



Electric Actuator/  
Guide Rod Slider,  
Series LEL



Please check  
our website

## Communication Protocols with SMC controllers



Programless type  
Series LECP 1/2  
I/O input type  
Series LECP6



JXC91

EtherNet/IP



JXCE1

EtherCAT



JXCP1

PROFINET



JXCD1

DeviceNet



JXCL1

IO-Link



Expertise – Passion – Automation

### SMC Nederland BV

De Ruyterkade 120  
1011 AB Amsterdam  
T 020-531 88 88  
info@smc.nl  
www.smc.nl