



Expertise – Passion – Automation



Safety first with the soft start-up valve AV-A-X2004

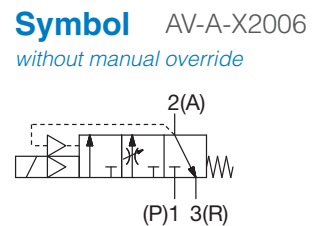
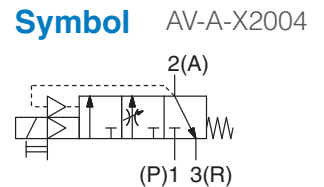
for soft starting and safe venting

SMC is the world's leading manufacturer of pneumatic and electrical automation technology.

The development of first-class quality, innovative products that offer outstanding performance, and at the same time the best safety for the user, has always been our top priority. Our technical expertise helps you to implement Machinery Directive 2006/42/EC in practice and to design your plants with increased safety from an economic point of view.

For safety-related controls according to ISO 13849

- ▶ Realisation of the safety sub-functions
Safe De-energization and Prevention of unexpected start-up
- ▶ Non-locking push type manual override compliant with ISO13849-2
- ▶ Also available with the option without manual override (AV-A-X2006)
- ▶ Modular connection for the modular F.R.L. unit port
- ▶ SISTEMA Library available



How to Order

AV **30** **00** - ****** - **1** **D** - -

A-X2004
Non-detenting direct manual override
A-X2006
Without direct manual override

Symbol	Thread type
-	RC
F	G
N	NPT

Symbol	Port size
02	1/4
03	3/8
04	1/2
06	3/4
10	1

Symbol	Options
B	With bracket
G	Design with round pressure gauge
S	Silencer (built-in)

Symbol	Coil rated voltage
1	AC100V
2	AC200V
3	AC110V (AC115V)
4	AC220V (AC230V)
5	DC24V
6	DC12V

Symbol	Size of assembly
20	1/4
30	3/8
40	1/2
50	3/4-1

Symbol	Semi-standard
-	-
R	Flow direction from right to left
Z	Unit Index plate: psi pressure gauge: MPa, psi

Symbol	Indicator light / surge voltage suppressor
-	-
Z	With indicator light and surge voltage suppressor

Symbol	Electrical entry direction
D	D type (DIN terminal with connector)
Y	Y type (DIN terminal with connector)
DO	D type (DIN terminal without connector)
YO	Y type (DIN terminal without connector)

If you specify more than one option, please list them numerically and then search for the available combinations of specifications in alphabetical order.

Note) These part numbers are regularly available on stock:
 AV2000-F02S-5Y0-A-X2004
 AV3000-F03S-5Y0-A-X2004
 AV4000-F04S-5Y0-A-X2004
 AV5000-F10S-5Y0-A-X2004

Technical features

Series	AV2000-A-X2004	AV3000-A-X2004	AV4000-A-X2004	AV5000-A-X2004	
Port size	1(P), 2(A) 3(R)	1/4	3/8	1/2	3/4 1
Pressure gauge port size	1/4	3/8	1/2	3/4	
Medium	Compressed air				
Ambient and medium temperature	0 to 50 °C*1				
Test pressure	1.5 MPa				
Operating pressure range	0.2 to 1.0 MPa				
Weight [kg]	0.43	0.45	0.80	1.30	1.25
Protection class	Dust proof (DIN terminal: IP65*2)				

*1 To avoid freezing at low temperatures, the product should be operated with dry compressed air.

*2 According to IEC60529

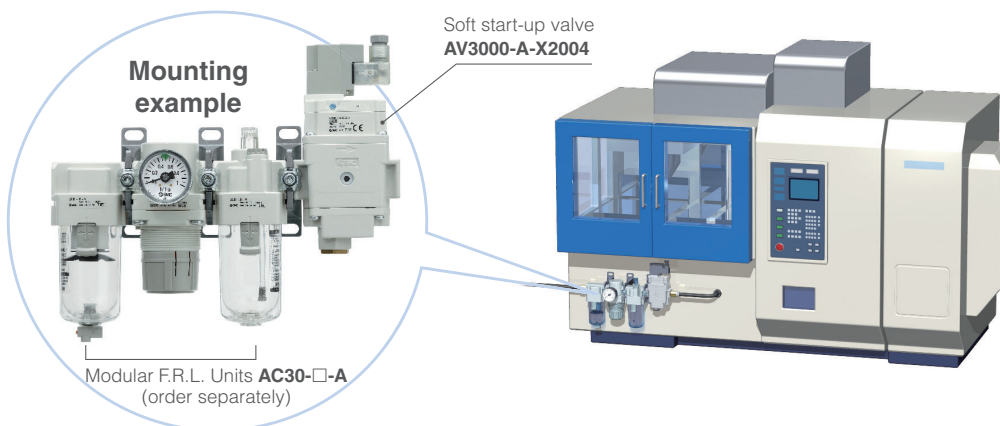
Technical features solenoid coil

Electrical entry direction		Grommet	DIN terminal	
Rated coil voltage [V]	DC	24, 12 V		
	AC	—	100, 200, 110 [115], 220 [230]*1	
Allowable voltage fluctuation	DC	24 V	±10% of the rated voltage	
		12 V	±10% of the rated voltage	
	AC	100 V	—	±10% of the rated voltage
		110 V*1 [115 V]	—	±10% of the rated voltage [-15% to +5% of the rated voltage]
		200 V	—	±10% of the rated voltage
		220 V*1 [230 V]	—	±10% of the rated voltage [-15% to +5% of the rated voltage]
Current consumption [W]	DC	0.35 (with indicator light: 0.4)	0.35 (with indicator light: 0.45)	
Apparent power [VA]	AC	100 V	—	0.78 (with indicator light: 0.87)
		110 V [115 V]	—	0.86 (with indicator light: 0.97) [0.94 (with indicator light: 1.07)]
		200 V	—	1.15 (with indicator light: 1.30)
		220 V [230 V]	—	1.27 (with indicator light: 1.46) [1.39 (with indicator light: 1.60)]
Indicator light	LED		LED (neon bulbs for AC)	

*1 110 VAC type also applicable to 115 VAC. 220 VAC type also applicable to 230 VAC.

Applications

For slow pressure buildup during the initial operation or safe single-channel venting after shutting down the plant.



Related products



**Modular F.R.L. Units
filter – regulator –
lubricator**
Series AC-B



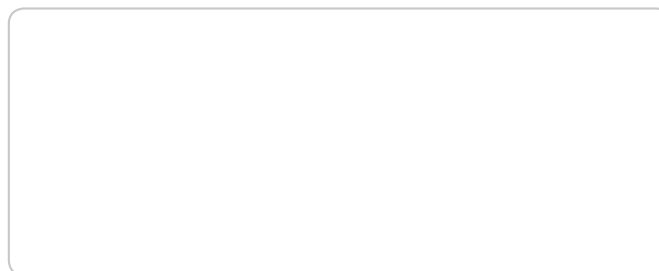
**3/2-port manually
operated shut-off valve**
Series VHS20/30/40/50



Expertise – Passion – Automation

SMC Corporation

Akihabara UDX 15F, 4-14-1
Sotokanda, Chiyoda-ku, Tokyo 101-0021, JAPAN
Phone: 03-5207-8249
Fax: 03-5298-5362



Austria	+43 (0)2262622800	www.smc.at	office@smc.at	Lithuania	+370 5 2308118	www.smclt.lt	info@smclt.lt
Belgium	+32 (0)33551464	www.smc.be	info@smc.be	Netherlands	+31 (0)205318888	www.smc.nl	info@smc.nl
Bulgaria	+359 (0)2807670	www.smc.bg	office@smc.bg	Norway	+47 67129020	www.smc-norge.no	post@smc-norge.no
Croatia	+385 (0)13707288	www.smc.hr	office@smc.hr	Poland	+48 222119600	www.smc.pl	office@smc.pl
Czech Republic	+420 541424611	www.smc.cz	office@smc.cz	Portugal	+351 214724500	www.smc.eu	apoioclientept@smc.smces.es
Denmark	+45 70252900	www.smc.dk	smc@smcdk.com	Romania	+40 213205111	www.smcromania.ro	smcromania@smcromania.ro
Estonia	+372 6510370	www.smc.ee	smc@smcpneumatics.ee	Russia	+7 8123036600	www.smc.eu	sales@smcru.com
Finland	+358 207513513	www.smc.fi	smc@smc.fi	Slovakia	+421 (0)413213212	www.smc.sk	office@smc.sk
France	+33 (0)164761000	www.smc-france.fr	info@smc-france.fr	Slovenia	+386 (0)73885412	www.smc.si	office@smc.si
Germany	+49 (0)61034020	www.smc.de	info@smc.de	Spain	+34 945184100	www.smc.eu	post@smc.smces.es
Greece	+30 210 2717265	www.smchellas.gr	sales@smchellas.gr	Sweden	+46 (0)86031200	www.smc.nu	smc@smc.nu
Hungary	+36 23513000	www.smc.hu	office@smc.hu	Switzerland	+41 (0)523963131	www.smc.ch	info@smc.ch
Ireland	+353 (0)14039000	www.smcautomation.ie	sales@smcautomation.ie	Turkey	+90 212 489 0 440	www.smcpnomatik.com.tr	info@smcpcnomatik.com.tr
Italy	+39 0292711	www.smcitalia.it	mailbox@smcitalia.it	UK	+44 (0)845 121 5122	www.smc.uk	sales@smc.uk
Latvia	+371 67817700	www.smc.lv	info@smc.lv				