

Maintenance Procedure

Product name: **Ionizer**

Representative model no.: **IZS31**

Description: **Cleaning kit**

Introduction

■ Explanatory of symbols

Be sure to read the statement following each symbol attached on the important part in this manual.



Caution

Operator error could result in injury and equipment damage.

Note

The precaution for an operation which tends to be performed incorrectly

Maintenance of electrode needle

When IZS series has been used for a long period, an electrode needle gets contaminated due to attachment of dust, etc. If it keeps operated with dust attached, the charge elimination capability might be impaired and an accident and failure could result. Therefore, cleaning at regular basis is recommended.

* For maintenance of the electrode needle, use a specific cleaning kit (IZS30-M2).



Caution

- Turn off the power supply of IZS series before maintenance work.

- Do not touch directly the electrode needle. Otherwise injury could result.
Pay attention for this point during maintenance.

■ Check of packaging including

Check including of the package before using.



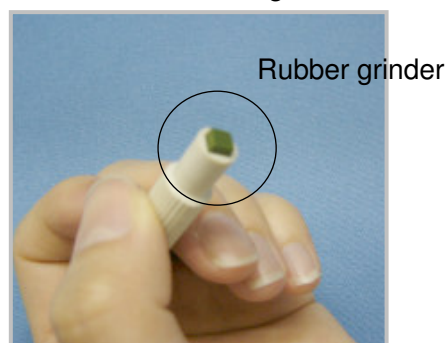
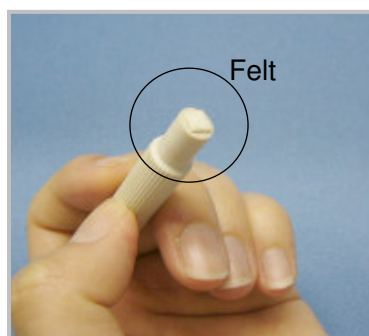
Cleaning kit (IZS30-M2)



Spare felt 2pcs

■ Cleaning of the electrode needle

A cleaning kit includes a felt and rubber grinder. It is recommended to select either of them depending on how much the needle gets dirty for more effective cleaning.



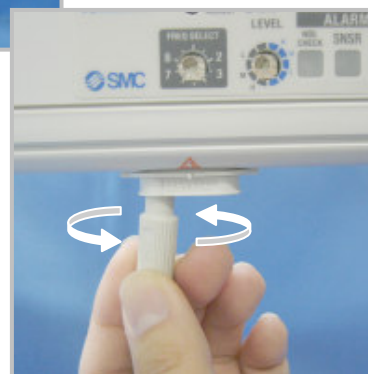
<Little dirt>

Use a felt. Soak the felt into alcohol, insert it into the electrode needle and rotate a few turns. The felt removes dirt from the needle.

* Use reagent ethanol class 1 99.5vol% or greater for alcohol.

Note

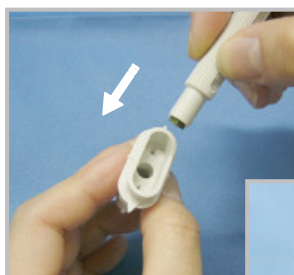
If this work is difficult, the electrode cartridge can be removed from the body first.

**<Severe dirt>**

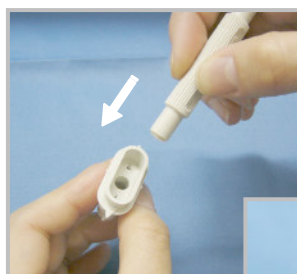
Remove the electrode cartridge from the body.

1. Use a rubber grinder and remove dirt. Insert the rubber grinder into the electrode needle and rotate it a few turns. (Adjust the number of turn depending on the degree of dirt.)

2. Finish cleaning with a felt. Soak the felt into alcohol, insert it to the electrode needle and rotate a few turns.

**Note**

Do not use the rubber grinder for cleaning of the electrode needle made of silicone. It might damage the needle.



<Cleaning with a cotton bud>

If the cleaning kit is not at hand, a cotton bud can be soaked into alcohol and used for cleaning. Remove dirt with the bud soaked into alcohol.



■ Replacement with a new felt / rubber grinder

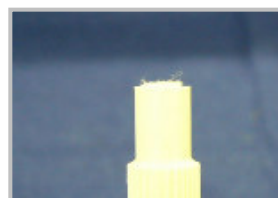
A spare felt provided with the cleaning kit and separately ordered felt (IZS30-A0201) and rubber grinder (IZS30-A0202) can be mounted as follows.

1. Remove the felt and rubber grinder mounted.
2. Insert a new felt and rubber grinder into a holder. Mind the direction for inserting the felt and rubber grinder. (They have a rectangular shape.)

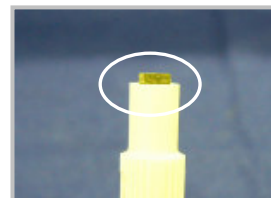


Note

Insert the felt to the end face of the holder for replacement. If it reaches firmly, it should come out from the end face of the holder by 1mm. Do not insert too deeply.



Felt



Rubber grinder

Note

The degree of dirt on the felt and rubber grinder depends on the operating environment and maintenance period. If dirt can't be removed easily even by changing the position of the felt and rubber grinder, replace them with those new in accordance with "Replacement with a new felt / rubber grinder". As an option for replacement, IZS30-A0201(felt 10pcs)/IZS30-A0202(rubber grinder 1pc) can be ordered separately.



IZS30-A0201
Spare felt
10 pcs



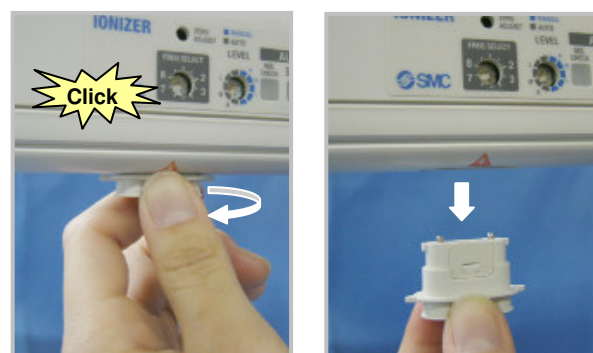
IZS30-A0202
Spare rubber grinder
1 pcs

■ Replacement of electrode cartridge

If the charge elimination capability is not recovered though the electrode needle is cleaned, the life of the electrode needle should be considered. Replace the electrode needle cartridge. There are three types of the electrode needle, which are tungsten needle (IZS31-NT), silicone needle (IZS31-NC) and stainless steel needle (IZS31-NS). All electrode cartridge need to be replaced at once.

■ Removal of electrode cartridge

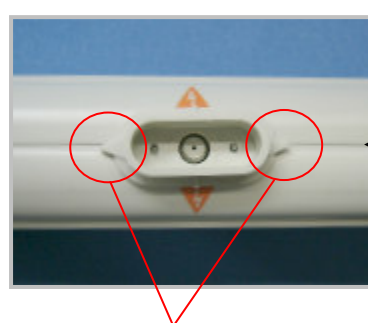
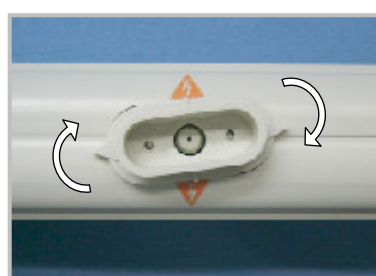
1. Twist the electrode cartridge until it clicks.
3. Pull out the electrode cartridge from the ionizer.



■ Mounting of electrode cartridge

Insert the electrode cartridge to the ionizer and twist it in opposite direction to mounting until it clicks again.

Check the electrode cartridge mounting check line at the bottom of the ionizer body matches the triangle mark on the electrode cartridge.



← Mounting check line

Check for matching

■ Adjustment of ion balance

When cleaning the electrode needle and replacing the electrode cartridge, it is recommended to perform ion balance adjustment after those works are finished.