



Operation Manual

PRODUCT NAME

Controller setting kit
install manual (bundled with CD-ROM)

MODEL/ Series

LEC-W2

SMC Corporation

LEC-W2 procedure for installing driver and software

0. Preparation

Prepare the following before using the ACT Controller software.

0.1 Personal computer

This software can be used on a PC operated with Microsoft® Windows® XP 32bit and Windows® 7 32bit or 64bit.

0.2 USB cable

Please prepare the communication unit, the communications cable, and the USB cable (A-mini B type)

1. Installation

1.1 Installation of communication unit's driver

When the communication unit is connected to the USB port of the PC.

<Windows XP> The following screens are displayed.

<Windows 7> Open the "Control Panel"—"Hardware and Sound". Push the "Device Manager" button in the screen. Right-click on "SMC Serial Converter" displayed in "Other devices" and select the [Update Driver Software...].

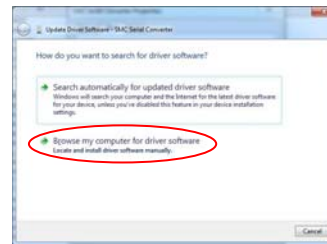
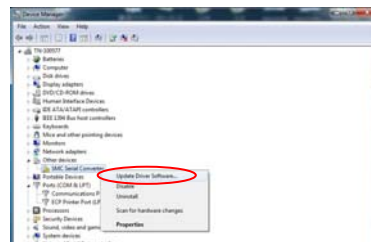
(1) Please insert CD-ROM

(2) <Windows XP> Select [Install from a list or specific location (Advanced)] and push the [Next >] button.

<Windows 7> Push the [Browse my computer for driver software] button.



Windows XP



Windows 7

(3) The following screen will be displayed.

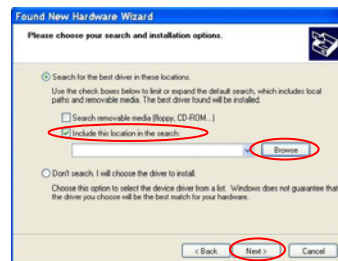
<Windows XP> Click [Include this location in the search].

<Windows 7> Click [Include subfolders].

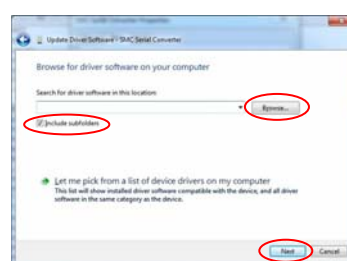
Select the folder in CD-ROM by pushing [Browse] button. The folder location is followings.

OS	Folder location
Windows XP (32bit)	\Drivers\32bit
Windows 7 (32bit)	\Drivers\32bit
Windows 7 (64bit)	\Drivers\64bit

And then push the [Next >] button.

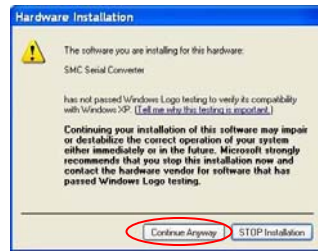


Windows XP



Windows 7

- (4) When the search is complete the following screen will be displayed.
 <Windows XP> Push the [Continue anyway] button to continue.
 <Windows 7> Push the [Install this driver software anyway] button to continue.



Windows XP

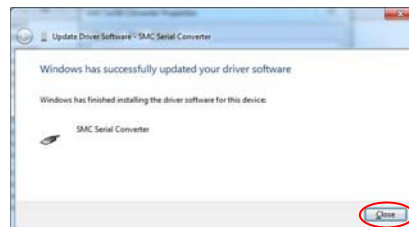


Windows 7

- (5) When installation of the driver is completed, the following screen will be displayed.
 <Windows XP> Pushing the [Finish] button.
 <Windows 7> Pushing the [Close] button.



Windows XP



Windows 7

- (6) The installation of the USB driver is now complete.
 Next is the installation of the virtual COM port.
 Install the virtual COM port driver using the same procedure.

1.2 Installation of software

Select the \ACT Controller\EN(VER1200)\Setup.exe in CD-ROM.

To install the software follow the on screen instructions.

When the installation is completed the "ACT Controller Menu" is displayed as an icon.

To start software click this icon.

Important: Check "Confirmation the communication port" before starting software

2. Confirmation of communication port

The communication port number is needed to set up communication setting between PC and LEC by the ACT Controller Software.

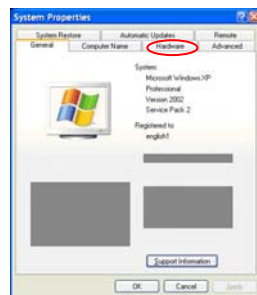
The communication port number is automatically allocated for the communication unit by Windows.

It is necessary to confirm the communication port number (COM number).

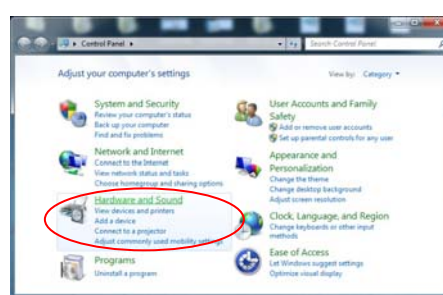
This number can be confirmed by the Windows device manager.

- (1) <Windows XP> Open the "Control panel"—"System" in the start menu. Select "Hardware" tab in the upper part of the screen.

<Windows 7> Open the "Control panel". Select "Hardware and Sound".

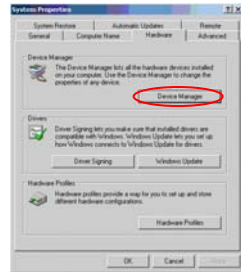


Windows XP

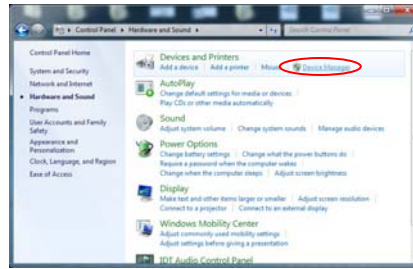


Windows 7

- (2) Push the [Device manager] button in the upper part of the screen.

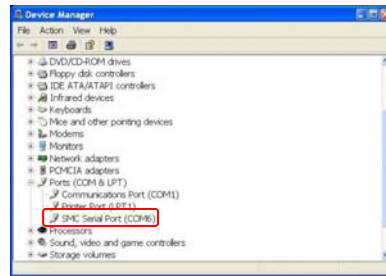


Windows XP

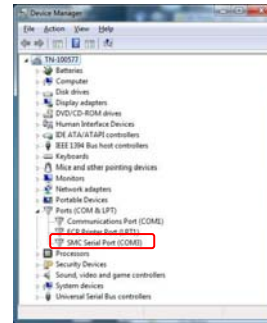


Windows 7

- (3) Check the COM port number allocated to "SMC serial Port (COM*)" displayed in "Ports (COM and LPT)". In Windows XP example, it is COM6.



Windows XP



Windows 7

The COM port number is changed depending on the USB port that is connected to the communication unit. If the USB port connected to the communication unit is changed, the COM port number for the communication setting should also be changed.

3. Start menu

The "ACT Controller Menu" icon is displayed on the PC desktop after the software is installed. The following menu is displayed when this icon is double clicked. Select "Normal mode" or "Easy mode"



4. Communication setting

When the software is started up in either "Normal mode" or "Easy mode", the software recognizes the connected controller automatically. (Communication setting is necessary for this to happen)

Please check the following points before starting communication.
The controller that is being used for communication is switched on.
The controller and the personal computer are connected through the communication unit.

< Normal mode >

The following window is displayed when "Action" - "System" - "Setting" is selected from the menu bar.

Set the COM port number as confirmed by the "2. Confirmation of the communication port" in the row named "Port No."

Maximum number of axis	Confirmed number of axes used.
COM port	COM port number of communication unit
Communication rate	The communication rate to the controller is specified. * The default value of LEC series is 38400 bps.

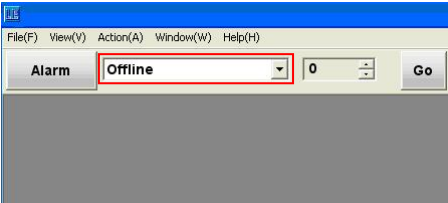
Comm Setting

Item	Unit	Remark
Max ID		4 1 - 32
Port No.	COM4	1 - 20
Comm Sp 1	Disable	9600bps
Comm Sp 2	Disable	19200bps
Comm Sp 3	Enable	38400bps
Comm Sp 4	Disable	57600bps
Comm Sp 5	Disable	115200bps

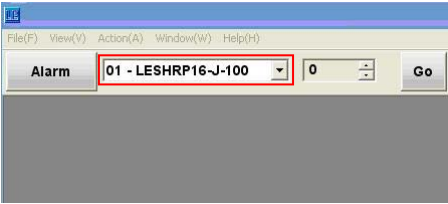
OK Cancel

After setting up the communication, select "Action" - "System" - "Reset".
The software will then search for the connected controller and PC.

If, at start up in "Normal mode" the "Offline" is displayed in the part of the screen shown in the figure below, the controller is not recognized.
Check the power supply etc. to the communication port setting, wiring, and the controller.



If the controller is connected correctly, "01-****" is displayed instead of "Offline" as shown in the figure below.



< Easy mode >

If communication is not possible, the communication-setting screen is displayed.
The communication setting/connection should be completed as per section 4.
Operation is now allowed.

5. Explanation of the function of each mode

Refer to the "ACT Controller Help" for explanation of the function of each mode.
The "ACT Controller Help" is displayed by selecting the "ACT Controller" - "ACT Controller Help" in the program menu or via the icon on the PC desktop.

Notes:

Do not turn off the power supply to the communicating controller, or disconnect the cable when the setting software (ACT Controller) is running.

Communication is continuous while software is running.

If the cable is pulled out while communicating, it causes malfunction of the software.