

3 Installation (continued)

3.3 Mounting

Warning

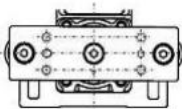
- Observe the required tightening torque for screws. Unless stated otherwise, tighten the screws to the recommended torque for mounting the product.
- Do not make any alterations to the product. Alterations made to this product may lead to a loss of durability and damage to the product, which can lead to injury and damage to other equipment and machinery. Do not scratch or dent the sliding parts of the table or mounting face etc., by striking or holding them with other objects. The components are manufactured to precise tolerances, so that even a slight deformation may cause faulty operation or seizure.
- Do not use the product until it has been verified that the equipment can be operated correctly. After mounting or repair, connect the power supply to the product and perform appropriate functional inspections to check it is mounted correctly.
- Do not use the product until it has been verified that the equipment can be operated correctly. After mounting or repair, connect the power supply to the product and perform appropriate functional inspections to check it is mounted correctly.
- Allow sufficient space for maintenance and inspection.

Caution

- When mounting the product, use screws with adequate length and tighten them to the recommended torque. Tightening with larger torque than the specified range may cause malfunction while the tightening with smaller torque can allow the displacement of actuator position. In extreme conditions the actuator could become detached from its mounting position.

Work fixed/Plate tapped type

Model	Screw	Max. tightening torque [Nm]	Max. thread length [mm]
LEYG16	M5 x 0.8	3.0	8
LEYG25	M6 x 1.0	5.2	11
LEYG32	M6 x 1.0	5.2	12
LEYG40	M6 x 1.0	5.2	12

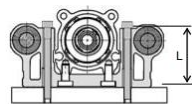


Tighten the product mounting screws to the specified torque.

Tightening to a torque over the specified range can cause operation failure, and insufficient torque can cause displacing or dropping of the attachment.

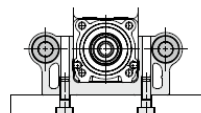
Body fixed / Top mounting

Model	Screw	Max. tightening torque [Nm]	Max. thread depth [mm]
LEYG16	M4 x 0.7	1.5	32
LEYG25	M5 x 0.8	3.0	40.3
LEYG32	M5 x 0.8	3.0	50.3
LEYG40	M5 x 0.8	3.0	50.3



Body fixed / Bottom mounting

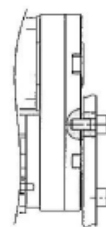
Model	Screw	Max. tightening torque [Nm]	Max. thread depth [mm]
LEYG16	M5 x 0.8	3.0	10
LEYG25	M6 x 1.0	5.2	12
LEYG32	M6 x 1.0	5.2	12
LEYG40	M6 x 1.0	5.2	12



3 Installation (continued)

Mounting / Head side tapped style

Model	Screw	Max. tightening torque [Nm]	Max. thread depth [mm]
LEYG16	M4 x 0.7	1.5	7
LEYG25	M5 x 0.8	3.0	8
LEYG32	M6 x 1.0	5.2	10
LEYG40	M6 x 1.0	5.2	10



3.4 Lubrication

Caution

- SMC products have been lubricated for life at manufacture, and do not require lubrication in service.
- If a lubricant is used in the system, refer to catalogue for details.
- The recommended grease is lithium grade No.2

Applied Region	Grease Pack Number	Weight [g]
Piston rod Guide	GR-S-010	10
	GR-S-020	20

- For products which include a "25A-" prefix the recommended grease is low condensation grease.

Applied Region	Grease Pack Number	Weight [g]
Piston rod Guide	GR-D-010	10

3.5 Wiring

Warning

- Adjustment, mounting or wiring changes should not be carried out before disconnecting the power supply to the product. Electric shock, malfunction and damage can result.
- Do not disassemble the cables.
- Use only specified cables, otherwise there is a risk of fire or damage.

- Do not connect or disconnect the wires, cables and connectors when the power is turned on.

Caution

- Wire the connector correctly and securely. Check the connector for polarity and do not apply any voltage to the terminals other than those specified in the Operation Manual.
- Take appropriate measures against noise. Noise in a signal line may cause malfunction. As a countermeasure separate the high voltage and low voltage cables, and shorten the wiring lengths, etc.
- Do not route input/output wires and cables together with power or high voltage cables. The product can malfunction due to noise interference and surge voltage from power and high voltage cables close to the signal line. Route the wires of the product separately from power or high voltage cables.
- Take care that actuator movement does not catch cables.
- Operate with all wires and cables secured.
- Avoid bending cables at sharp angles where they enter the product.
- Avoid twisting, folding, rotating or applying an external force to the cable. Risk of electric shock, wire breakage, contact failure and loss of control of the product can result. Select "Robotic cables" in applications where cables are moving repeatedly (encoder/ motor/ lock). Refer to the relevant operation manual for the bending life of the cable.
- Confirm correct insulation. Poor insulation of wires, cables, connectors, terminals etc. can cause interference with other circuits. Also there is the possibility that excessive voltage or current may be applied to the product causing damage.
- Refer to the auto switch references in "Best Pneumatics" when an auto switch is to be used

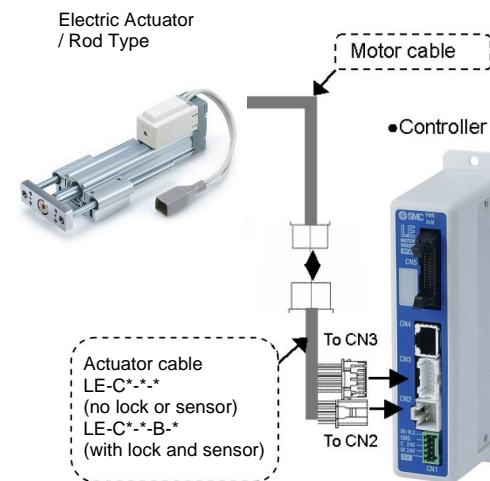
3 Installation (continued)

3.6 Actuator Ground connection

Caution

- The Actuator must be connected to ground to shield the actuator from electrical noise. The screw and cable with crimping terminal and toothed washer should be prepared separately by the user.

3.7 Wiring of Actuator to Controller



4 How to Order

- For standard products, refer to the catalogue on the SMC website (URL: <https://www.smcworld.com>) for the how to order information.

5 Outline Dimensions

- For standard products, refer to the catalogue on the SMC website (URL: <https://www.smcworld.com>) for outline dimensions.

6 Maintenance

6.1 General Maintenance

Caution

- Not following proper maintenance procedures could cause the product to malfunction and lead to equipment damage.
- If handled improperly electricity and compressed air can be dangerous.
- Maintenance of electromechanical and pneumatic systems should be performed only by qualified personnel.
- Before performing maintenance, turn off the power supply and be sure to cut off the supply pressure. Confirm that the power has been discharged and the air is released to atmosphere.
- After installation and maintenance, apply operating pressure and power to the equipment and perform appropriate functional and leakage tests to make sure the equipment is installed correctly.
- If any electrical or pneumatic connections are disturbed during maintenance, ensure they are reconnected correctly and safety checks are carried out as required to ensure continued compliance with applicable national regulations.
- Do not make any modification to the product.
- Do not disassemble the product, unless required by installation or maintenance instructions.
- Incorrect handling can cause an injury, damage or malfunction of the equipment and machinery, so ensure that the procedure for the task is followed.
- Always allow sufficient space around the product to complete any maintenance and inspection.

6.2 Periodical Maintenance

- Maintenance should be performed according to the table below:

*whichever of these occurs first	Appearance Check	Belt Check
Inspection before daily operation	✓	
Inspection every six months*	✓	✓
Inspection every 1,000 km*	✓	✓
Inspection every 5 million cycles*	✓	✓

6 Maintenance (continued)

- Following any maintenance, always perform a system check. Do not use the product if any error occurs, as safety cannot be assured if caused by any un-intentional malfunction.

6.1 Appearance Check

- The following items should be visually monitored to ensure that the actuator remains in good condition and there are no concerns flagged;
 - Loose Screws,
 - Abnormal level of dust or dirt,
 - Visual flaws / faults,
 - Cable connections,
 - Abnormal noises or vibrations.

6.4 Belt Check

- If one of the 6 conditions below are seen, do not continue operating the actuator, contact SMC immediately.

- Tooth shaped canvas is worn out.** Canvas fibre becomes "fuzzy", rubber is removed, and the fibre gains a white colour. The lines of fibre become very unclear.



- Peeling off or wearing of the side of the belt.** The corner of the belt becomes round and frayed, with threads beginning to stick out.

- Belt is partially cut.** Belt is partially cut. Foreign matter could be caught in the teeth and cause flaws.



- Vertical line of belt teeth.** Flaw which is made when the belt runs on the flange.

- Rubber back of the belt is softened and sticky.**
- Crack on the back of the belt.**



7 Limitations of Use

7.1 Limited warranty and disclaimer/compliance requirements

- Refer to Handling Precautions for SMC Products.

8 Product disposal

This product should not be disposed of as municipal waste. Check your local regulations and guidelines to dispose of this product correctly, in order to reduce the impact on human health and the environment.

9 Contacts

Refer to www.smcworld.com or www.smc.eu for your local distributor / importer.

SMC Corporation

URL : <http://www.smcworld.com> (Global) <http://www.smc.eu> (Europe)
 *SMC Corporation, 4-14-1, Sotokanda, Chiyoda-ku, Tokyo 101-0021, Japan
 Specifications are subject to change without prior notice from the manufacturer.
 © 2021 SMC Corporation All Rights Reserved.
 Template DKP50047-F-085M