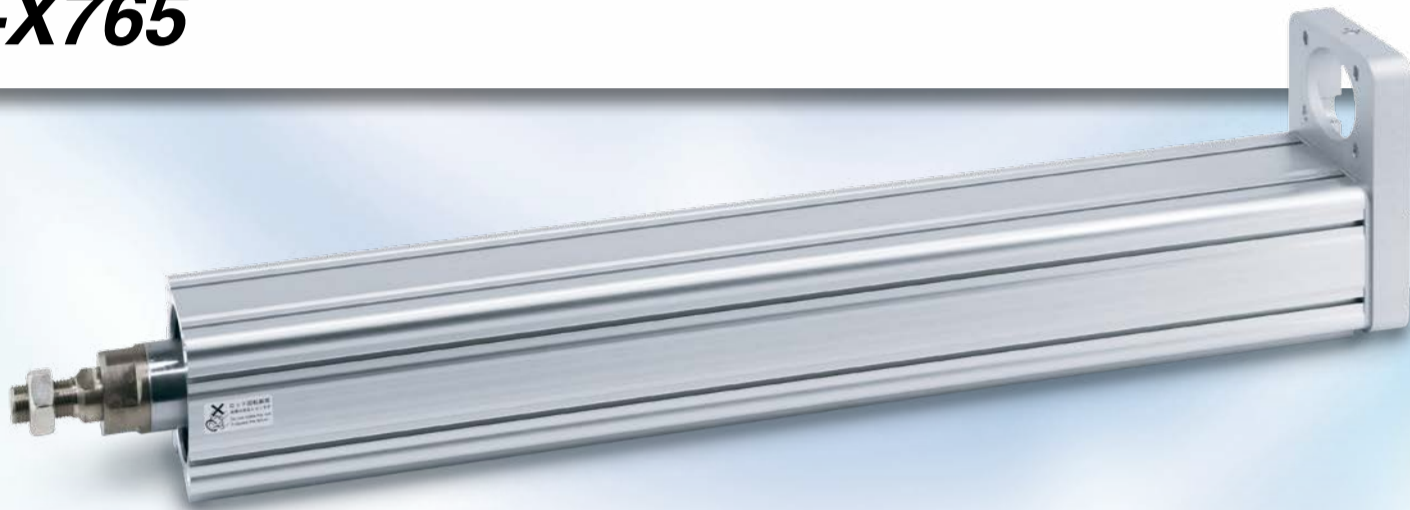


# Supports 750 W motors

## Motorless Type Motor mounting position: Top/Parallel Electric Actuator/Rod Type LEY63-X765



Scan the QR code to answer the questionnaire.



### Max. horizontal work load

**240 kg**

Increased by 3 times

### Max. vertical work load

**115 kg**

Increased by approx. 1.6 times

Model	Max. work load [kg]	
	80	240
LEY63C-X765	240 kg	
LEY63C	80 kg	

Model	Max. work load [kg]	
	72	115
LEY63C-X765	115 kg	
LEY63C	72 kg	

Lead: 5 mm, Speed: 250 mm/s

## Specifications

Model			LEY63CN-X765			
Actuator specifications	Stroke [mm]		50, 100, 150, 200, 250, 300, 350, 400, 450, 500, 600, 700, 800			
	Work load [kg]	Horizontal*1	80	150	240	
		Vertical	37	72	115	
	Force [N]*2 (Set value: Rated torque 45 to 135%)		293 to 879	569 to 1708	1074 to 3223	
	Max. speed*3 [mm/s]	Stroke range	Up to 500	1000	500	250
			505 to 600	800	400	200
			605 to 700	600	300	150
705 to 800			500	250	125	
Pushing speed [mm/s]*4		30 or less				
Ball screw specifications		Lead [mm]	20	10	5	
Reference motor specifications	Motor shape		□80			
	Motor type		AC servo motor			
	Rated output capacity [W]		750 W			
	Rated torque [N·m]		2.4			
	Rated rotation [rpm]		3000			

\*1 This is the maximum value of the horizontal work load. An external guide is necessary to support the load. The actual work load changes according to the condition of the external guide. Confirm the load using the actual device.

\*2 The force setting range for the force control (Speed control mode, Torque control mode) The force changes according to the set value.

\*3 The allowable speed changes according to the stroke.

\*4 The allowable collision speed for collision with the workpiece

## Compatible Motors

Manufacturer	Model
Mitsubishi Electric Corporation	HG-KR73(B)
Siemens AG	1FK2204-5AK□0-0