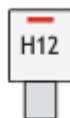


## SMC CEE Standard DIN-Connector Type A

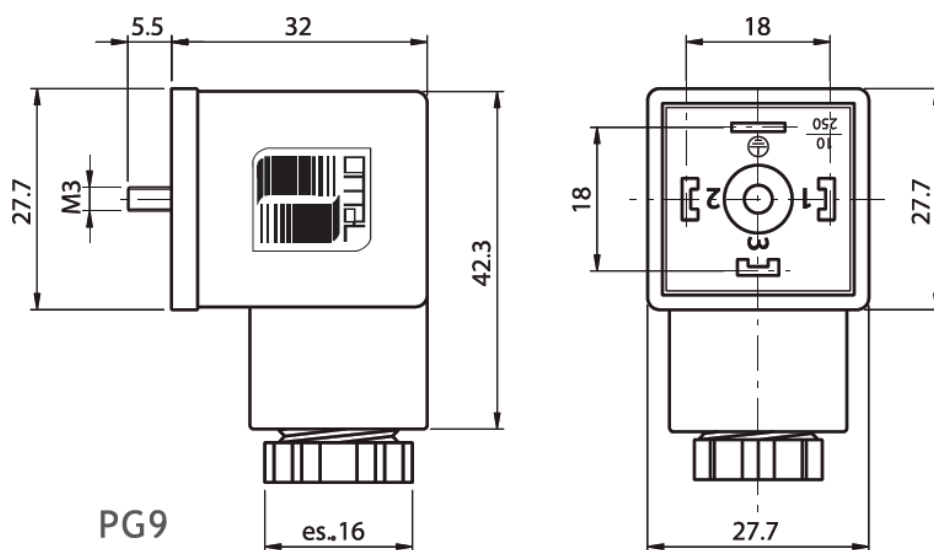
Electrical connector according to EN 175301-803

### Technical data

Material:	black: PA66 + 30%FV transparent: Insert PA66 + 30%FV, Housing Pa
Contact material:	CuZn (Ag)
Max. current:	16 A
Operating current:	10 A
Distance:	18 mm
Protection class:	IP 65 (EN 60529)
Insulation class:	C – VDE 0110
Operating temperature:	black: -40°C / +125°C transparent: -25°C / +90°C
Poles:	2P + Earth, Earth position:



Dimensions:



Gland size: PG9

Cable diameter: 6 - 8 mm

There is the possibility with (transparent housing) and without LED (black housing). It is important to know, that the maximum current depends on the wiring.

## A0

Nominal voltage: max. 250 V AC / 300V DC

Housing: black

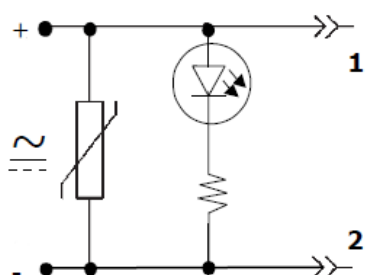
Standard without power indicator and electrical circuit

## A6-...

Nominal voltage: 12, 24, 48, 110, 250 V AC/DC

Housing: transparent

Circuit:



Bipolar red LED + Varistor protection against overvoltage

**Order code:** A6-\*V-V-R (\*voltage 12, 24, 48, 110, 250)